

WAAS CH <b>78232</b> <b>W19A</b>	APP CRS <b>190°</b>	Rwy Idg TDZE Apt Elev	<b>5010</b> <b>979</b> <b>979</b>
--	------------------------	-----------------------------	---

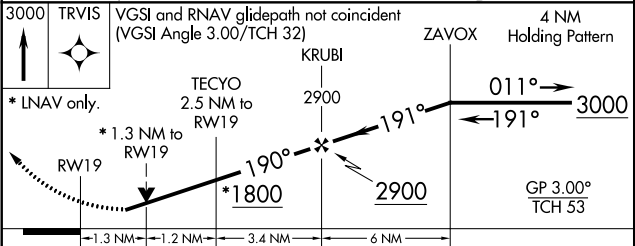
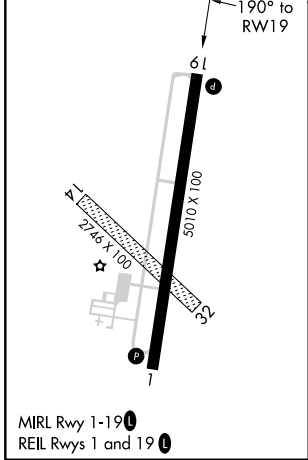
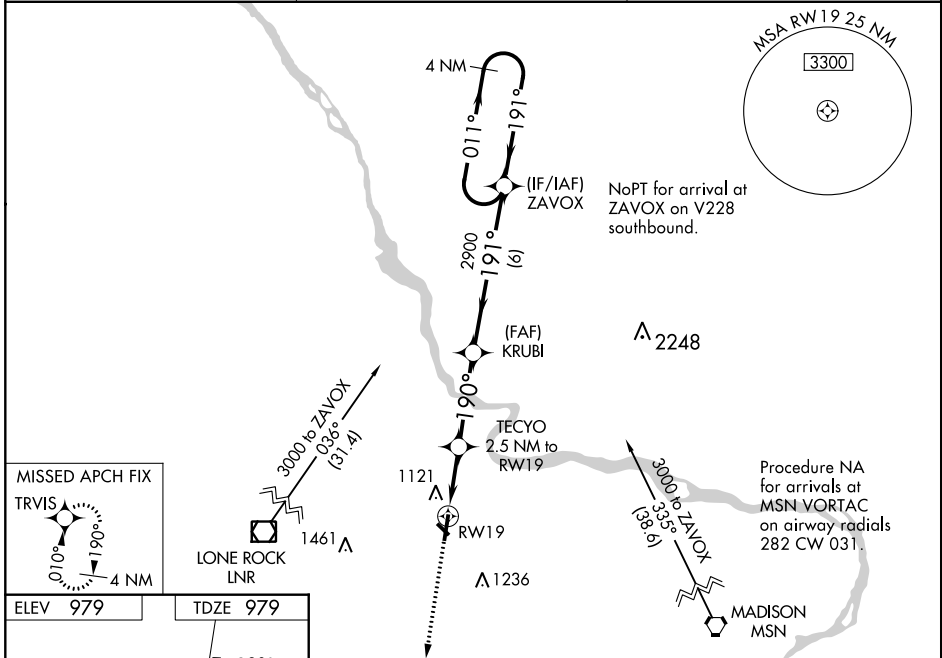
# RNAV (GPS) RWY 19

BARABOO-WISCONSIN DELLS RGNL (DLL)

**⚠** For uncompensated Baro-VNAV systems, LNAV/VNAV NA below -16°C (4°F) or above 54°C (130°F). DME/DME RNP-0.3 NA. When local altimeter setting not received, use Lone Rock altimeter setting and increase LPV DA to 1438 feet and LNAV/VNAV DA to 1399 feet, LPV visibility 3/8 mile, LNAV/VNAV visibility 1/4 mile; increase all MDA 100 feet, LNAV Cat C visibility 1/8 mile, Circling Cat C visibility 1/2 mile. Rwy 19 helicopter visibility reduction below 3/4 SM NA. VDP and Baro-VNAV NA with Lone Rock altimeter setting. Circling NA to Rwys 14 and 32.

**MISSED APPROACH:**  
Climb to 3000 direct TRVIS and hold.

AWOS-3 <b>118.325</b>	MADISON APP CON ★ <b>135.45 343.7</b>	UNICOM <b>123.05 (CTAF) 0</b>
--------------------------	--	----------------------------------



CATEGORY	A	B	C	D
LPV DA	1341-1 1/4	362 (400-1 1/4)		NA
LNAV/VNAV DA	1302-1 1/8	323 (400-1 1/8)		NA
LNAV MDA	1420-1 441 (500-1)	1420-1 3/8 441 (500-1 3/8)		NA
CIRCLING	1540-1 561 (600-1)	1560-1 1/2 581 (600-1 1/2)		NA

EC-3, 28 MAR 2019 to 25 APR 2019

EC-3, 28 MAR 2019 to 25 APR 2019