


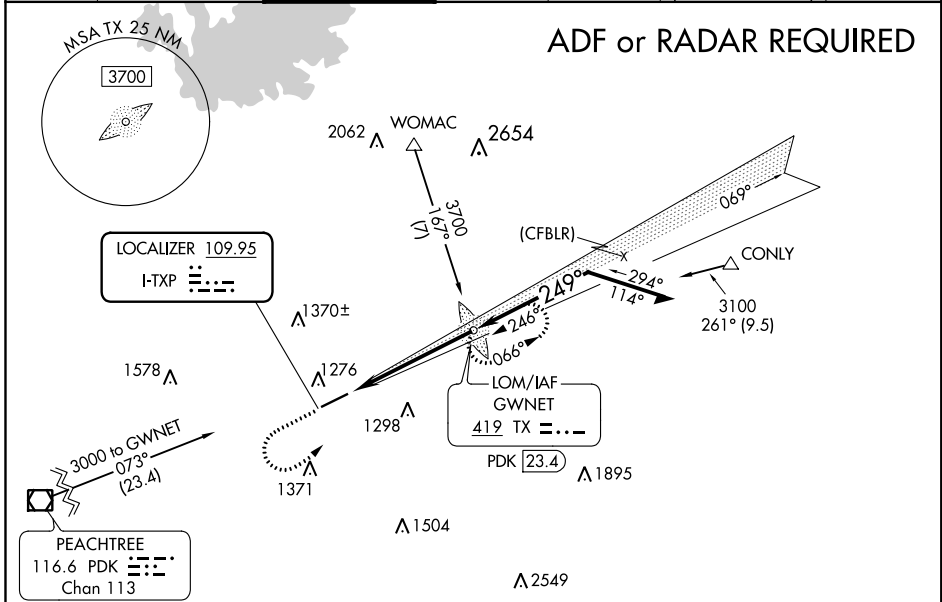
LOC I-TXP 109.95	APP CRS 249°	Rwy Idg TDZE Apt Elev	6000 1038 1062
----------------------------	------------------------	-----------------------------	---

ILS or LOC RWY 25
GWINNETT COUNTY-BRISCOE FIELD (LZU)

NA When local alimeter setting not received, use Winder alimeter setting and increase all DA 51 feet, and all MDA 60 feet, increase S-LOC 25 Cat C/D and Circling Cat C/D visibility 1/2 SM. ADF required. For inop MALSR, when using Winder alimeter setting increase S-ILS 25 all Cats visibility to 3/4 SM.

MALSR

MISSED APPROACH: Climb to 1800 then climbing left turn to 3000 direct GWNET LOM and hold.

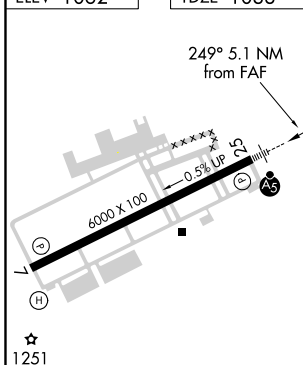
ATIS 132.275	ATLANTA APP CON 126.975 239.275	GWINNETT TOWER * 124.1 (CTAF) 1	GND CON 121.8	CLNC DEL 121.8	ATLANTA CLNC DEL 134.0 (When tower closed)	UNICOM 123.05
------------------------	---	--	-------------------------	--------------------------	---	-------------------------

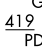



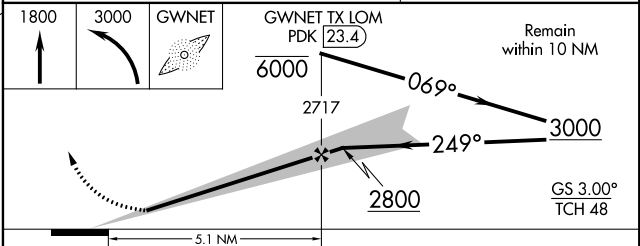
SE-4, 28 MAR 2019 to 25 APR 2019

SE-4, 28 MAR 2019 to 25 APR 2019

ELEV 1062	TDZE 1038
-----------	-----------



ALTERNATIVE MISSED APCH FIX
GWNET
419 TX  PDK 23.4




HIRL Rwy 7-25 1					
FAF to MAP 5.1 NM					
Knots	60	90	120	150	180
Min:Sec	5:06	3:24	2:33	2:02	1:42
CATEGORY	A	B	C	D	
S-ILS 25	1238-1/2		200 (200-1/2)		
S-LOC 25	1540-1/2 502 (500-1/2)		1540-1 502 (500-1)		
CIRCLING	1640-1 578 (600-1)		1640-1 1/2 578 (600-1 1/2)		1700-2 638 (700-2)