

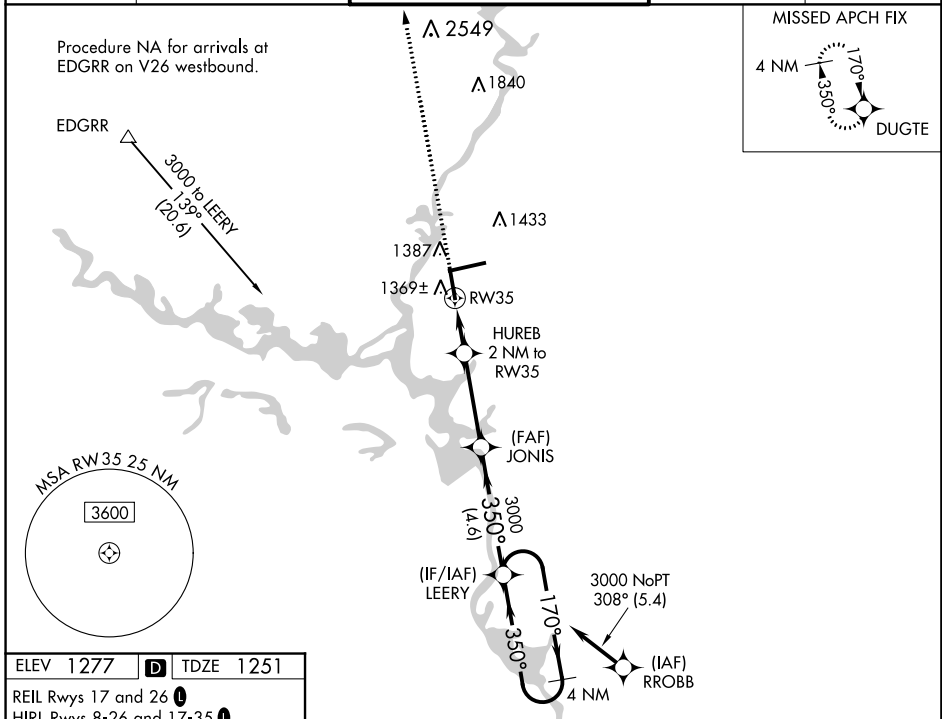
WAAS CH 93521 W35A	APP CRS 350°	Rwy Idg TDZE Apt Elev	6498 1251 1277
--	------------------------	-----------------------------	---

RNAV (GPS) RWY 35

CENTRAL WISCONSIN (CWA)

For uncompensated Baro-VNAV systems, LNAV/VNAV NA below -17°C (2°F) or above 54°C (130°F). DME/DME RNP-0.3 NA.		MISSED APPROACH: Climb to 3600 direct DUGTE and hold.

ATIS 127.45	MINNEAPOLIS CENTER 124.4 317.7	CWA TOWER* 119.75 (CTAF) 0 360.7	GND CON 121.9 360.7	UNICOM 122.95
-----------------------	--	--	-------------------------------	-------------------------

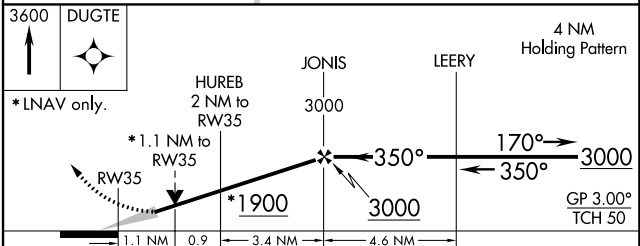
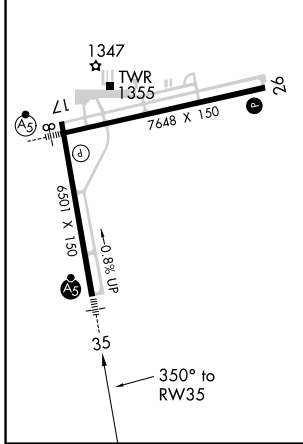


EC-3, 28 MAR 2019 to 25 APR 2019

EC-3, 28 MAR 2019 to 25 APR 2019

ELEV 1277	D	TDZE 1251
------------------	----------	------------------

REIL Rwy 17 and 26
HIRL Rwy 8-26 and 17-35



CATEGORY	A	B	C	D
LPV DA		1451- ¹ / ₂	200 (200- ¹ / ₂)	
LNAV/VNAV DA		1576- ³ / ₄	325 (300- ³ / ₄)	
LNAV MDA	1620- ¹ / ₂	369 (400- ¹ / ₂)	1620- ⁵ / ₈	369 (400- ⁵ / ₈)
CIRCLING	1740-1	463 (500-1)	1740- ¹ / ₂ 463 (500- ¹ / ₂)	1840-2 563 (600-2)