

NDB DYQ	APP CRS	Rwy Idg	6300
263	054°	TDZE	1608
		Apt Elev	1608

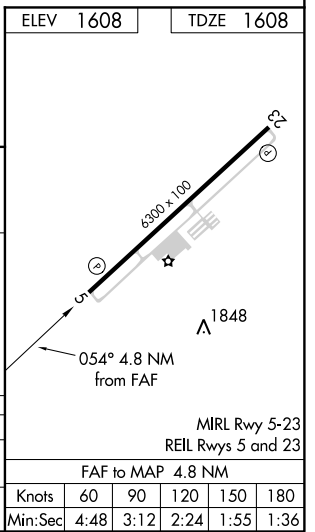
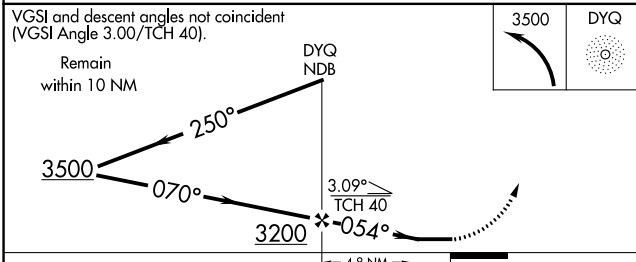
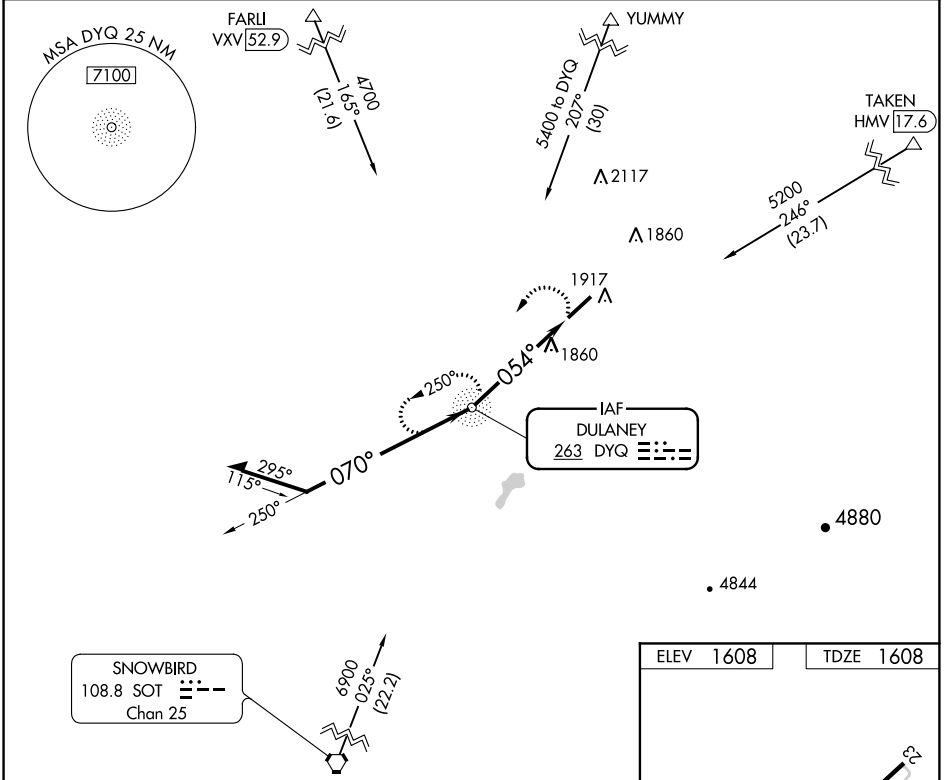
NDB RWY 5

GREENEVILLE-GREENE COUNTY MUNI (GCY)

▼ **NA** When local altimeter setting not received, use Tri-City altimeter setting and increase all MDA 80 feet; increase S-5 Cat C/D visibility and Circling Cat C visibility ½ mile and Circling Cat D visibility ½ mile. Circling Rwy 23 NA at night.

MISSED APPROACH: Climbing left turn to 3500 direct DYQ NDB and hold.

AWOS-3 128.425	TRI-CITY APP CON★ 128.05 317.5	UNICOM 122.7 (CTAF)
--------------------------	--	-------------------------------



CATEGORY	A	B	C	D
S-5	2160-1	552 (600-1)	2160-1½	552 (600-1½)
CIRCLING	2260-1	652 (700-1)	2260-1¾ 652 (700-1¾)	2260-2 652 (700-2)

SE-1, 28 MAR 2019 to 25 APR 2019

SE-1, 28 MAR 2019 to 25 APR 2019