

WAAS CH 58330 W05A	APP CRS 054°	Rwy Idg TDZE Apt Elev	6300 1608 1608
---------------------------------	------------------------	-----------------------------	---

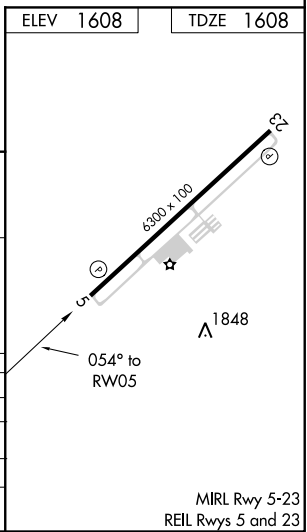
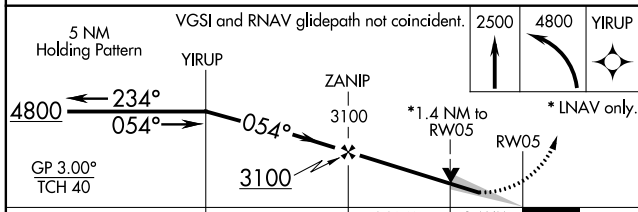
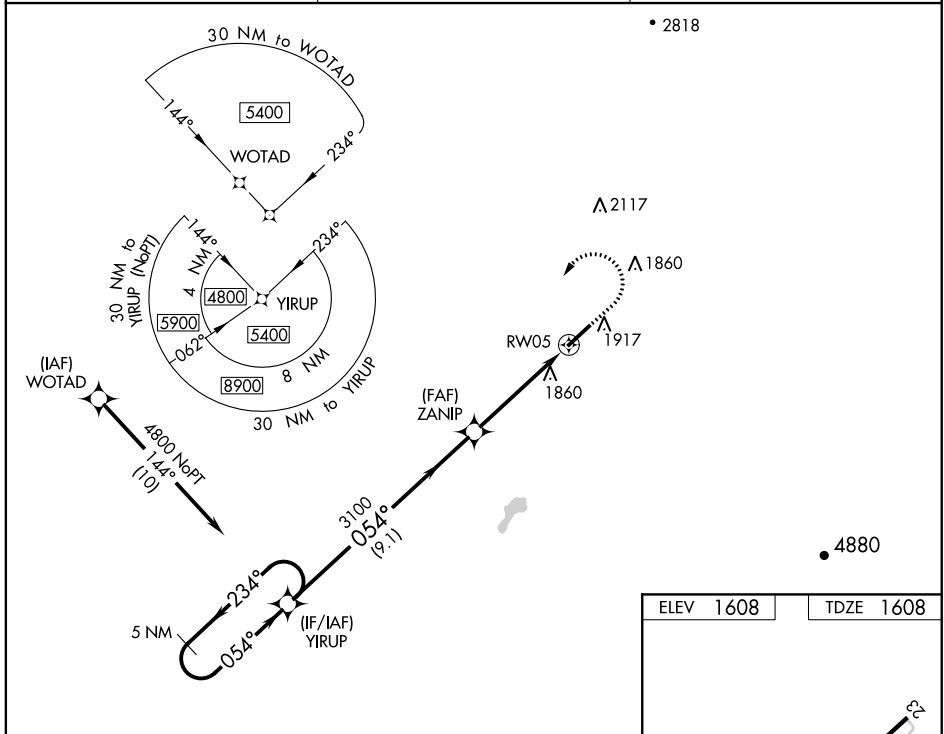
RNAV (GPS) RWY 5

GREENEVILLE-GREENE COUNTY MUNI (GCY)

⚠ NA For uncompensated Baro-VNAV systems, LNAV/VNAV NA below -18°C (0°F) or above 54°C (130°F). DME/DME RNP-0.3 NA. When local altimeter setting not received, use Tri-City altimeter setting and increase all DA 61 feet and all MDA 80 feet; increase LPV all Cats visibility 1/8 mile, LNAV/VNAV all Cats visibility 1/4 mile, LNAV Cat C/D visibility 1/8 mile, and Circling Cat C/D visibility 1/4 mile. Baro-VNAV and VDP NA when using Tri-City altimeter setting. Circling Rwy 23 NA at night.

MISSED APPROACH: Climb to 2500 then climbing left turn to 4800 direct YIRUP and hold.

AWOS-3 128.425	TRI-CITY APP CON* 128.05 317.5	UNICOM 122.7 (CTAF)
--------------------------	--	-------------------------------



CATEGORY	A	B	C	D
LPV DA		1876-1	268 (300-1)	
LNAV/VNAV DA		2189-2	581 (600-2)	
LNAV MDA	2140-1	532 (600-1)	2140-1 5/8	532 (600-1 5/8)
CIRCLING	2240-1	632 (700-1)	2240-1 3/4	2260-2 652 (700-2)