

APP CRS <b>360°</b>	Rwy Idg TDZE Apt Elev	<b>N/A</b> <b>N/A</b> <b>1357</b>
------------------------	-----------------------------	---

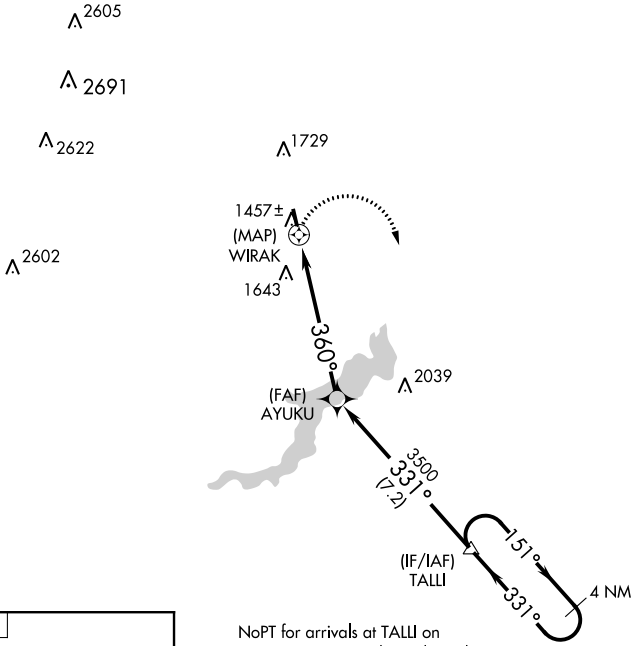
# RNAV (GPS)-B

CHERRY RIDGE (N30)

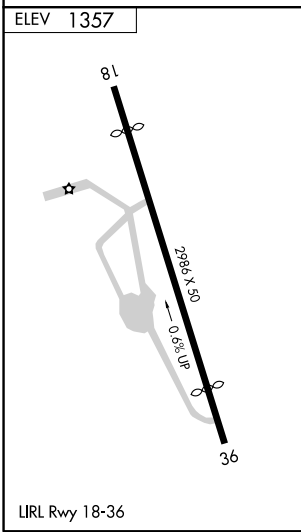
<p><b>▼</b> DME/DME RNP-0.3 NA. Procedure NA at night. Obtain local altimeter setting on CTAF; when not received, use Wilkes-Barre/Scranton Intl altimeter setting, and increase MDA 320 feet and Cat A visibility ¼ mile.</p> <p><b>▲</b> NA</p>	<p>MISSED APPROACH: Climbing right turn to 4000 direct TALLI and hold.</p>
<p>WILKES-BARRE APP CON <b>120.95 256.7</b></p>	<p>UNICOM <b>122.8 (CTAF)</b></p>

NE-4, 28 MAR 2019 to 25 APR 2019

NE-4, 28 MAR 2019 to 25 APR 2019



NoPT for arrivals at TALLI on V116-126-118 northwest bound.



4000	TALLI	4 NM Holding Pattern		
CATEGORY	A	B	C	D
CIRCLING	2080-1 723 (800-1)		NA	