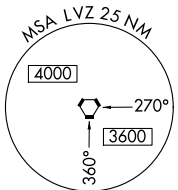
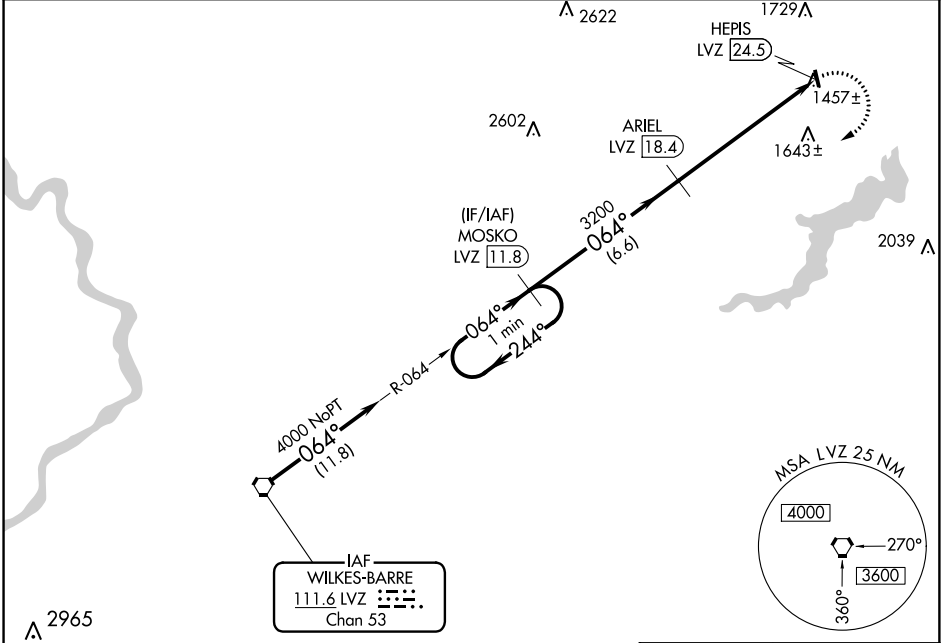


| | | | |
|--|------------------------|-----------------------------|---|
| VORTAC LVZ 111.6 Chan 53 | APP CRS 064° | Rwy Idg TDZE Apt Elev | N/A N/A 1357 |
|--|------------------------|-----------------------------|---|

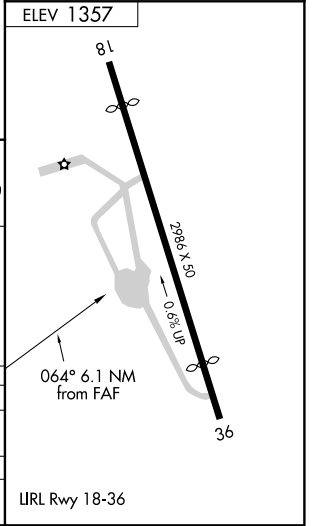
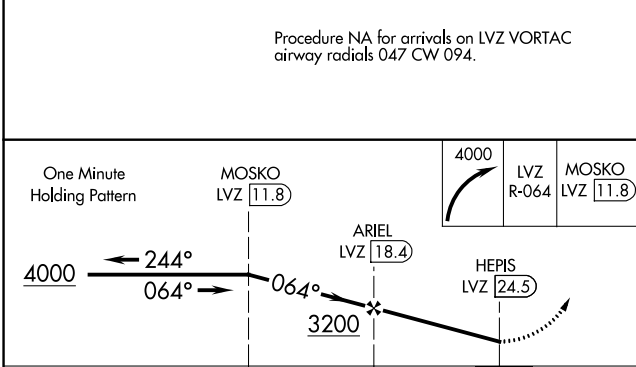
VOR/DME-A
CHERRY RIDGE (N30)

| | |
|--|--|
| <p>⚠ NA Obtain local altimeter setting on CTAF; when not received, use Wilkes-Barre/Scranton altimeter setting. Procedure NA at night. Helicopter visibility reduction below 1 SM NA.</p> | <p>MISSED APPROACH: Climbing right turn to 4000 on LVZ VORTAC R-064 to MOSKO/LVZ 11.8 DME and hold.</p> |
|--|--|

| | |
|---|---------------------------------------|
| <p>WILKES-BARRE APP CON 120.95 256.7</p> | <p>UNICOM 122.8 (CTAF)</p> |
|---|---------------------------------------|



Procedure NA for arrivals on LVZ VORTAC airway radials 047 CW 094.



| | | | | |
|---|---------------------------|---|----|---|
| CATEGORY | A | B | C | D |
| C CIRCLING | 2180-1¼ 823 (900-1¼) | | NA | |
| WILKES-BARRE/SCRANTON ALTIMETER SETTING | | | | |
| C CIRCLING | 2500-1¼ 1143 (1200-1¼) | | NA | |

NE-4, 28 MAR 2019 to 25 APR 2019

NE-4, 28 MAR 2019 to 25 APR 2019