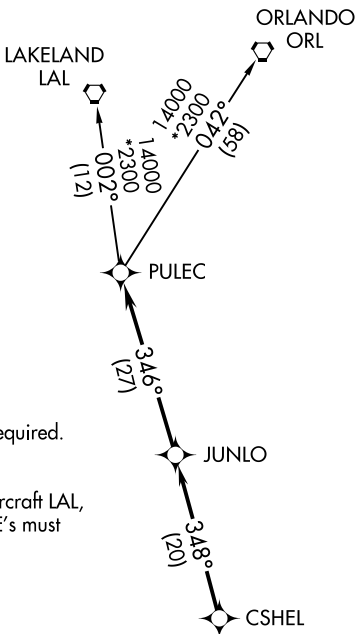


CSHEL SIX DEPARTURE (RNAV)

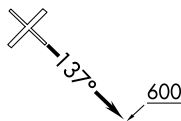
**TOP ALTITUDE:
2000**

ATIS	134.225
CLNC DEL	118.0
(120.25 When twr clsd)	
GND CON	121.6
NAPLES TOWER *	128.5 (CTAF)
FORT MYERS DEP CON *	120.25 371.85



- NOTE: RADAR required.
- NOTE: DME/DME/IRU or GPS required.
- NOTE: RNAV 1.
- NOTE: For turbojet aircraft only.
- NOTE: For non-GPS equipped aircraft LAL, LBV, RSW, and SRQ DME's must be operational.

TAKEOFF MINIMUMS
Rwys 5, 14, 23, 32: Standard.



NOTE: Chart not to scale.

DEPARTURE ROUTE DESCRIPTION

TAKEOFF RWYS 5, 23, 32: Climb on assigned heading for RADAR vectors to CSHEL, then on depicted route to PULEC, thence. . . .

TAKEOFF RWY 14: Climb heading 137° to 600, then on RADAR vectors to CSHEL, then on depicted route to PULEC, thence. . . .

. . . on (transition). Maintain 2000, or as assigned by ATC, expect filed altitude/flight level 10 minutes after departure.

LAKELAND TRANSITION (CSHEL6.LAL)
ORLANDO TRANSITION (CSHEL6.ORL)

CSHEL SIX DEPARTURE (RNAV)