

RNAV (GPS) RWY 5

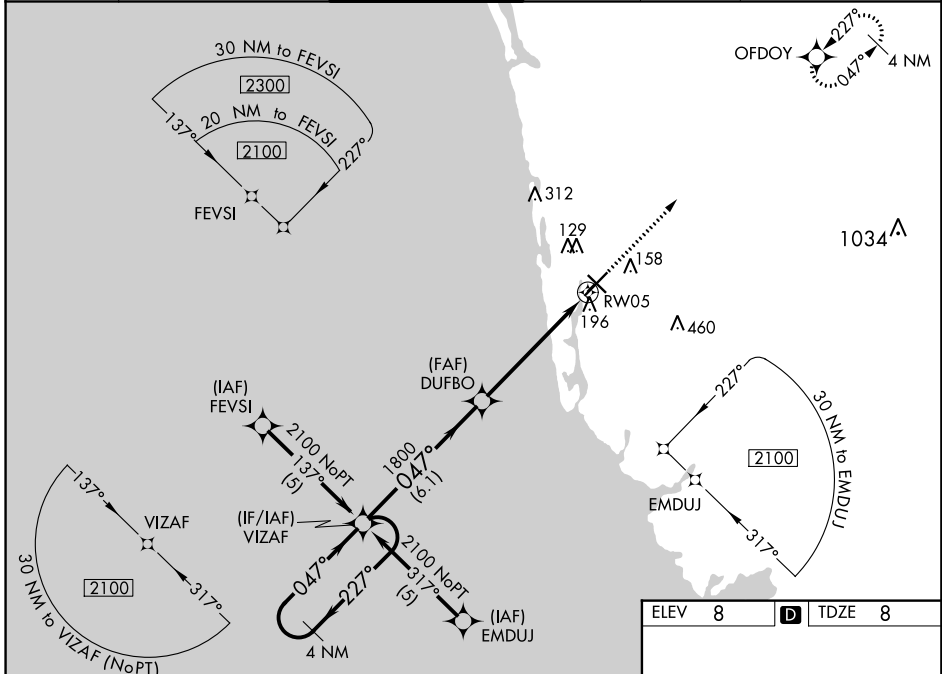
NAPLES MUNI (APF)

WAAS CH 73015 W05A	APP CRS 047°	Rwy ldg TDZE Apt Elev	5000 8 8
--	------------------------	-----------------------------	-------------------------------------

Baro-VNAV NA when using Southwest Florida Intl altimeter setting. For uncompensated Baro-VNAV systems, LNAV/VNAV NA below -15°C (5°F) or above 49°C (120°F). DME/DME RNP-0.3 NA. Visibility reduction by helicopters NA. When local altimeter setting not received, use Southwest Florida Intl altimeter setting and increase all DA 56 feet and all MDA 60 feet, increase LPV, LNAV/VNAV all Cats and LNAV Cats C/D visibility ¼ mile

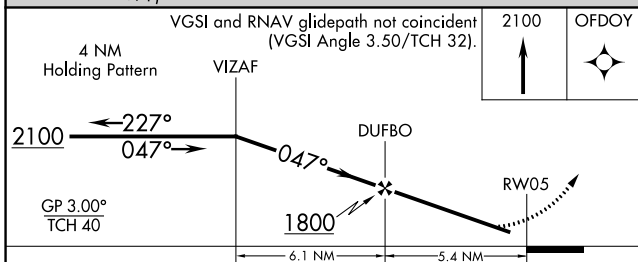
MISSED APPROACH:
Climb to 2100 direct OFDOY and hold.

ATIS 134.225	FORT MYERS APP CON* 120.25 371.85	NAPLES TOWER* 128.5 (CTAF) 0	GND CON 121.6	CLNC DEL 118.0	FORT MYERS CLNC DEL 120.25 (When tower clsd)
------------------------	---	---	-------------------------	--------------------------	---

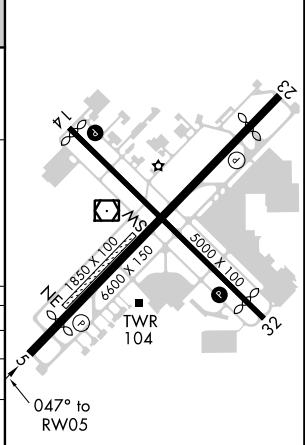


SE-3, 28 MAR 2019 to 25 APR 2019

SE-3, 28 MAR 2019 to 25 APR 2019



ELEV 8	TDZE 8
--------	--------



CATEGORY	A	B	C	D
LPV DA		295-1	287 (300-1)	
LNAV/VNAV DA		446-1½	438 (500-1½)	
LNAV MDA	460-1	452 (500-1)	460-1¼ 452 (500-1¼)	460-1½ 452 (500-1½)
CIRCLING	500-1	492 (500-1)	500-1½ 492 (500-1½)	560-2 552 (600-2)

REIL Rws 5, 14, 23 and 32
MIRL Rws 5-23 and 14-32