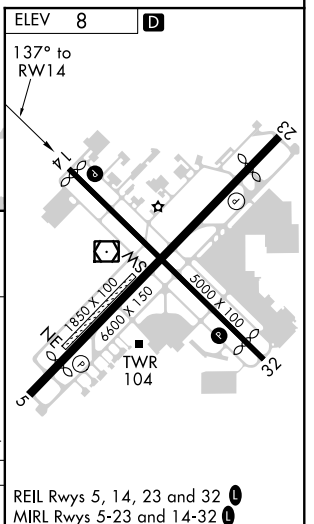
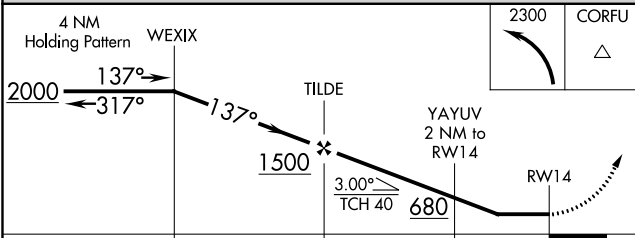
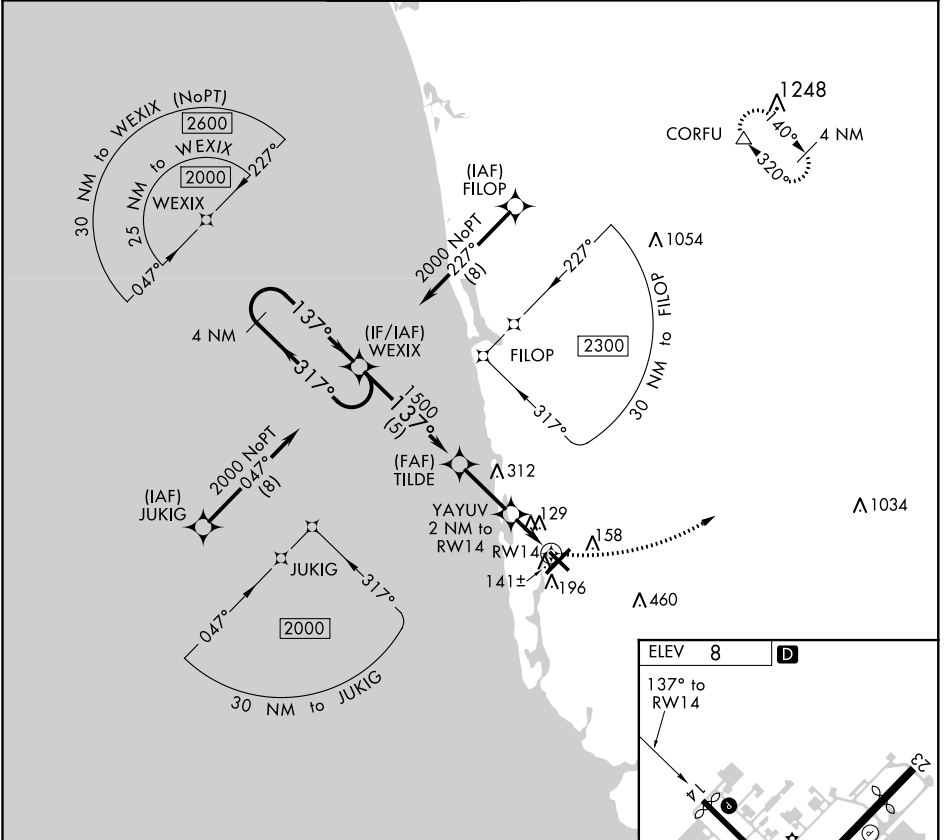


APP CRS	Rwy Idg	N/A
<b>137°</b>	TDZE	N/A
	Apt Elev	<b>8</b>

# RNAV (GPS)-B

## NAPLES MUNI (APF)

RNP APCH.		MISSED APPROACH: Climbing left turn to 2300 direct CORFU and hold.	
<p>▼ When local altimeter setting not received, use Southwest Florida Intl altimeter setting and increase all MDA 60 feet and increase Cat D visibility ¼ mile.</p>		ATIS	FORT MYERS APP CON*
<b>134.225</b>	<b>120.25 371.85</b>	NAPLES TOWER*	GND CON
		<b>128.5 (CTAF) 0</b>	<b>121.6</b>
		CLNC DEL	FORT MYERS CLNC DEL
		<b>118.0</b>	<b>120.25</b> (When tower clsd)



CATEGORY	A	B	C	D
CIRCLING	500-1	492 (500-1)	680-2 672 (700-2)	820-2¾ 812 (900-2¾)

REIL Rwy 5, 14, 23 and 32  
MIRL Rwy 5-23 and 14-32

SE-3, 28 MAR 2019 to 25 APR 2019

SE-3, 28 MAR 2019 to 25 APR 2019