

WAAS CH 63129 W08A	APP CRS 082°	Rwy Idg 3501 TDZE 739 Apt Elev 741
--	------------------------	---

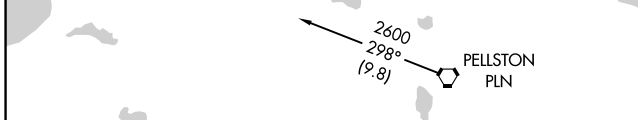
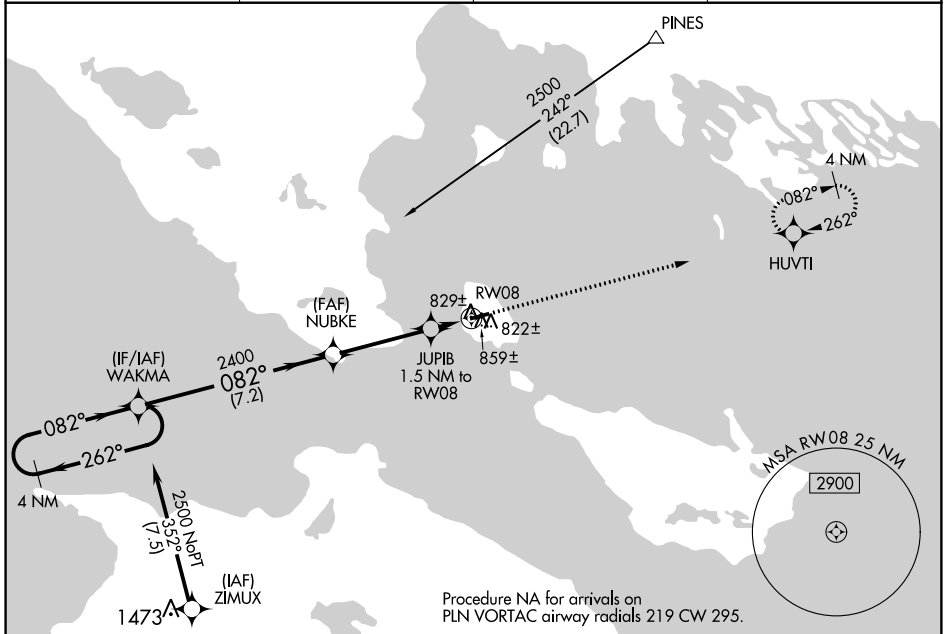
RNAV (GPS) RWY 8

MACKINAC ISLAND (MCD)

▼ When local altimeter setting not received, use Pellston altimeter setting and increase all MDA 60 feet, increase LP and LNAV Cat C visibility 1/8 mile and Circling Cat C visibility 1/4 mile.
▲ DME/DME RNP-0.3 NA. Helicopter visibility reduction below 1 SM NA.
 Night landing: Rwy 8 NA.

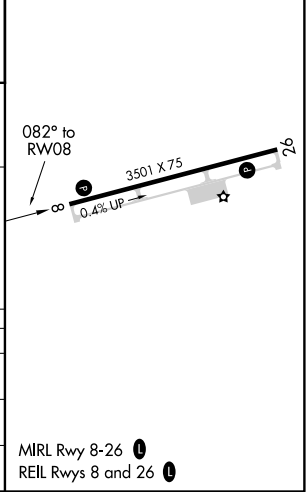
MISSED APPROACH:
Climb to 2500 direct HUVTI and hold.

AWOS-3 118.275	MINNEAPOLIS CENTER 134.6 354.05	UNICOM 122.7 (CTAF)	122.8
--------------------------	---	-------------------------------	--------------



ELEV 741	TDZE 739
----------	----------

4 NM Holding Pattern	WAKMA	NUBKE	JUPIB 1.5 NM to RW08	RW08
2500	2400	1240		
← 262°	082°	082°	3.00° TCH 40	0.4% UP
	7.2 NM	3.6 NM	1.5	



CATEGORY	A	B	C	D
LP MDA	1080-1 341 (400-1)			NA
LNAV MDA	1120-1 381 (400-1)	1120-1 381 (400-1 1/8)		NA
C CIRCLING	1320-1 579 (600-1)	1320-1 579 (600-1 1/2)		NA

EC-1, 28 MAR 2019 to 25 APR 2019

EC-1, 28 MAR 2019 to 25 APR 2019