

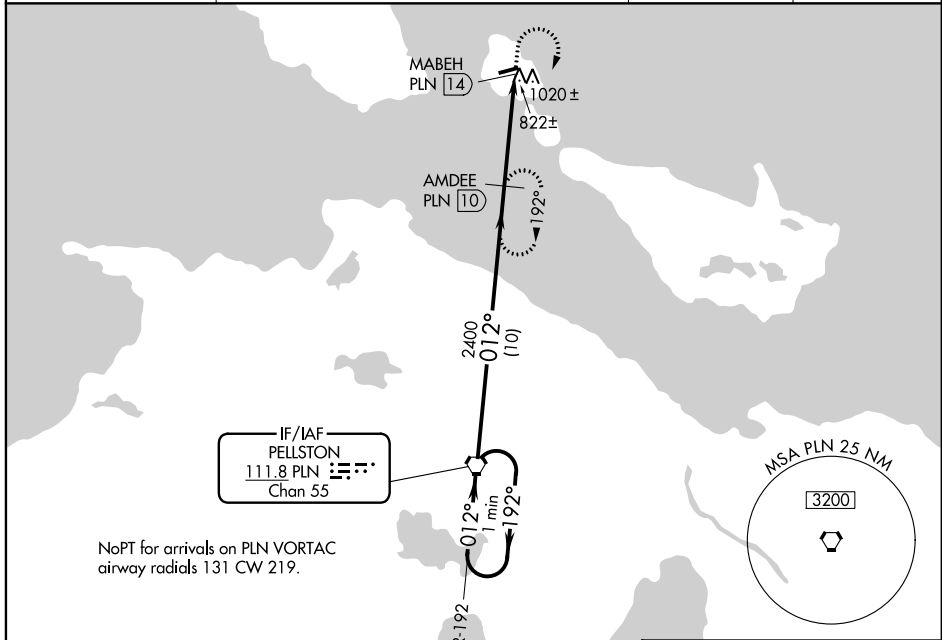
VORTAC PLN 111.8 Chan 55	APP CRS 012°	Rwy Idg TDZE Apt Elev N/A N/A 741
---------------------------------------	------------------------	---

VOR/DME-A
MACKINAC ISLAND (MCD)

When local altimeter setting not received, use Pellston altimeter setting and increase all MDA 60 feet, increase Cat C visibility ¼ mile.
 Visibility reduction by helicopters NA. Night landing: Rwy 8 NA.

MISSED APPROACH: Climb to 1400 then climbing right turn to 2400 direct AMDEE 10 DME and hold.

AWOS-3 118.275	MINNEAPOLIS CENTER 134.6 354.05	UNICOM 122.7 (CTAF)	122.8
--------------------------	---	-------------------------------	--------------

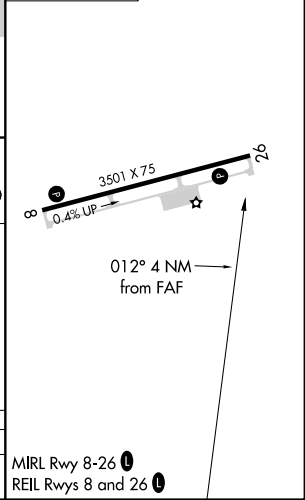
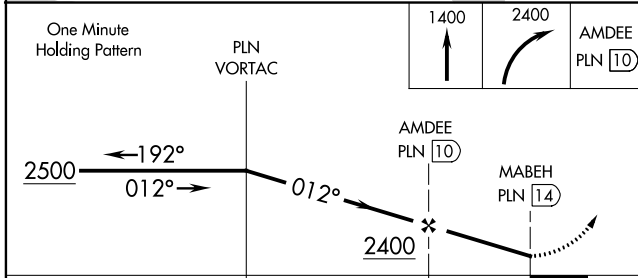


EC-1, 28 MAR 2019 to 25 APR 2019

EC-1, 28 MAR 2019 to 25 APR 2019



ELEV 741



CATEGORY	A	B	C	D
CIRCLING	1320-1	579 (600-1)	1320-1½ 579 (600-1½)	NA

MIRL Rwy 8-26
 REIL Rwys 8 and 26