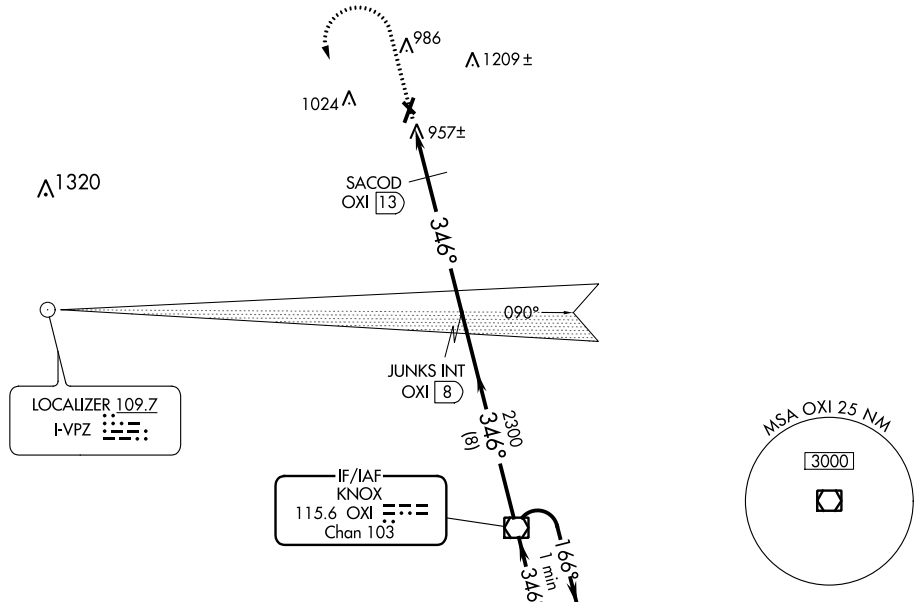


VOR/DME OXI 115.6 Chan 103	APP CRS 346°	Rwy Idg TDZE Apt Elev N/A N/A 812
--	------------------------	---

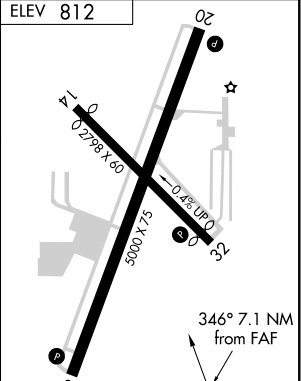
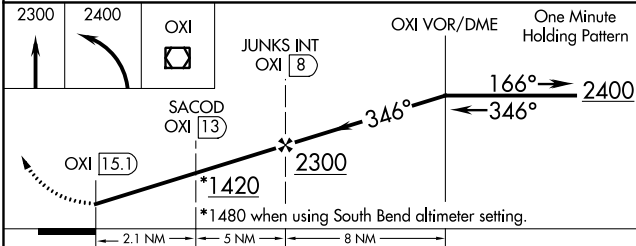
VOR-A
LA PORTE MUNI (PPO)

▼ When local altimeter setting not received, use South Bend altimeter setting and increase all MDA 60 feet.
▲ NA MISSED APPROACH: Climb to 2300 then climbing left turn to 2400 direct OXI VOR/DME and hold.

AWOS-3 119.825	SOUTH BEND APP CON * 132.05 257.8	UNICOM 123.0 (CTAF) 0
--------------------------	---	--



NoPT for arrival on OXI VOR/DME
airway radials 066 CW 276.



CATEGORY	A	B	C	D
CIRCLING	1420-1 608 (700-1)		1420-1¾ 608 (700-1¾)	1420-2 608 (700-2)
SACOD FIX MINIMUMS				
CIRCLING	1320-1 508 (600-1)		1320-1½ 508 (600-1½)	1380-2 568 (600-2)

Knots	60	90	120	150	180
	Min:Sec	7:06	4:44	3:33	2:50

EC-2. 28 MAR 2019 to 25 APR 2019

EC-2. 28 MAR 2019 to 25 APR 2019