

WAAS CH <b>93516</b> <b>W17A</b>	APP CRS <b>171°</b>	Rwy Idg TDZE Apt Elev	<b>5000</b> <b>5</b> <b>5</b>
--	------------------------	-----------------------------	-------------------------------------

# RNAV (GPS) RWY 17

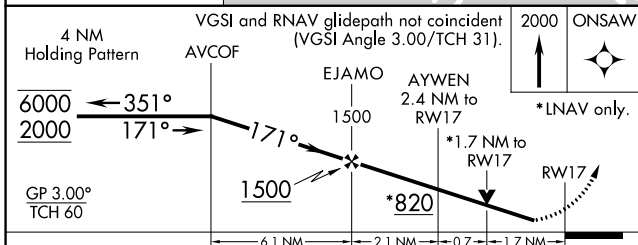
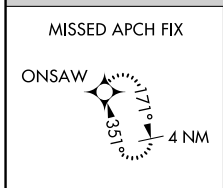
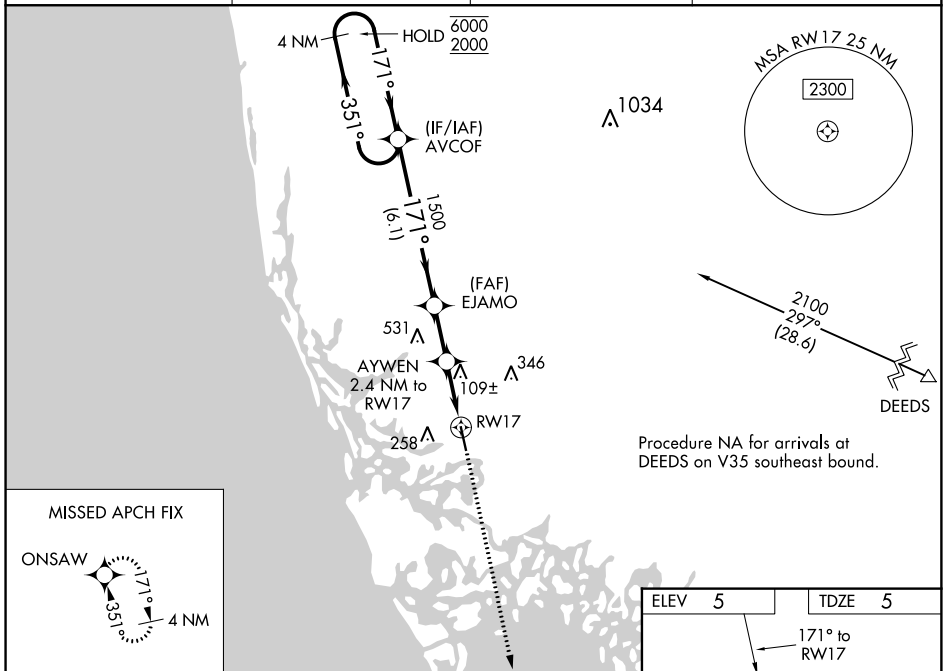
MARCO ISLAND EXECUTIVE (MKY)

PBN APCH.

Baro-VNAV and VDP NA when using Naples altimeter setting.  
Rwy 17 helicopter visibility reduction below 3/4 SM NA. For uncompensated Baro-VNAV systems, LNAV/VNAV NA below 2°C or above 54°C.  
When local altimeter setting not received, use Naples altimeter setting and increase all DA 26 feet and all MDA 40 feet; increase LNAV/VNAV all Cats visibility 1/4 SM.

MISSED APPROACH: Climb to 2000 direct ONSAW and hold.

AWOS-3PT <b>120.075</b>	FORT MYERS APP CON * <b>119.75 327.8</b>	CLNC DEL <b>120.8</b>	UNICOM <b>122.7</b> (CTAF) <b>0</b>
----------------------------	---	--------------------------	--



ELEV 5	TDZE 5
171° to RW17	
Z1	
5000 X 100	
35	
REIL Rwy 17 and 35 0	
MIRL Rwy 17-35 0	

CATEGORY	A	B	C	D
LPV DA		300-1	295 (300-1)	
LNAV/VNAV DA		458-1½	453 (500-1½)	
LNAV MDA	560-1	555 (600-1)	560-1½ 555 (600-1½)	560-1¾ 555 (600-1¾)
CIRCLING	620-1	615 (700-1)	620-1¾ 615 (700-1¾)	620-2 615 (700-2)