

APP CRS	Rwy Idg	<b>5501</b>
<b>347°</b>	TDZE	<b>308</b>
	Apt Elev	<b>319</b>

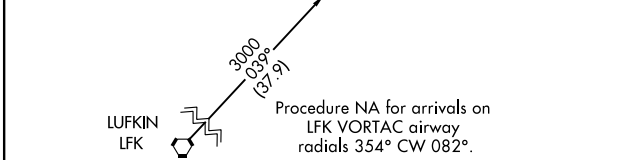
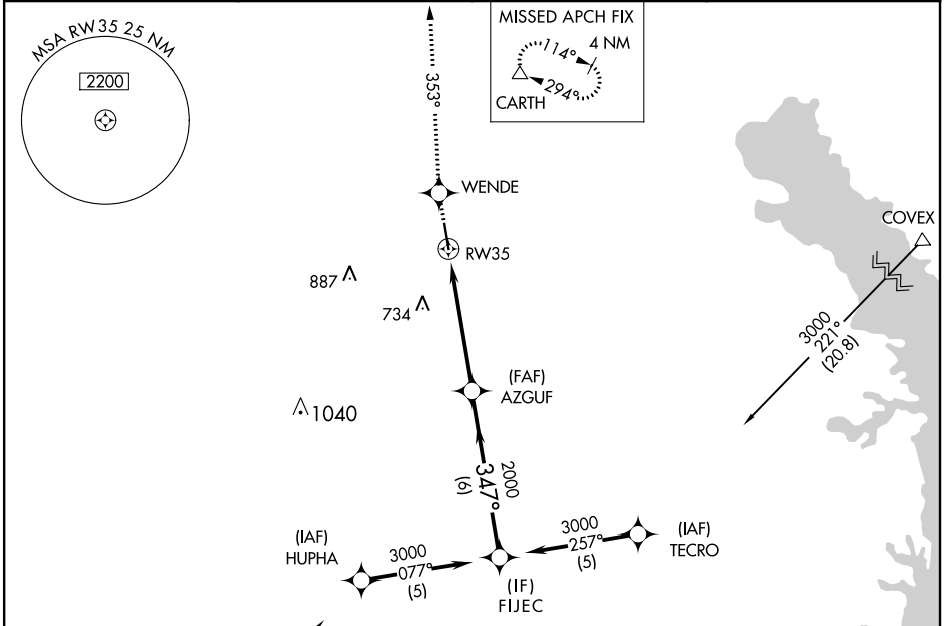
# RNAV (GPS) RWY 35

CENTER MUNI (F17)

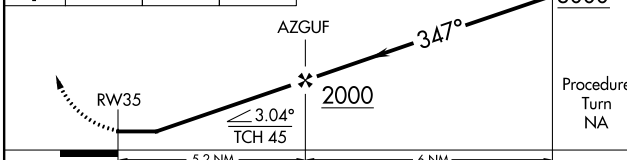
**▼** DME/DME RNP-0.3 NA. Helicopter visibility reduction below 1 SM NA.  
**▲NA** Use Nacogdoches altimeter setting; when not received, use Henderson altimeter setting and increase all MDA 40 feet, and increase LNAV and Circling Cat C visibility ¼ mile. Procedure NA at night.

**MISSED APPROACH:** Climb to 3800 direct WENDE and on track 353° to CARTH and hold.

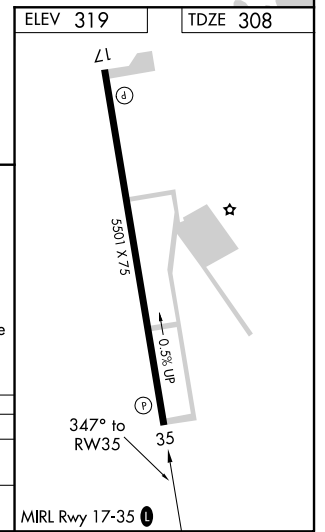
AWOS-3PT <b>128.775</b>	NACOGDOCHES AWOS-3 <b>135.625</b>	FORTH WORTH CENTER <b>126.325 346.25</b>	UNICOM <b>122.8 (CTAF) ①</b>
----------------------------	--------------------------------------	---	---------------------------------



3800	WENDE	tr 353°	CARTH	VGSI and descent angles not coincident (VGSI Angle 3.00/TCH 49).	FIJEC
------	-------	---------	-------	--	-------



CATEGORY	A	B	C	D
LNAV MDA	960-1 652 (700-1)		960-1¾ 652 (700-1¾)	NA
CIRCLING	960-1 641 (700-1)		960-1¾ 641 (700-1¾)	NA



SC-5, 28 MAR 2019 to 25 APR 2019

SC-5, 28 MAR 2019 to 25 APR 2019