

COLUMBUS, OHIO

AL-6846 (FAA)

19059

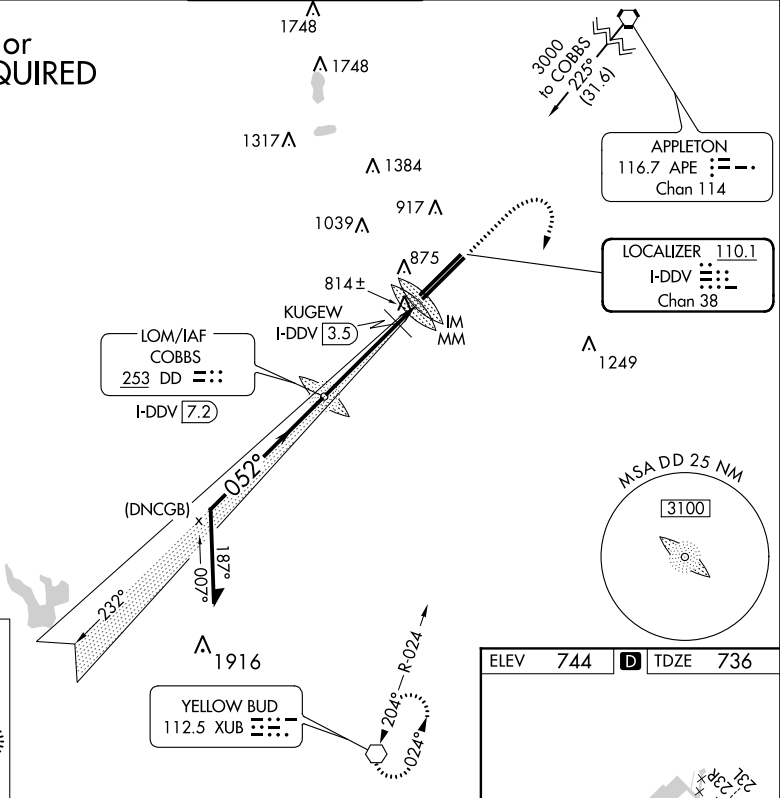
LOC/DME I-DDV 110.1 Chan 38	APP CRS 052°	Rwy Idg TDZE 736 Apt Elev 744	12102
---	------------------------	---	--------------

ILS RWY 5R (CAT II)

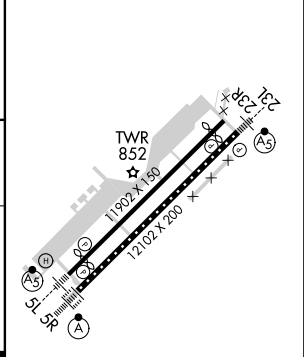
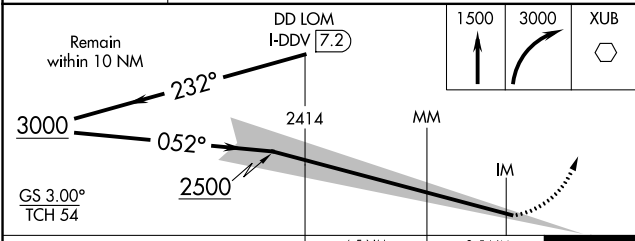
RICKENBACKER INTL (LCK)

A Procedure NA when using John Glenn Columbus Intl altimeter setting.	ALSF-2	MISSED APPROACH: Climb to 1500 then climbing right turn to 3000 direct XUB VOR and hold.				
	<table border="1"> <tr> <td>ATIS 132.75</td> <td>COLUMBUS APP CON 134.0 279.6</td> <td>RICK TOWER 120.05 348.4</td> <td>GND CON 125.275 275.8</td> <td>CLNC DEL 125.275 275.8</td> </tr> </table>	ATIS 132.75	COLUMBUS APP CON 134.0 279.6	RICK TOWER 120.05 348.4	GND CON 125.275 275.8	CLNC DEL 125.275 275.8
ATIS 132.75	COLUMBUS APP CON 134.0 279.6	RICK TOWER 120.05 348.4	GND CON 125.275 275.8	CLNC DEL 125.275 275.8		

ADF or DME REQUIRED



ELEV 744	D TDZE 736
----------	-------------------



CATEGORY	A	B	C	D
S-ILS 5R	RA 100/12 100 DA 836			
CATEGORY II ILS - SPECIAL AIRCREW & AIRCRAFT CERTIFICATION REQUIRED				

TDZ/CL Rwy 5R
REIL Rwy 23R
HIRL Rwys 5L-23R and 5R-23L

EC-2: 28 MAR 2019 to 25 APR 2019

EC-2: 28 MAR 2019 to 25 APR 2019

COLUMBUS, OHIO
Amdt 3B 02APR15

39°49'N-82°56'W

RICKENBACKER INTL (LCK)
ILS RWY 5R (CAT II)