

LOC I-LCK 110.1	APP CRS 232°	Rwy Idg	23L	23R
		TDZE	740	743
		Apt Elev	744	744

ILS or LOC RWY 23L


RICKENBACKER INTL (LCK)

⚠ Circling NA northwest of Rwy 5L-23R. When local altimeter setting not received, use John Glenn Columbus Intl altimeter setting and increase all DA 36 feet and all MDA 40 feet, increase S-LOC 23L visibility Cat C and D to RVR 5500.

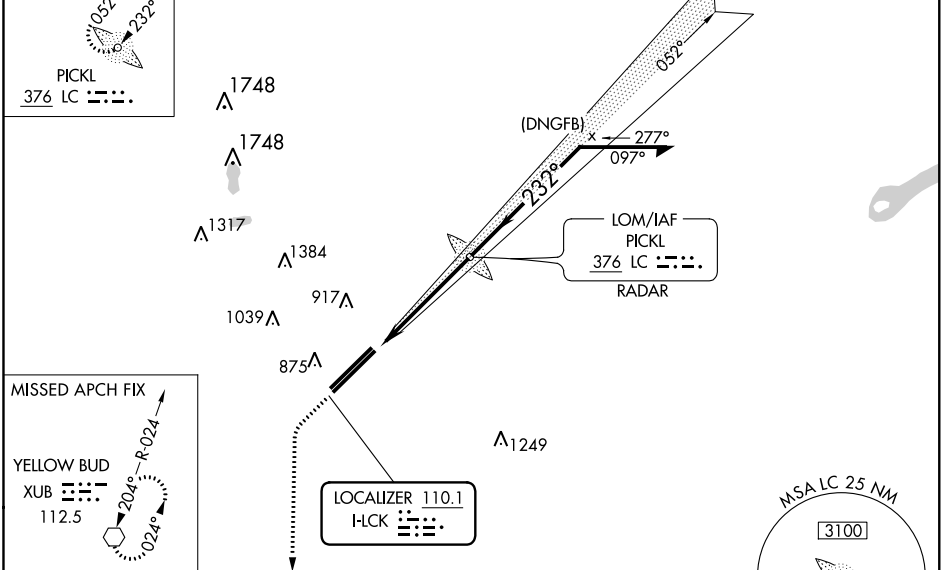
MALSR

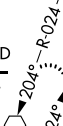
 MISSED APPROACH: Climb to 3000, then left turn direct XUB VOR and hold.

ATIS 132.75	COLUMBUS APP CON 134.0 279.6	RICK TOWER 120.05 348.4	GND CON 125.275 275.8	CLNC DEL 125.275 275.8
-----------------------	--	-----------------------------------	---------------------------------	----------------------------------

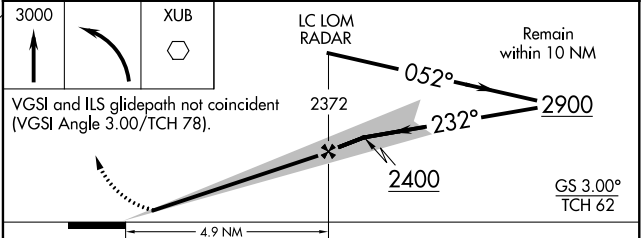
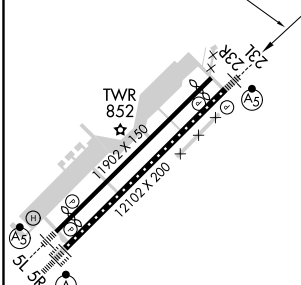
ALTERNATE MISSED APCH FIX

 PICKL
 376 LC

RADAR REQUIRED



MISSED APCH FIX
 YELLOW BUD
 XUB
 112.5


ELEV 744	TDZE 23L 740	TDZE 23R 743
	232° 4.9 NM from FAF	



CATEGORY	A	B	C	D
S-ILS 23L	940/24 200 (200-½)			
S-LOC 23L	1 220/24	480 (500-½)	1 220/50	480 (500-1)
SIDESTEP RWY 23R	1 220-1	477 (500-1)	1 220-1½	477 (500-2)
CIRCLING	1 220-1	476 (500-1)	1 220-1½	1 300-2
			476 (500-1½)	556 (600-2)

TDZ/CL Rwy 5R				
REIL Rwy 23R				
HIRL Rwy 5L-23R and 5R-23L				
FAF to MAP 4.9 NM				
Knots	60	90	120	150
Min:Sec	4:54	3:16	2:27	1:58

EC-2, 28 MAR 2019 to 25 APR 2019

EC-2, 28 MAR 2019 to 25 APR 2019