

LOC/DME I-FQS <b>110.55</b> Chan 42 (Y)	APP CRS <b>052°</b>	Rwy Idg <b>11004</b> TDZE <b>744</b> Apt Elev <b>744</b>
---	------------------------	--

# ILS or LOC RWY 5L

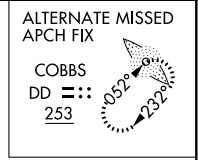
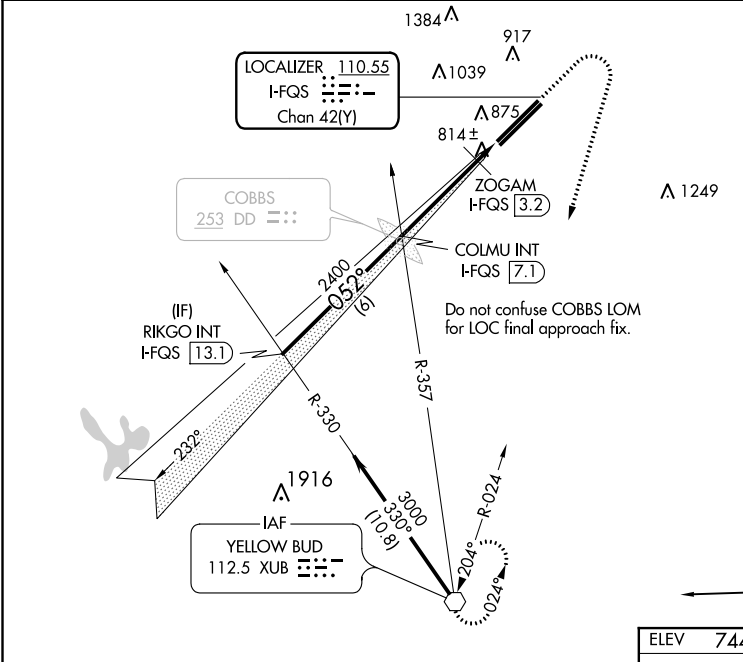
RICKENBACKER INTL (LCK)

**⚠** Circling NA northwest of Rwy 5L-23R. When local altimeter setting not received, use John Glenn Columbus Intl altimeter setting and increase all DA 36 Feet and all MDA 40 feet, increase S-LOC 5L visibility Cat C and D ½ mile; increase ZOGAM fix minimums visibility Cat C and D ¾ mile.

**MALSR**  
AS

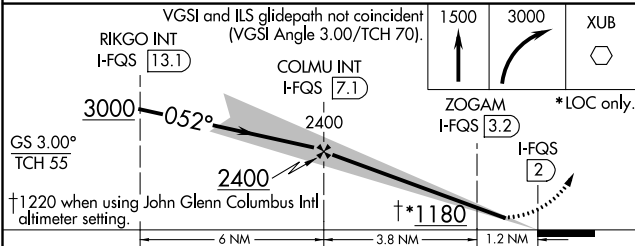
**MISSED APPROACH:** Climb to 1500 then climbing right turn to 3000 direct XUB VOR and hold.

ATIS <b>132.75</b>	COLUMBUS APP CON <b>134.0 279.6</b>	RICK TOWER <b>120.05 348.4</b>	GND CON <b>125.275 275.8</b>	CLNC DEL <b>125.275 275.8</b>
-----------------------	--	-----------------------------------	---------------------------------	----------------------------------



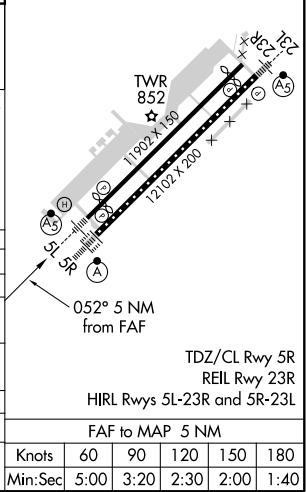
EC-2, 28 MAR 2019 to 25 APR 2019

EC-2, 28 MAR 2019 to 25 APR 2019



ELEV 744	<b>D</b> TDZE 744
----------	-------------------

CATEGORY	A	B	C	D
S-ILS 5L	944-½		200 (200-½)	
S-LOC 5L	1180-½	436 (500-½)	1180-¾	436 (500-¾)
CIRCLING	1180-1 436 (500-1)	1200-1 456 (500-1)	1200-1½ 456 (500-1½)	1300-2 556 (600-2)
ZOGAM FIX MINIMUMS				
S-LOC 5L	1080-½		336 (400-½)	
CIRCLING	1180-1 436 (500-1)	1200-1 456 (500-1)	1200-1½ 456 (500-1½)	1300-2 556 (600-2)



Knots	60	90	120	150	180
Min:Sec	5:00	3:20	2:30	2:00	1:40