

LOC/DME I-DDV <b>110.1</b> Chan <b>38</b>	APP CRS <b>052°</b>	Rwy Idg <b>12102</b> TDZE <b>736</b> Apt Elev <b>744</b>
---	------------------------	--

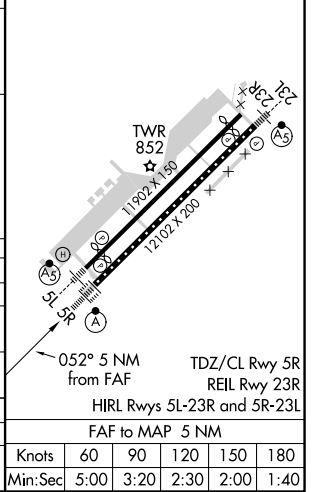
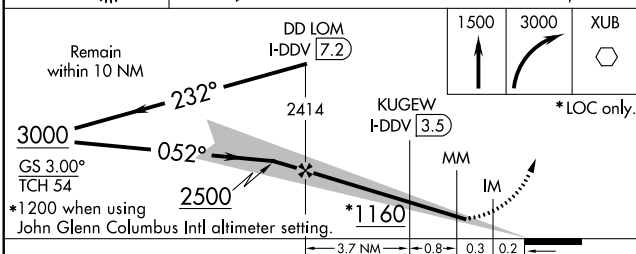
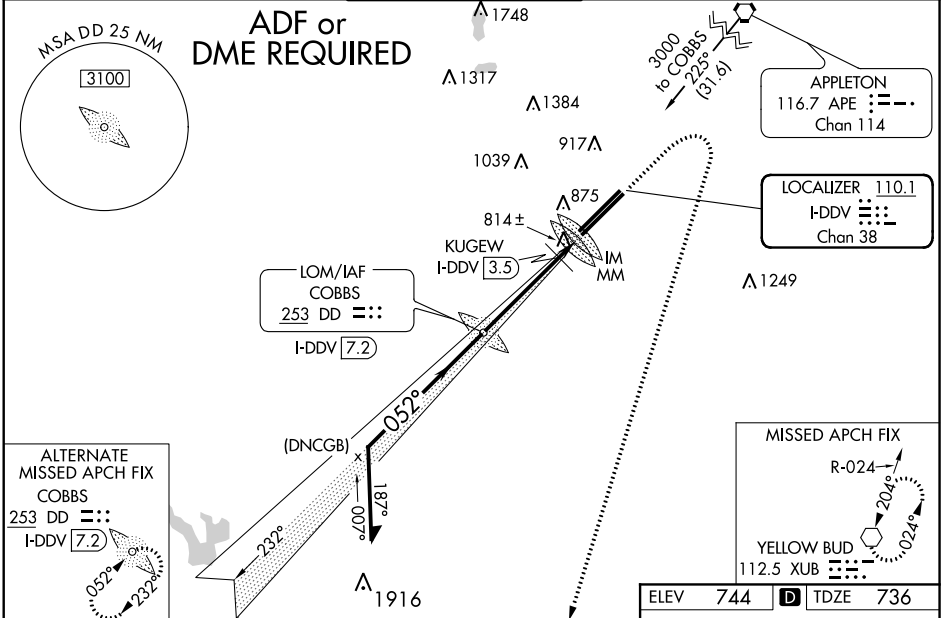
# ILS or LOC RWY 5R

RICKENBACKER INTL (LCK)

**▲** Circling NA northwest of Rwy 05L-23R. When local altimeter setting not received, use John Glenn Columbus Intl altimeter setting and increase all DA 36 feet and all MDA 40 feet. Increase S-ILS 5R all Cats visibility to RVR 2400, S-LOC 5R Cat C/D visibility to RVR 5000, and KUGEW FIX minimums S-LOC 5R Cat C/D visibility to RVR 3500. For inoperative ALSF-2 when using John Glenn Columbus Intl altimeter setting, increase S-LOC 5R visibility Cats C/D to 1 $\frac{1}{2}$ . KUGEW FIX minimums: for inoperative ALSF-2 when using John Glenn Columbus Intl altimeter setting increase S-LOC 5R Cats C/D visibility to RVR 6000.

**ALSF-2**  
MISSED APPROACH:  
Climb to 1500 then climbing right turn to 3000 direct XUB VOR and hold.

ATIS <b>132.75</b>	COLUMBUS APP CON <b>134.0 279.6</b>	<b>RICK TOWER</b> <b>120.05 348.4</b>	GND CON <b>125.275 275.8</b>	CLNC DEL <b>125.275 275.8</b>
-----------------------	--	--	---------------------------------	----------------------------------



CATEGORY	A	B	C	D
S-ILS 5R		936/18	200 (200- $\frac{1}{2}$ )	
S-LOC 5R	1180/24 436 (500-1)	424 (500- $\frac{1}{2}$ )	1160/40 456 (500-1 $\frac{1}{2}$ )	424 (500- $\frac{3}{4}$ )
CIRCLING	1180-1 436 (500-1)	1200-1 456 (500-1)	1200-1 $\frac{1}{2}$ 456 (500-1 $\frac{1}{2}$ )	1300-2 556 (600-2)
KUGEW FIX MINIMUMS				
S-LOC 5R	1080/24 436 (500-1)	344 (400- $\frac{1}{2}$ )	1080/30 456 (500-1 $\frac{1}{2}$ )	344 (400- $\frac{3}{4}$ )
CIRCLING	1180-1 436 (500-1)	1200-1 456 (500-1)	1200-1 $\frac{1}{2}$ 456 (500-1 $\frac{1}{2}$ )	1300-2 556 (600-2)

EC-2, 28 MAR 2019 to 25 APR 2019

EC-2, 28 MAR 2019 to 25 APR 2019