

LOM LC 376	APP CRS 233°	Rwy Idg 12102 TDZE 740 Apt Elev 744
----------------------	------------------------	--

NDB RWY 23L

RICKENBACKER INTL (LCK)

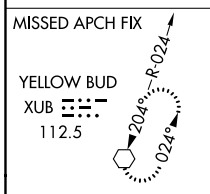
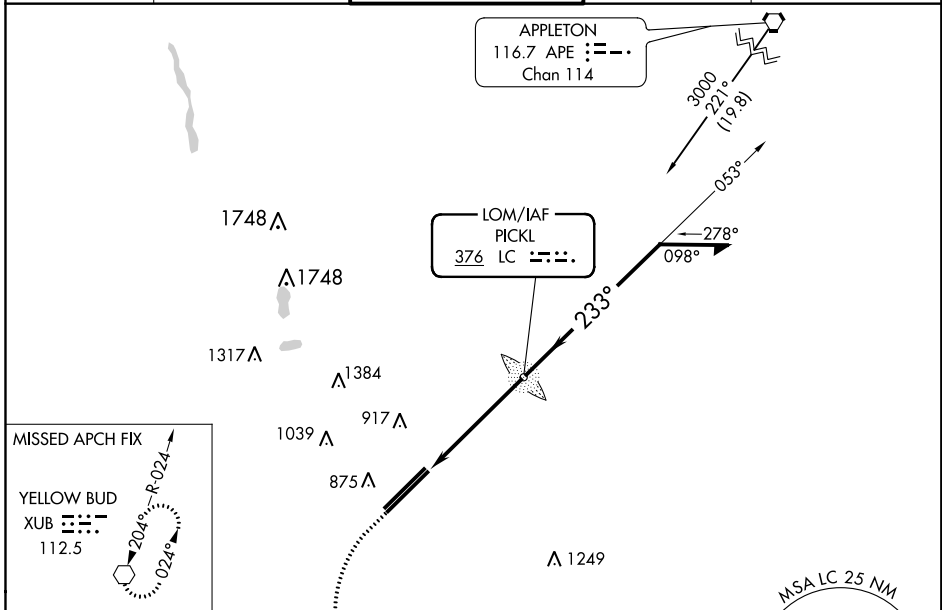
NA Circling NA northwest of Rwy 5L-23R. When local altimeter setting not received, use John Glenn Columbus Intl altimeter setting and increase all MDA 40 feet, and increase S-23L Cat C/D visibility to 1 $\frac{3}{4}$. For inoperative MALSR, increase S-23L Cat D visibility to 1 $\frac{1}{2}$ mile. When using John Glenn Columbus Intl altimeter setting, increase S-23L Cat C/D visibility to 1 $\frac{3}{4}$ mile.

MALSR

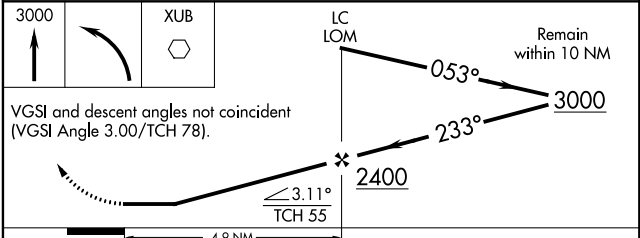
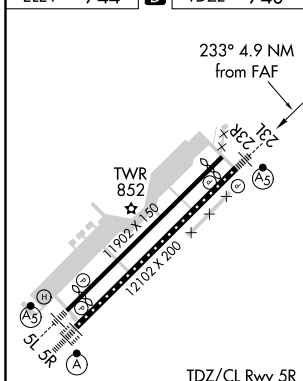


MISSED APPROACH:
Climb to 3000 then left turn direct XUB VOR and hold.

ATIS 132.75	COLUMBUS APP CON 134.0 279.6	RICK TOWER 120.05 348.4	GND CON 125.275 275.8	CLNC DEL 125.275 275.8
-----------------------	--	-----------------------------------	---------------------------------	----------------------------------



ELEV 744	D	TDZE 740
-----------------	----------	-----------------



	A	B	C	D
S-23L	1280/40 540 (600- $\frac{3}{4}$)		1280/60 540 (600-1 $\frac{1}{4}$)	
CIRCLING	1280-1 536 (600-1)		1280-1 $\frac{5}{8}$ 536 (600-1 $\frac{1}{2}$)	1300-2 556 (600-2)

EC-2, 28 MAR 2019 to 25 APR 2019

EC-2, 28 MAR 2019 to 25 APR 2019