

LOM DD 253	APP CRS 053°	Rwy Idg 12102 TDZE 736 Apt Elev 744
----------------------	------------------------	--

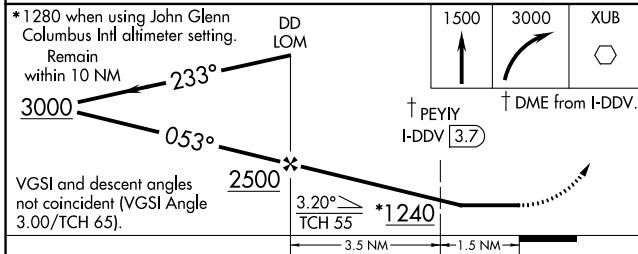
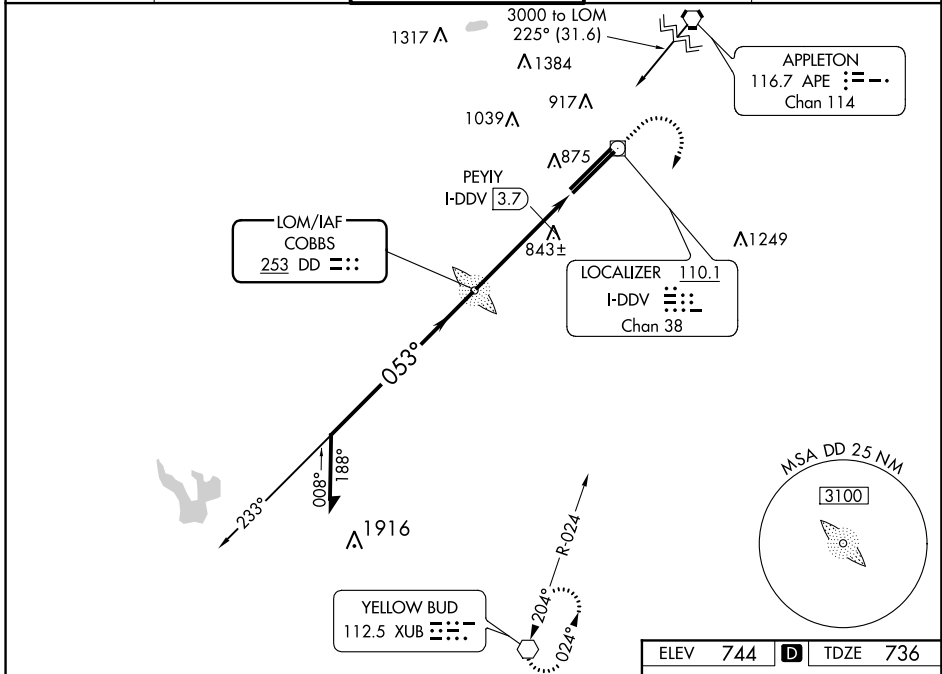
NDB RWY 5R

RICKENBACKER INTL (LCK)

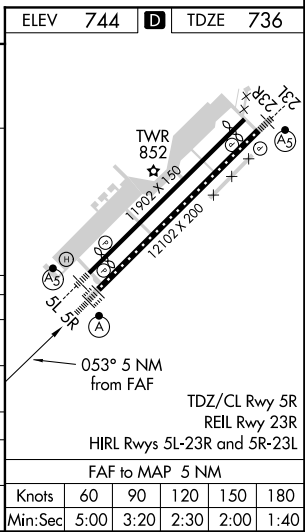
NA Inoperative table does not apply. When local altimeter setting not received, use John Glenn Columbus Intl altimeter setting and increase all MDA 40 feet, increase S-5R Cat C/D visibility to RVR 6000 and PEYIY Fix minimums S-5R Cat C/D visibility to RVR 5000. Circling NA northwest of Rwy 5L-23R.

ALS-2 MISSED APPROACH: Climb to 1500 then climbing right turn to 3000 direct XUB VOR and hold.

ATIS 132.75	COLUMBUS APP CON 134.0 279.6	RICK TOWER 120.05 348.4	GND CON 125.275 275.8	CLNC DEL 125.275 275.8
-----------------------	--	-----------------------------------	---------------------------------	----------------------------------



CATEGORY	A	B	C	D
S-5R	1240/40	504 (500-¾)	1240/55	504 (500-1)
CIRCLING	1240-1	496 (500-1)	1240-1½ 496 (500-1½)	1300-2 556 (600-2)
*PEYIY FIX MINIMUMS				
S-5R	1160/40		424 (500-¾)	
CIRCLING	1180-1 436 (500-1)	1200-1 456 (500-1)	1200-1½ 456 (500-1½)	1300-2 556 (600-2)



EC-2: 28 MAR 2019 to 25 APR 2019

EC-2: 28 MAR 2019 to 25 APR 2019

ELEV	744	TDZE	736		
Knots	60	90	120	150	180
Min:Sec	5:00	3:20	2:30	2:00	1:40