

WAAS CH <b>62811</b> <b>W23A</b>	APP CRS <b>230°</b>	Rwy Idg <b>12102</b> TDZE <b>739</b> Apt Elev <b>744</b>
--	------------------------	--

# RNAV (GPS) RWY 23L

RICKENBACKER INTL (LCK)

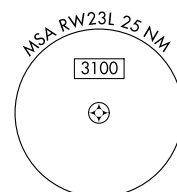
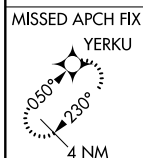
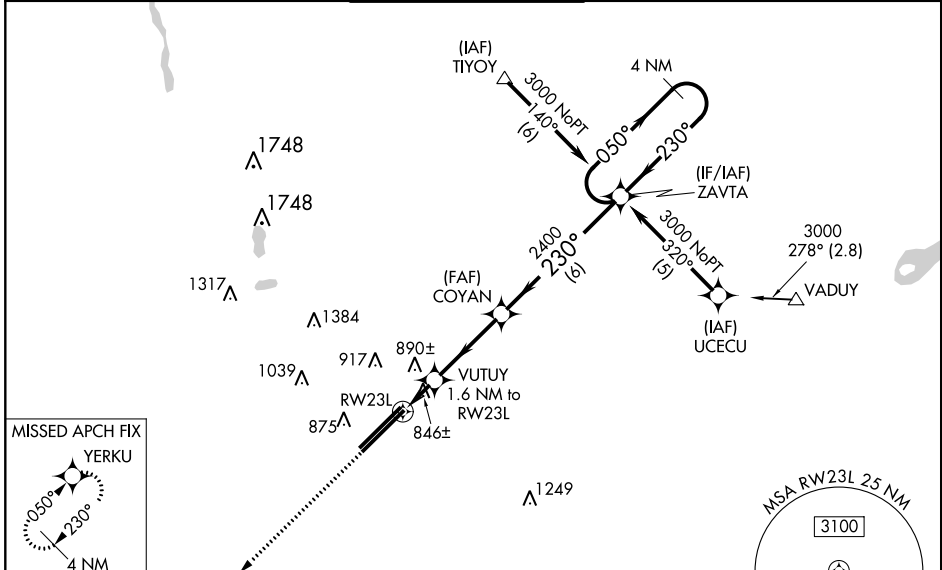
**A** Circling NA NW of Rwy 5L-23R. Baro-VNAV NA when using John Glenn Columbus Intl altimeter setting. For uncompensated Baro-VNAV systems, LNAV/VNAV NA below -16°C (4°F) or above 47°C (116°F). DME/DME RNP-0.3 NA. When local altimeter setting not received, use John Glenn Columbus Intl altimeter setting and increase all DA 36 feet and LNAV/VNAV all Cats visibility to RVR 5000, increase all MDA 40 feet. \*\* RVR 1800 authorized with use of FD or AP or HUD to DA, NA when using John Glenn Columbus Intl altimeter setting.

MALSR

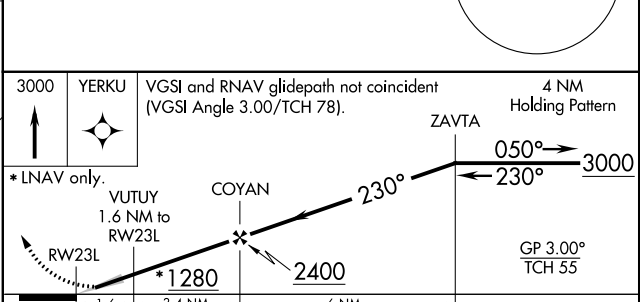
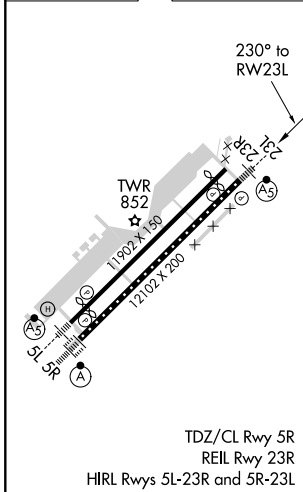


**MISSED APPROACH:**  
Climb to 3000 direct YERKU and hold.

ATIS <b>132.75</b>	COLUMBUS APP CON <b>134.0 279.6</b>	RICK TOWER <b>120.05 348.4</b>	GND CON <b>125.275 275.8</b>	CLNC DEL <b>125.275 275.8</b>
-----------------------	--	-----------------------------------	---------------------------------	----------------------------------



ELEV <b>744</b>	<b>D</b>	TDZE <b>739</b>
-----------------	----------	-----------------



CATEGORY	A	B	C	D
LPV DA **		939/24	200 (200-½)	
LNAV/VNAV DA		1121/40	382 (400-¾)	
LNAV MDA	1180/24	441 (500-½)	1180/40 441 (500-¾)	1180/50 441 (500-1)
CIRCLING	1180-1 436 (500-1)	1200-1 456 (500-1)	1200-1½ 456 (500-1½)	1300-2 556 (600-2)

EC-2, 28 MAR 2019 to 25 APR 2019

EC-2, 28 MAR 2019 to 25 APR 2019