

WAAS CH <b>78421</b> <b>W23B</b>	APP CRS <b>230°</b>	Rwy Idg TDZE Apt Elev	<b>10913</b> <b>743</b> <b>744</b>
--	------------------------	-----------------------------	--

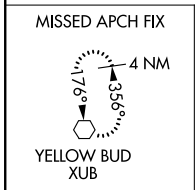
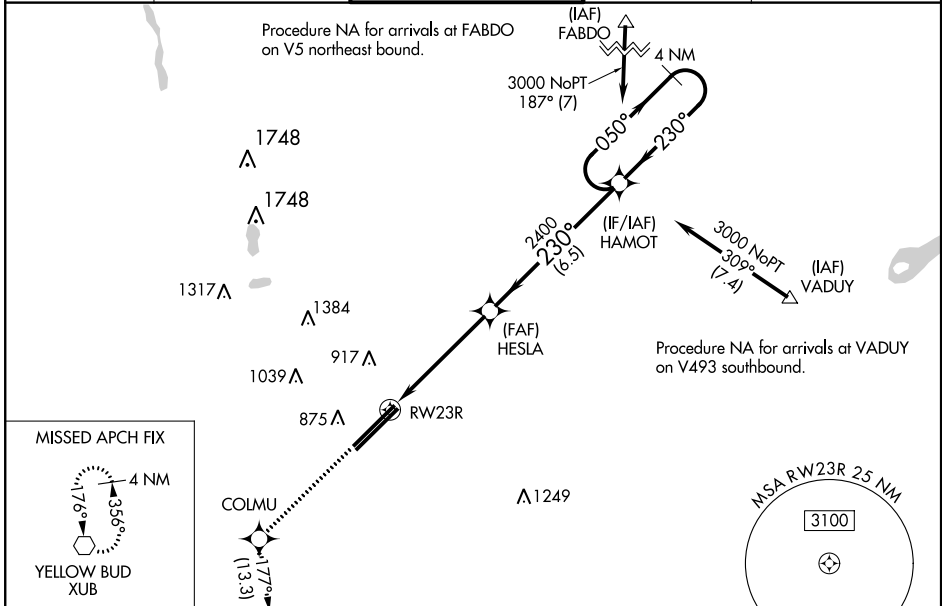
# RNAV (GPS) RWY 23R

RICKENBACKER INTL (LCK)

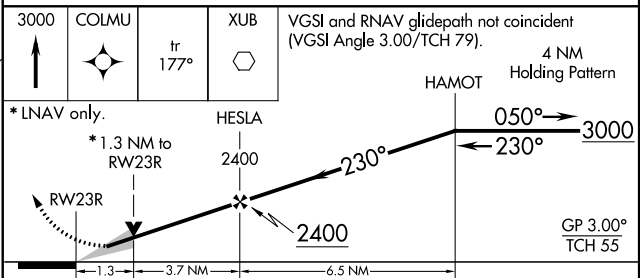
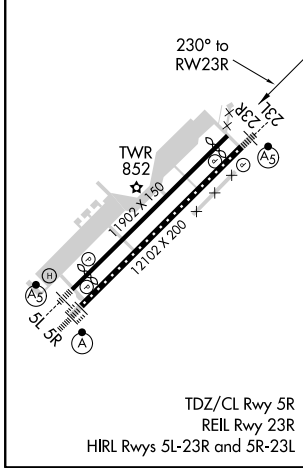
**▲** Baro-VNAV NA when using John Glenn Columbus Intl altimeter setting. For uncompensated Baro-VNAV systems, LNAV/VNAV NA below -16°C (4°F) or above 39°C (102°F). Circling NA northwest of Rwy 5L-23R. DME/DME RNP-0.3 NA. VDP NA with John Glenn Columbus Intl altimeter setting. When local altimeter setting not received, use John Glenn Columbus Intl altimeter setting and increase all DA 36 feet and all MDA 40 feet. Increase LNAV/VNAV visibility 1/8 mile all Cats.

**MISSED APPROACH:** Climb to 3000 direct COLMU and on track 177° to XUB VOR and hold.

ATIS <b>132.75</b>	COLUMBUS APP CON <b>134.0 279.6</b>	RICK TOWER <b>120.05 348.4</b>	GND CON <b>125.275 275.8</b>	CLNC DEL <b>125.275 275.8</b>
-----------------------	--	-----------------------------------	---------------------------------	----------------------------------



ELEV <b>744</b>	<b>D</b>	TDZE <b>743</b>
-----------------	----------	-----------------



CATEGORY	A	B	C	D
LPV DA		943-3/4	200 (200-3/4)	
LNAV/VNAV DA		993-3/4	250 (300-3/4)	
LNAV MDA	1220-1	477 (500-1)	1220-1 3/8	477 (500-1 3/8)
CIRCLING	1220-1	476 (500-1)	1220-1 1/2	1300-2
			476 (500-1 1/2)	556 (600-2)

EC-2, 28 MAR 2019 to 25 APR 2019

EC-2, 28 MAR 2019 to 25 APR 2019