


WAAS CH 78022 W05B	APP CRS 050°	Rwy Idg 11004 TDZE 744 Apt Elev 744
--	------------------------	--

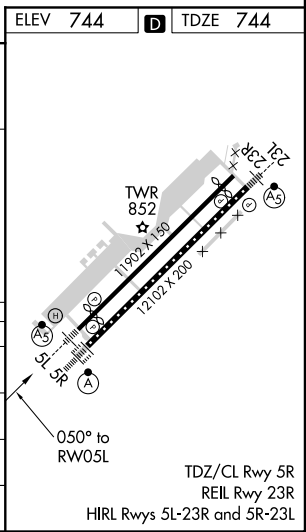
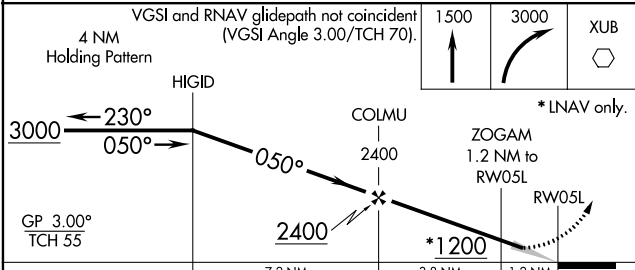
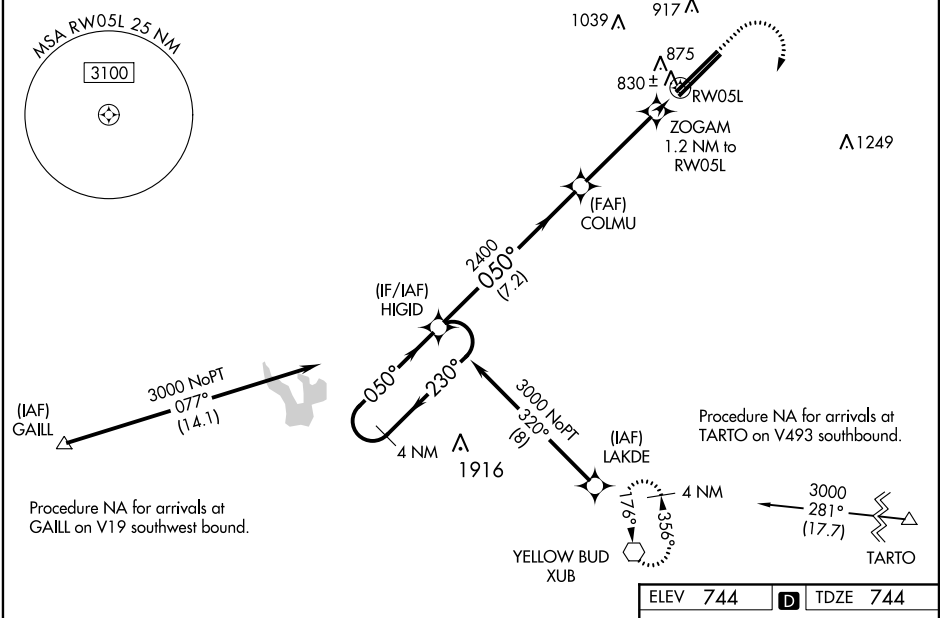
RNAV (GPS) RWY 5L

RICKENBACKER INTL (LCK)

⚠ Baro-VNAV NA when using John Glenn Columbus Intl altimeter setting. For uncompensated Baro-VNAV systems, LNAV/VNAV NA below -16°C (4°F) or above 39°C (102°F). For inoperative MALS, increase LNAV/VNAV all Cats visibility to ¾ mile. Circling NA northwest of Rwy 5L-23R. DME/DME RNP-0.3 NA. When local altimeter setting not received, use John Glenn Columbus Intl altimeter setting and increase all DA 36 feet, and all MDA 40 feet. Increase LNAV Cat C and D visibility ½ mile.

MALS

MISSED APPROACH:
 Climb to 1500 then climbing right turn to 3000 direct XUB VOR and hold.

ATIS 132.75	COLUMBUS APP CON 134.0 279.6	RICK TOWER 120.05 348.4	GND CON 125.275 275.8	CLNC DEL 125.275 275.8
-----------------------	--	-----------------------------------	---------------------------------	----------------------------------



CATEGORY	A	B	C	D
LPV DA		944-½	200 (200-½)	
LNAV/VNAV DA		994-½	250 (300-½)	
LNAV MDA		1080-½	336 (400-½)	
CIRCLING	1180-1 436 (500-1)	1200-1 456 (500-1)	1200-½ 456 (500-½)	1300-2 556 (600-2)

EC-2, 28 MAR 2019 to 25 APR 2019

EC-2, 28 MAR 2019 to 25 APR 2019