


WAAS CH <b>78410</b> <b>W05A</b>	APP CRS <b>050°</b>	Rwy Idg <b>12102</b> TDZE <b>736</b> Apt Elev <b>744</b>
--	------------------------	--

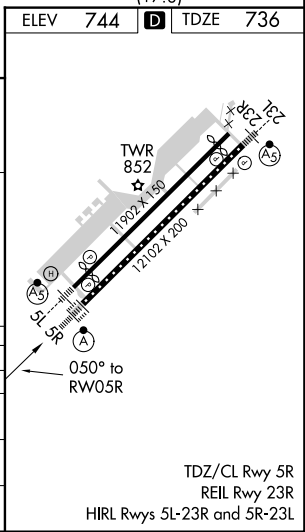
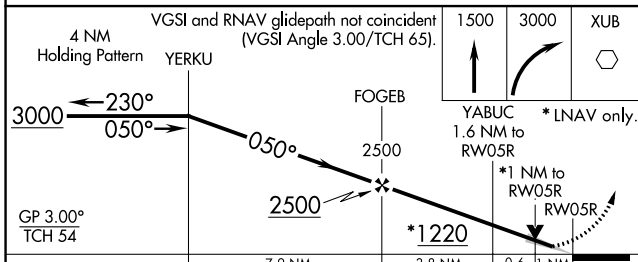
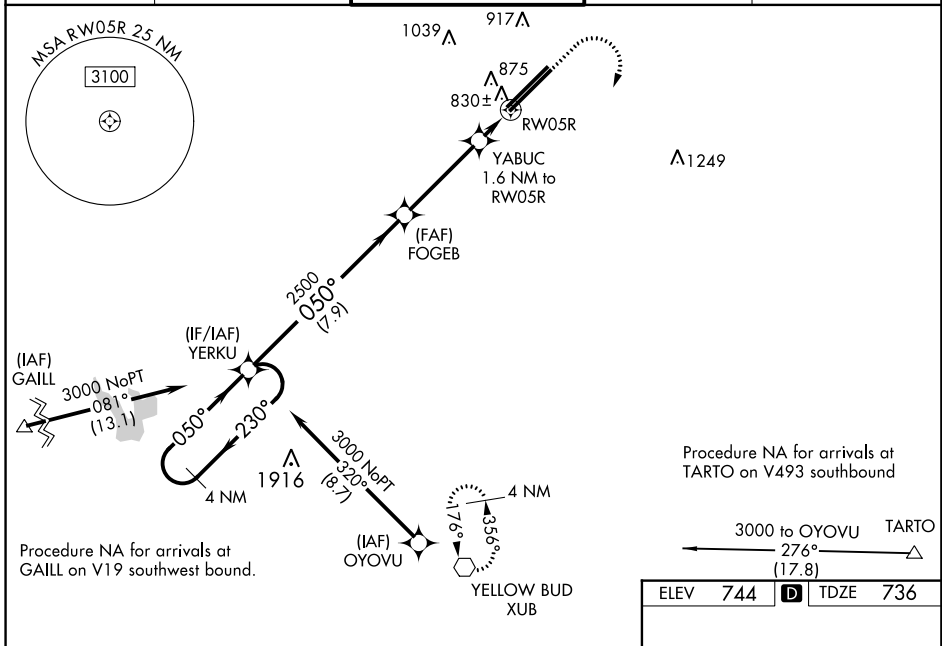
# RNAV (GPS) RWY 5R

RICKENBACKER INTL (LCK)

**⚠** Baro-VNAV NA when using John Glenn Columbus Intl altimeter setting. For uncompensated Baro-VNAV systems, LNAV/VNAV NA below -16°C (4°F) or above 39°C (102°F). Circling NA northwest of Rwy 5L-23R. DME/DME RNP-0.3 NA. VDP NA with John Glenn Columbus Intl altimeter setting. When local altimeter setting not received, use John Glenn Columbus Intl altimeter setting and increase all DA 36 feet, and all MDA 40 feet. Increase LNAV Cat C and D visibility to RVR 4000. For inop ALSF when using John Glenn Columbus Intl altimeter setting, increase LNAV/VNAV visibility to 1 mile all Cats.

**ALSF-2**  
  
**MISSED APPROACH:**  
Climb to 1500 then climbing right turn to 3000 direct XUB VOR and hold.

ATIS <b>132.75</b>	COLUMBUS APP CON <b>134.0 279.6</b>	RICK TOWER <b>120.05 348.4</b>	GND CON <b>125.275 275.8</b>	CLNC DEL <b>125.275 275.8</b>
-----------------------	--	-----------------------------------	---------------------------------	----------------------------------



CATEGORY	A	B	C	D
LPV DA		936/18	200 (200-1/2)	
LNAV/VNAV DA		1012/24	276 (300-1/2)	
LNAV MDA	1120/24	384 (400-1/2)	1120/35	384 (400-5/8)
CIRCLING	1180-1 436 (500-1)	1200-1 456 (500-1)	1200-1 1/2 456 (500-1 1/2)	1300-2 556 (600-2)