

APP CRS	Rwy Idg	<b>2721</b>
<b>001°</b>	TDZE	<b>919</b>
	Apt Elev	<b>919</b>

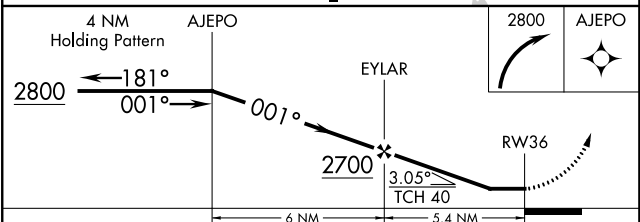
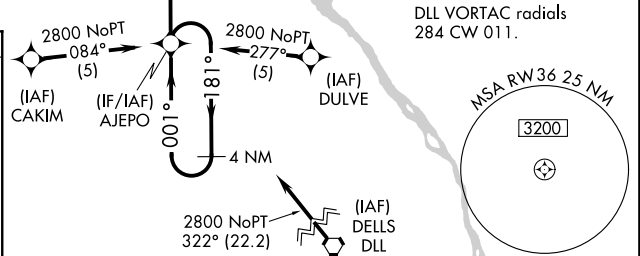
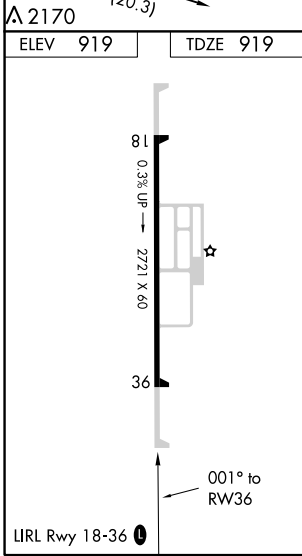
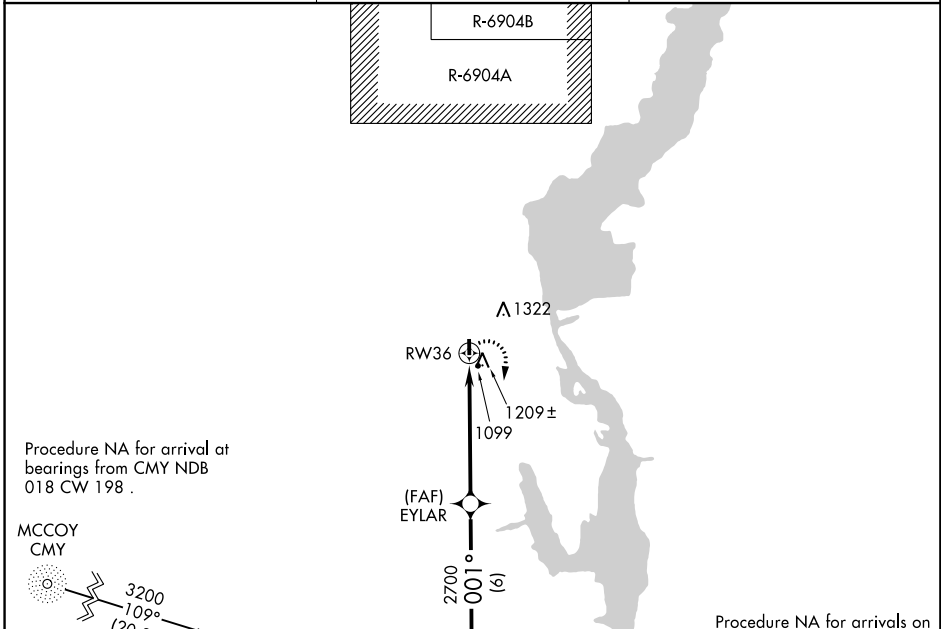
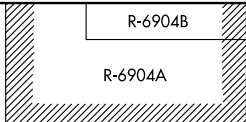
# RNAV (GPS) RWY 36

NECEDAH (DAF)

**▼** Rwy 36 helicopter visibility reduction below 1 SM NA.  
**▲** NA DME/DME-0.3 NA. Procedure NA at night. Use Wisconsin Rapids altimeter setting.

MISSED APPROACH: Climbing right turn to 2800 direct AJEPO and hold.

ALEXANDER FIELD SOUTH WOOD COUNTY ASOS-3 <b>126.575</b>	VOLK APP CON ★ <b>135.25 244.875</b>	UNICOM <b>122.7 (CTAF) 0</b>
---	---	---------------------------------



CATEGORY	A	B	C	D
LNAV MDA	1540-1	621 (700-1)		NA
CIRCLING	1580-1	661 (700-1)		NA

EC-3, 28 MAR 2019 to 25 APR 2019

EC-3, 28 MAR 2019 to 25 APR 2019