

WAAS CH 49129 W32A	APP CRS 320°	Rwy Idg TDZE Apt Elev	3688 905 908
--	------------------------	-----------------------------	---

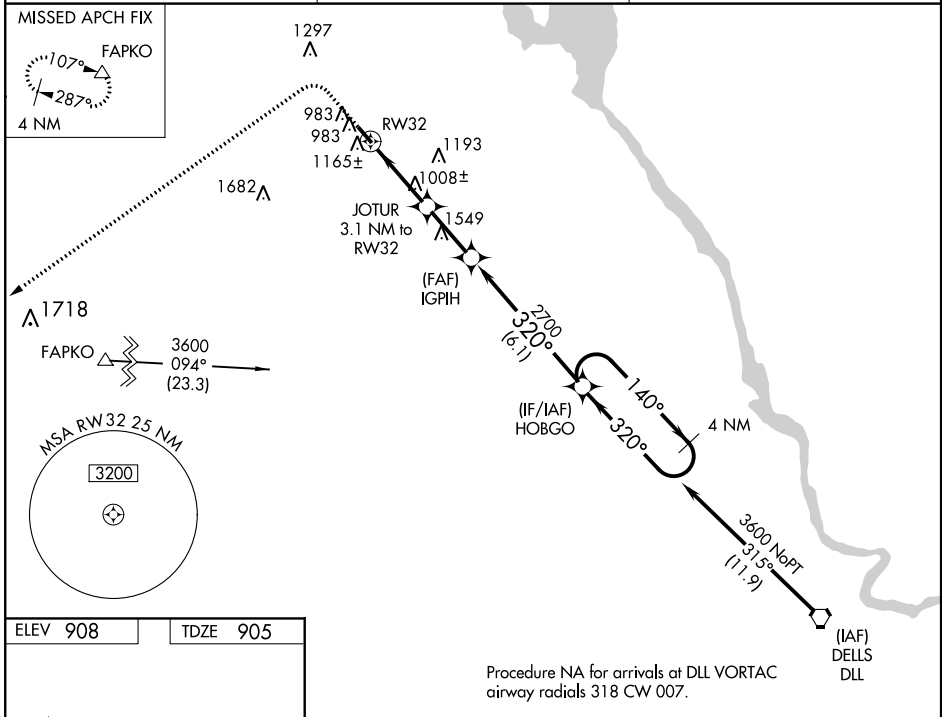
RNAV (GPS) RWY 32

MAUSTON-NEW LISBON UNION (82C)

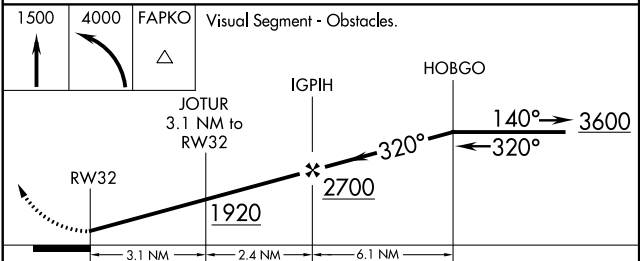
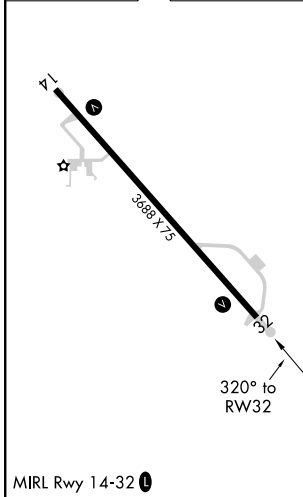
NA DME/DME RNP-0.3 NA. Use Volk Field altimeter setting; when not received use Wisconsin Dells altimeter setting and increase all MDA 60 feet and all Cat C visibilities ¼ mile. Night landing: Rwy 14/32 NA. Helicopter visibility reduction below 1 SM NA.

MISSED APPROACH: Climb to 1500 then climbing left turn to 4000 direct FAPKO and hold.

AWOS-3 123.925	VOLK APP CON ★ 135.25 244.875	CTAF 122.9
--------------------------	---	----------------------



ELEV 908	TDZE 905
----------	----------



CATEGORY		A	B	C	D
LP	MDA	1280-1	375 (400-1)	1280-1½ 375 (400-1½)	NA
LNAV	MDA	1440-1	535 (600-1)	1440-1½ 535 (600-1½)	NA
CIRCLING		1560-1	652 (700-1)	1620-2 712 (800-2)	NA

EC-3, 28 MAR 2019 to 25 APR 2019

EC-3, 28 MAR 2019 to 25 APR 2019