

APP CRS 334°	Rwy Idg 3398
	TDZE 979
	Apt Elev 979

RNAV (GPS) RWY 33

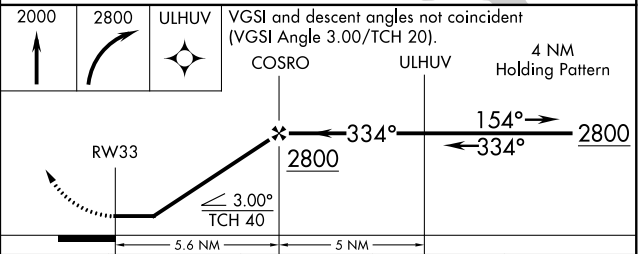
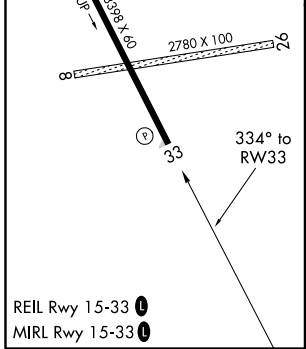
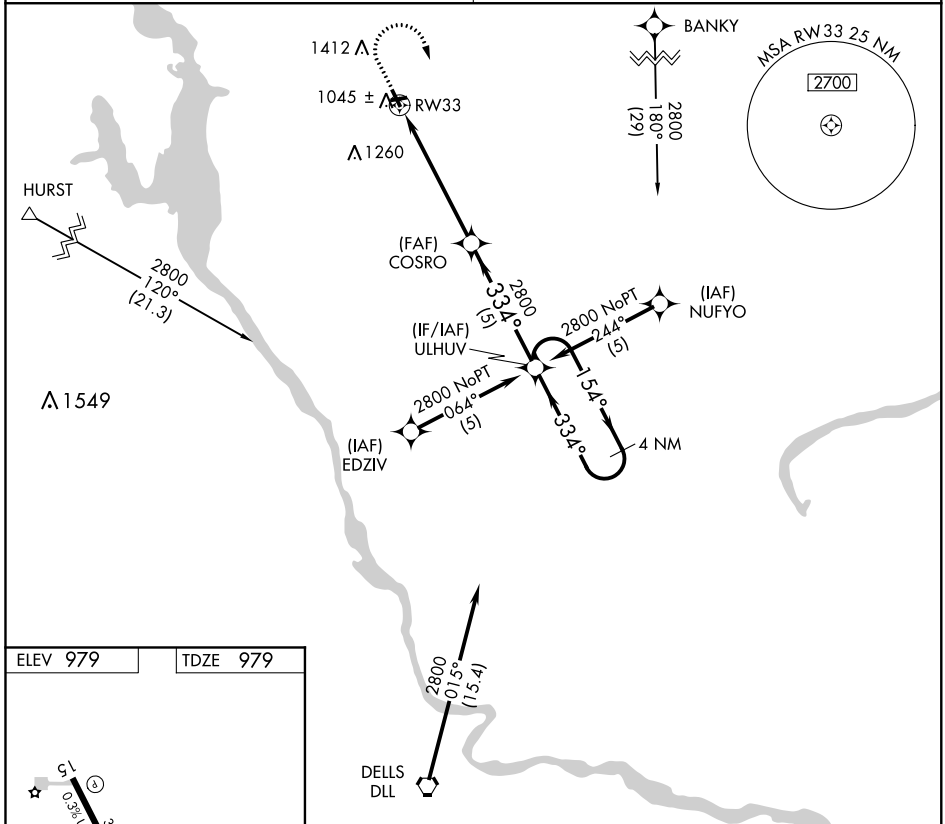
ADAMS COUNTY LEGION FIELD (63C)

NA Procedure NA at night. Helicopter visibility reduction below 1 SM NA. Circling to Rwy 8/26 NA. DME/DME RNP-0.3 NA. Use Baraboo Wisconsin Dells altimeter setting.

MISSED APPROACH: Climb to 2000 then climbing right turn to 2800 direct ULHUV WP and hold.

VOLK APP CON★
135.25 244.875

CTAF
122.9



CATEGORY	A	B	C	D
LNAV MDA	1500-1	521 (600-1)		NA
CIRCLING	1640-1 661 (700-1)	1760-1¼ 781 (800-1¼)		NA

EC-3, 28 MAR 2019 to 25 APR 2019

EC-3, 28 MAR 2019 to 25 APR 2019