

**GALESBURG MUNI** (GBG)(KGBG) 3 SW UTC-6(-5DT) N40°56.28' W90°25.87'

CHICAGO

764 B NOTAM FILE GBG

H-5D, L-27B

RWY 03-21: H5792X150 (ASPH-PFC) S-47, D-57, 2D-85 HIRL

IAP

RWY 03: MALSRL. Tree.

RWY 21: REIL. VASI(V4L)—GA 3.0° TCH 55'. Tree.

RWY 10-28: H3600X100 (ASPH) S-30, D-40 MIRL

SERVICE: S4 FUEL 100LL, JETA 0X2 LGT HIRL Rwy 03-21 and MIRL Rwy 10-28 preset low ints ngt. To increase ints ngt and ACTIVATE HIRL Rwy 03-21 and MIRL Rwy 10-28 day MALSRL Rwy 03; REIL and VASI Rwy 21—CTAF.

AIRPORT REMARKS: Attended Mon-Fri 1200-0230Z‡, Sat-Sun 1300-0100Z‡. Self serve 100LL avbl 24 hrs.

AIRPORT MANAGER: (309) 342-3134

WEATHER DATA SOURCES: AWOS-3 118.975 (309) 343-3711.

COMMUNICATIONS: CTAF/UNICOM 123.0

RCO 122.1R 109.8T (KANKAKEE RADIO)

® QUAD CITY APP/DEP CON 133.275 (1130-0430Z‡)

® CHICAGO CENTER APP/DEP CON 135.6 (0430-1130Z‡)

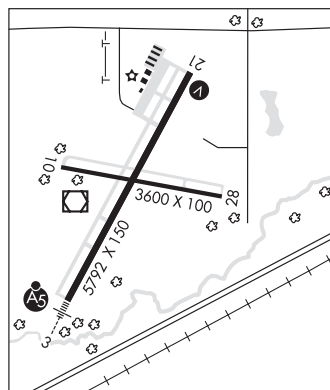
CLNC DEL 120.7

AIRSPACE: CLASS E svc 1130-0430Z‡; other times CLASS G.

RADIO AIDS TO NAVIGATION: NOTAM FILE GBG.

(T) VOR/DME 109.8 GBG Chan 35 N40°56.24' W90°26.07' at fld. 760/3E.

ILS 110.7 I-GBG Rwy 03. Unmonitored.



**GALT FLD** (See GREENWOOD/WONDER LAKE on page 61)

**GEN-AIRPARK** (See GENESEO on page 59)

**GENERAL DOWNING - PEORIA INTL** (See PEORIA on page 76)

## GENESEO

**GEN-AIRPARK** (3G8) 2 SE UTC-6(-5DT) N41°26.39' W90°06.60'

CHICAGO

645 NOTAM FILE IKK

RWY 09-27: 2568X120 (TURF) LIRL(NSTD)

RWY 09: Thld dspcd 193'. Road.

RWY 27: Thld dspcd 285'. Road.

SERVICE: LGT Rwy 09-27 NSTD LIRL; NSTD spacing and ints.

AIRPORT REMARKS: Attended irregularly. Parachute activity on and invof arpt. Rwy 09-27 dspcd thld marked with a 10' strip of gravel outward from both sides of rwy. Obst fence 30' north apch end Rwy 09 (6' AGL) not lgtd.

AIRPORT MANAGER: (309) 912-0437

COMMUNICATIONS: CTAF 122.9

**GILMY** N42°06.86' W89°05.92' NOTAM FILE RFD.

CHICAGO

NDB (LOMW) 275 RF 004° 4.9 NM to Chicago/Rockford Intl. 794/3W.

**GOOEY** N38°28.68' W89°44.28' NOTAM FILE BLV.

ST LOUIS

NDB (LOMW) 385 JD 313° 6.1 NM to Scott AFB/Midamerica. 422/2W.