


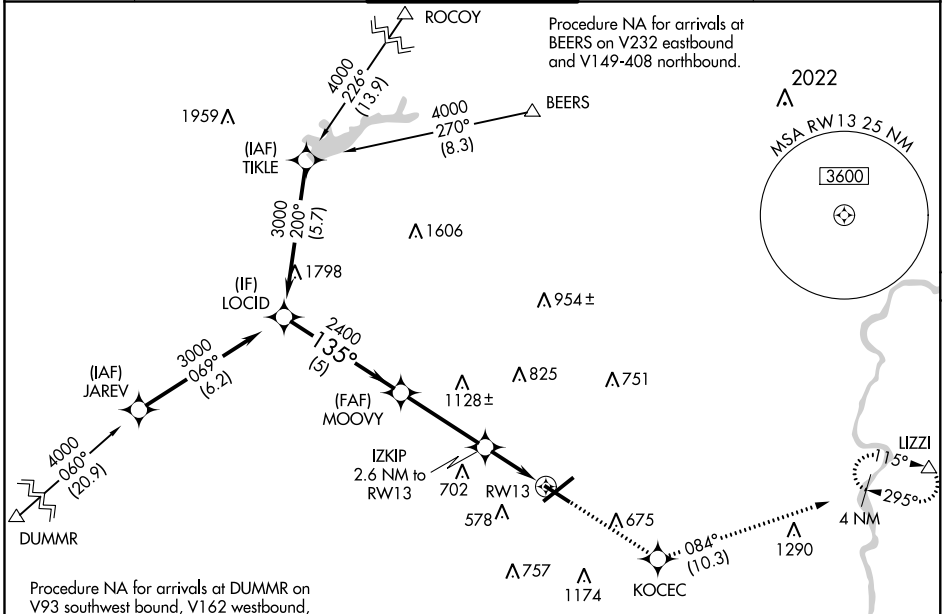
WAAS CH <b>82532</b> <b>W13A</b>	APP CRS <b>135°</b>	Rwy Idg TDZE <b>386</b> Apt Elev <b>394</b>	<b>5800</b>
--	------------------------	---	-------------

# RNAV (GPS) RWY 13

LEHIGH VALLEY INTL (ABE)

<p><b>▼</b> For uncompensated Baro-VNAV systems, LNAV/VNAV NA below -16°C (4°F) or above 54°C (130°F). DME/DME RNP-0.3 NA. For inoperative MALS/R, increase LNAV Cat C/D visibility to 1½ mile.</p>	<p>MALS/R</p> 	<p>MISSED APPROACH: Climb to 3000 direct KOCEC and on track 084° to LIZZI and hold.</p>
---	---	---

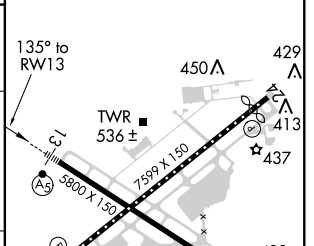
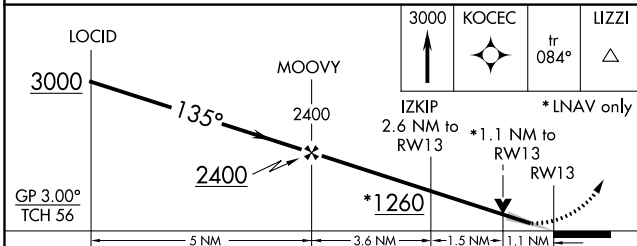
<p>ATIS <b>126.975</b></p>	<p>ALLENTOWN APP CON <b>119.65 124.45 351.8</b></p>	<p>ALLENTOWN TOWER <b>120.5 257.95</b></p>	<p>GND CON <b>121.9 257.95</b></p>	<p>CLNC DEL <b>124.05 257.95</b></p>
--------------------------------	---	--	--	--



NE-4, 25 APR 2019 to 23 MAY 2019

NE-4, 25 APR 2019 to 23 MAY 2019

ELEV 394	<b>D</b> TDZE 386
----------	-------------------



CATEGORY	A	B	C	D
LPV DA		586-½	200 (200-½)	
LNAV/VNAV DA		700-½	314 (400-½)	
LNAV MDA	800-½	414 (500-½)	800-¾	414 (500-¾)
<b>C</b> CIRCLING	900-1	506 (600-1)	1180-2¼ 786 (800-2¼)	1600-3 1206 (1300-3)

