

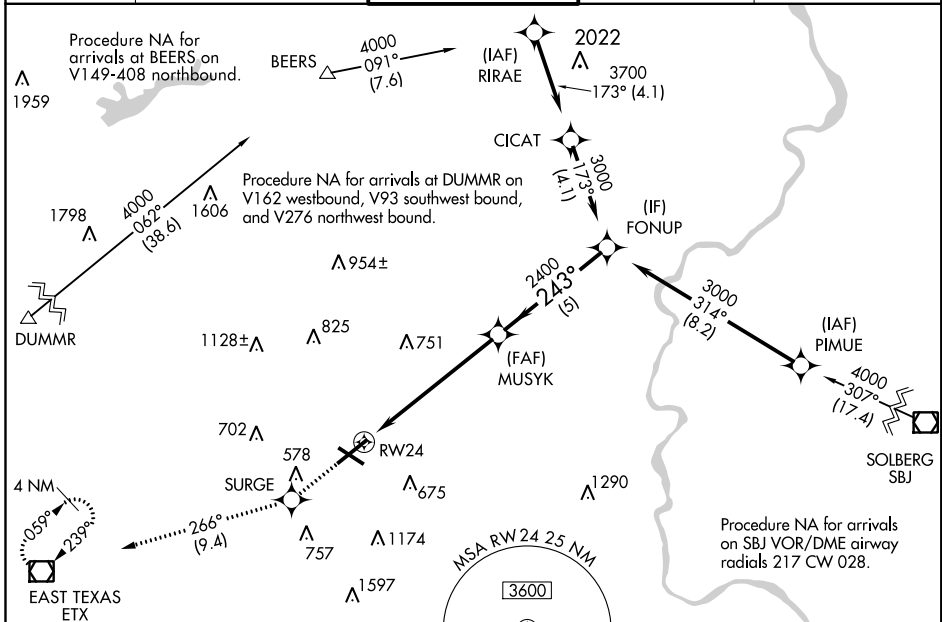
WAAS CH <b>40332</b> <b>W24A</b>	APP CRS <b>243°</b>	Rwy Idg TDZE Apt Elev	<b>7089</b> <b>387</b> <b>394</b>
--	------------------------	-----------------------------	---

# RNAV (GPS) RWY 24

LEHIGH VALLEY INTL (A,B,E)

RNP APCH.	<p><b>▽</b> For uncompensated Baro-VNAV systems, LNAV/VNAV <b>▲</b> NA below -8°C (18°F) or above 54°C (130°F).</p>	MISSED APPROACH: Climb to 3000 direct SURGE and on track 266° to ETX VOR/DME and hold.
-----------	---	--

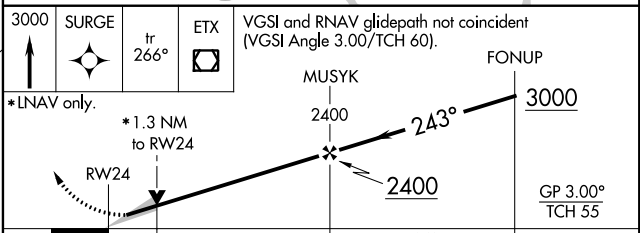
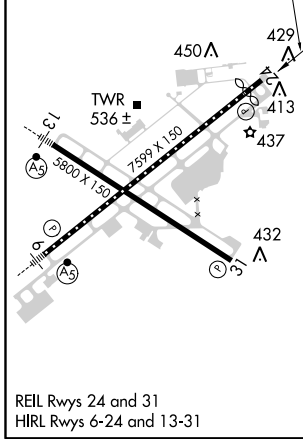
ATIS <b>126.975</b>	ALLENTOWN APP CON <b>119.65 124.45 351.8</b>	ALLENTOWN TOWER <b>120.5 257.95</b>	GND CON <b>121.9 257.95</b>	CLNC DEL <b>124.05 257.95</b>
------------------------	---	--	--------------------------------	----------------------------------



NE-4, 25 APR 2019 to 23 MAY 2019

NE-4, 25 APR 2019 to 23 MAY 2019

ELEV 394	<b>D</b>	TDZE 387
----------	----------	----------



CATEGORY	A	B	C	D
LPV DA	587/40		200 (200-3/4)	
LNAV/VNAV DA	783-1 1/4		396 (400-1 1/4)	
LNAV MDA	860/55 473 (500-1)		860-1 3/8 473 (500-1 3/8)	
<b>C</b> CIRCLING	900-1 506 (600-1)		1180-2 1/4 786 (800-2 1/4) 1600-3 1206 (1300-3)	