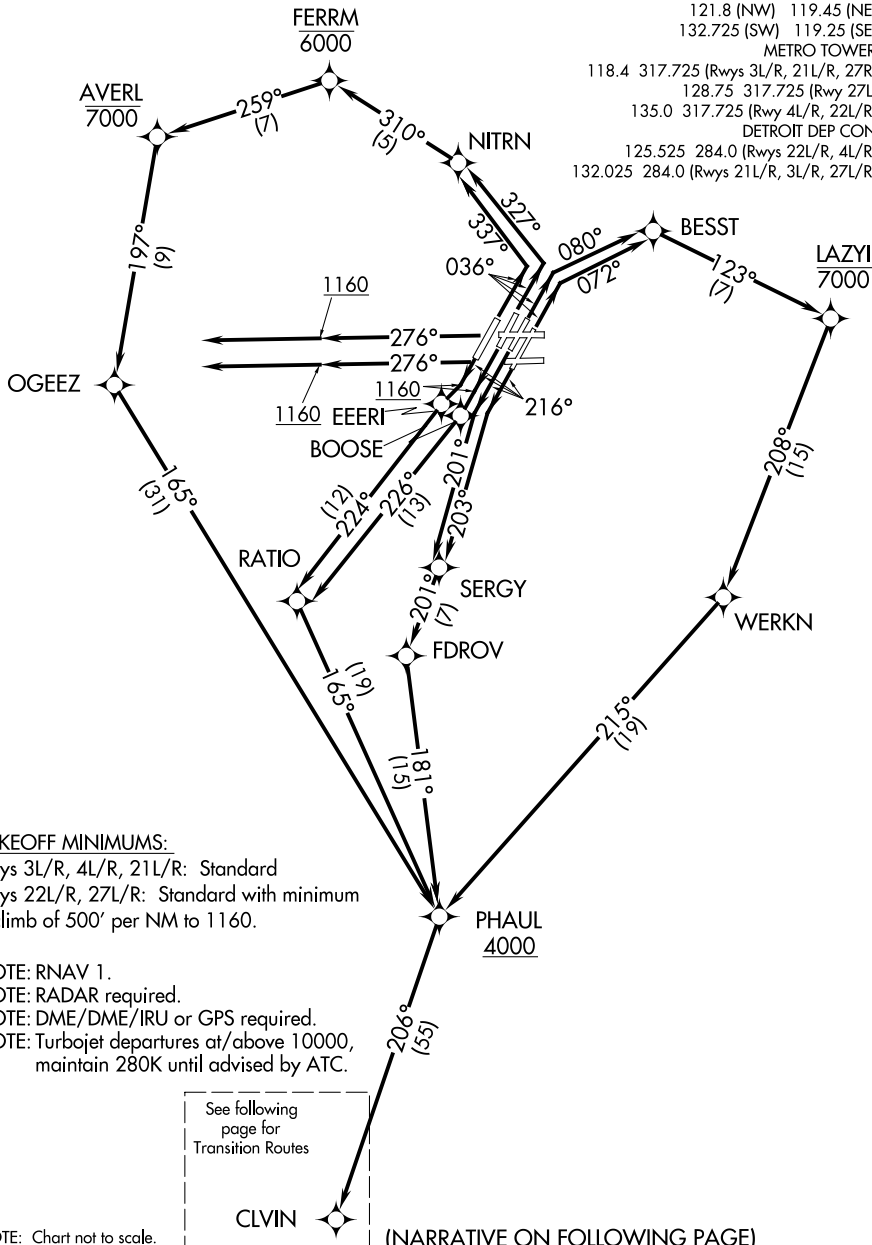


CLVIN ONE DEPARTURE (RNAV)

**TOP ALTITUDE:
ASSIGNED BY ATC**

D-ATIS 118.125
 CLNC DEL 120.65
 CPDLC
 GND CON
 121.8 (NW) 119.45 (NE)
 132.725 (SW) 119.25 (SE)
 METRO TOWER
 118.4 317.725 (Rwys 3L/R, 21L/R, 27R)
 128.75 317.725 (Rwy 27L)
 135.0 317.725 (Rwy 4L/R, 22L/R)
 DETROIT DEP CON
 125.525 284.0 (Rwys 22L/R, 4L/R)
 132.025 284.0 (Rwys 21L/R, 3L/R, 27L/R)



TAKEOFF MINIMUMS:

Rwys 3L/R, 4L/R, 21L/R: Standard
 Rwys 22L/R, 27L/R: Standard with minimum
 climb of 500' per NM to 1160.

- NOTE: RNAV 1.
- NOTE: RADAR required.
- NOTE: DME/DME/IRU or GPS required.
- NOTE: Turbojet departures at/above 10000, maintain 280K until advised by ATC.

NOTE: Chart not to scale.

(NARRATIVE ON FOLLOWING PAGE)

EC-1, 25 APR 2019 to 23 MAY 2019

EC-1, 25 APR 2019 to 23 MAY 2019