

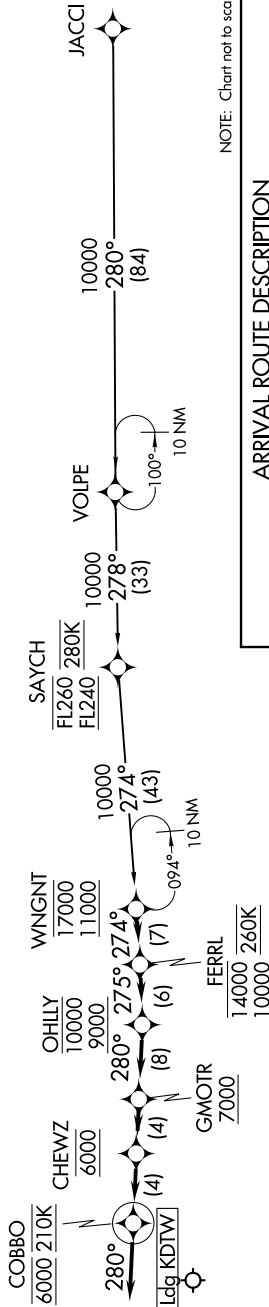
FERRL ONE ARRIVAL (RNAV)

AL-119 (FAA)

DETROIT, MICHIGAN

NOTE: RADAR required.
 NOTE: RNAV 1.
 NOTE: DME/DME/IRU or GPS required.
 NOTE: Expect Rwy 21L.
 NOTE: Jet aircraft descend via Mach number until intercepting 280K. Maintain 280K until slowed by the STAR.
 NOTE: For use when DTW is in south flow. When DTW is in north flow, file and expect the WNGNT RNAV STAR.

D-ATIS
 133.675
 DETROIT APP CON
 126.225 284.0



NOTE: Chart not to scale.

ARRIVAL ROUTE DESCRIPTION

JACCI TRANSITION (JACCI.FERRL1)

From WNGNT on track 274° to cross FERRL between 10000 and 14000 and at 260K, then on track 275° to cross OHLLY between 9000 and 10000, then on track 280° to cross GMOTR at or above 7000, then on track 280° to cross CHEWZ at 6000, then on track 280° to cross COBBO at 6000 and at 210K, then on track 280°. Expect RADAR vectors to final approach course.

LOST COMMUNICATIONS:

From COBBO, execute ILS Rwy 21L approach.

FERRL ONE ARRIVAL (RNAV)