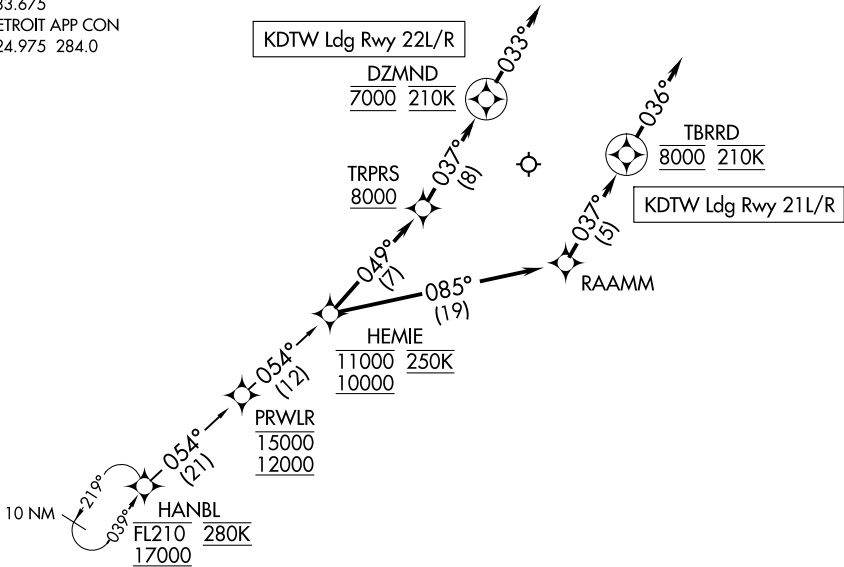


HANBL ONE ARRIVAL (RNAV) Arrival Routes

D-ATIS
133.675
DETROIT APP CON
124.975 284.0



- NOTE: RADAR required.
- NOTE: RNAV 1.
- NOTE: DME/DME/IRU or GPS required.
- NOTE: Use Runway 22R transition or as assigned by ATC. Expect runway assignment from Detroit TRACON prior to PRWLR.
- NOTE: For use when DTW is in south flow. When DTW is in north flow, file and expect the LECTR RNAV STAR.
- NOTE: TORRR Transition for use by CVG/DAY/SDF/LEX terminal area departures at or below FL210 only and ATC use as assigned.

NOTE: Chart not to scale.

ARRIVAL ROUTE DESCRIPTION

From HANBL on track 054° to cross PRWLR between 12000 and 15000, then on track 054° to cross HEMIE between 10000 and 11000 and at 250K.

LANDING RUNWAY 21L/R: From HEMIE on track 085° to RAAMM, then on track 037° to cross TBRRD at 8000 and at 210K, then on track 036°. Expect RADAR vectors to final approach course.

LANDING RUNWAY 22L/R: From HEMIE on track 049° to cross TRPRS at or above 8000, then on track 037° to cross DZMND at 7000 and at 210K, then on track 033°. Expect RADAR vectors to final approach course.

HANBL ONE ARRIVAL (RNAV) Arrival Routes