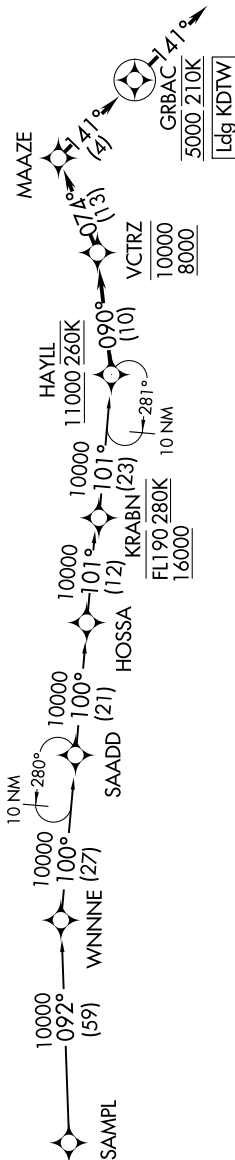


HAYLL TWO ARRIVAL (RNAV)

EC-1, 25 APR 2019 to 23 MAY 2019

D-ATIS
133.675
DETROIT APP CON
124.975 284.0



- NOTE: RADAR required.
- NOTE: RNAV 1.
- NOTE: DME/DME/IRU or GPS required.
- NOTE: Expect Rwy 4L.
- NOTE: For use when DTW landing North. When DTW landing South, file and expect the VCTRZ RNAV STAR.
- NOTE: For use by flights departing MDW, SBN, AZO, MCI, LAS, LAX, PHX, SAN, SNA airports only, or as assigned by ATC.

ARRIVAL ROUTE DESCRIPTION

HOSSA TRANSITION (HOSSA.HAYLL2)
SAMPL TRANSITION (SAMPL.HAYLL2)

From HAYLL on track 090° to cross VCTRZ between 8000 and 10000, then on track 074° to MAAZE, then on track 141° to cross GRBAC at 5000 and at 210K, then on track 141°. Expect radar vectors to final approach course.

LOST COMMUNICATIONS

From GRBAC, execute RNAV (GPS) Y RWY 4L or ILS Y RWY 4 L approach.

NOTE: Chart not to scale.

EC-1, 25 APR 2019 to 23 MAY 2019