

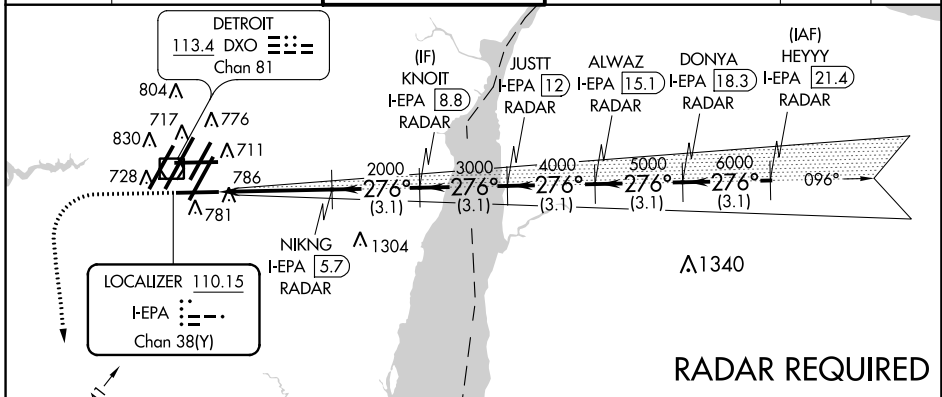
LOC/DME I-EPA 110.15 Chan 38(Y)	APP CRS 276°	Rwy Ldg TDZE Apt Elev	8500 630 645
---	------------------------	-----------------------------	---

ILS RWY 27L (SA CAT I & II)

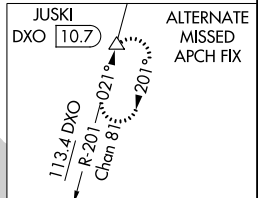
DETROIT METROPOLITAN WAYNE COUNTY (DTW)

<p>▼ DME or RADAR required. Simultaneous approach authorized. SA Cat I: Requires specific OPSPEC, MSPEC, or LOA approval and use of HUD to DH. SA Cat II: Reduced lighting: Requires specific OPSPEC, MSPEC, or LOA approval and use of Autoland or HUD to touchdown.</p>	<p>MALSR AS</p>	<p>MISSED APPROACH: Climb to 1100 then climbing left turn to 4000 on heading 180° and CRL VOR/DME R-041 to CRL VOR/DME and hold, continue climb-in-hold to 4000.</p>
---	---------------------	--

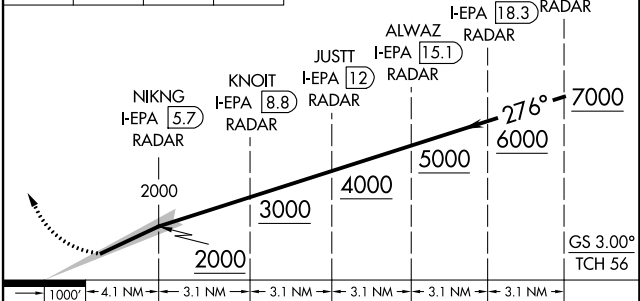
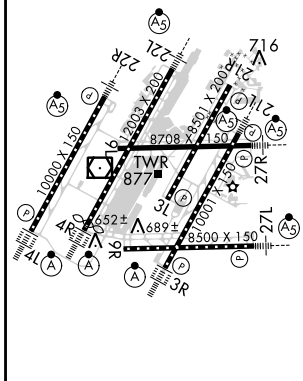
D-ATIS 133.675	DETROIT APP CON 124.05 284.0	METRO TOWER 128.75 317.725	GND CON 121.8 (NW) 119.45 (NE) 132.725 (SW) 119.25 (SE)	CLNC DEL 120.65	CPDLC
--------------------------	--	--------------------------------------	---	---------------------------	-------



RADAR REQUIRED



ELEV 645	D TDZE 630	1100	4000	hdg 180°	CRL R-041	VGSi and ILS glidepath not coincident (VGSi Angle 3.00/TCH 71).
-----------------	--------------------------	------	------	----------	-----------	---



CATEGORY	A	B	C	D
S-ILS 27L	SA CAT I	RA 146/16	150 DA 780	
S-ILS 27L	SA CAT II	RA 96/16	100 DA 730	

SA CATEGORY I & II ILS SPECIAL AIRCREW & AIRCRAFT CERTIFICATION REQUIRED

EC-1, 25 APR 2019 to 23 MAY 2019

EC-1, 25 APR 2019 to 23 MAY 2019