

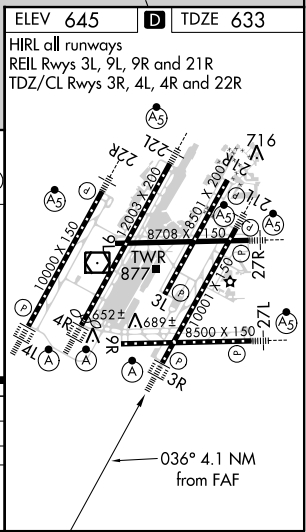
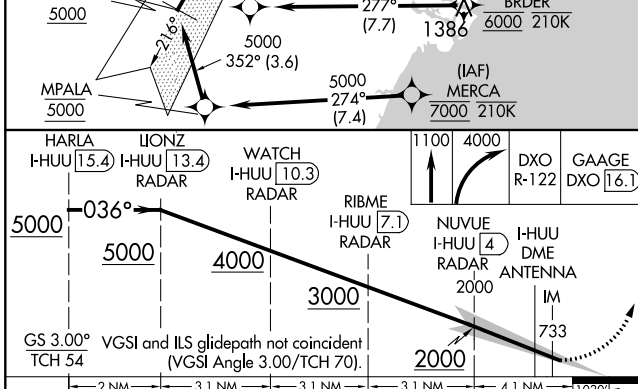
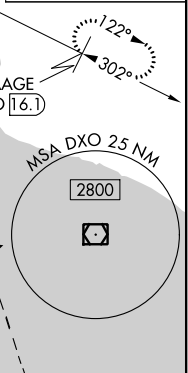
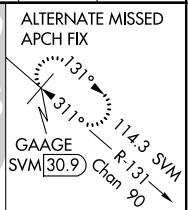
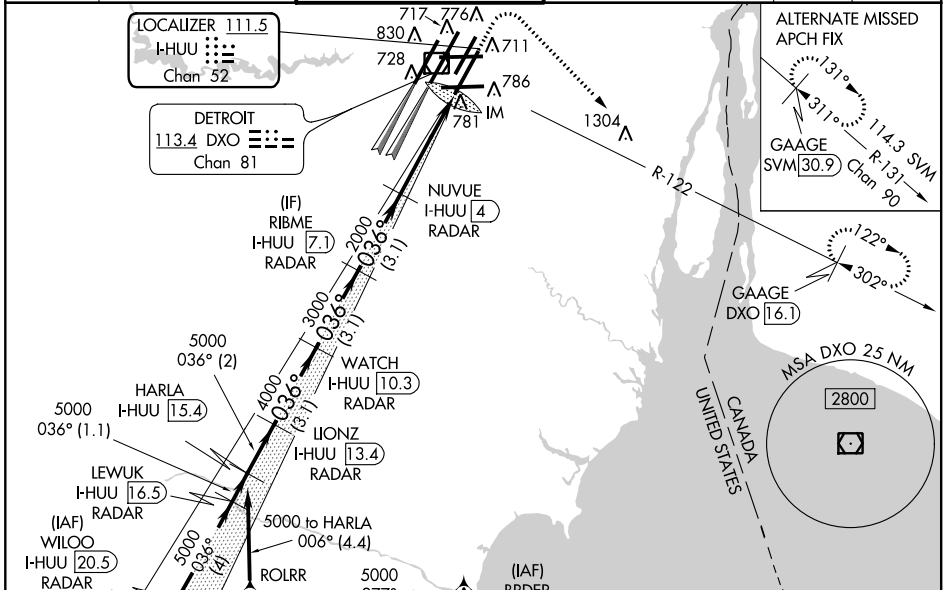
LOC/DME I-HUU <b>111.5</b> Chan <b>52</b>	APP CRS <b>036°</b>	Rwy Idg <b>10001</b> TDZE <b>633</b> Apt Elev <b>645</b>
---	------------------------	--

# ILS RWY 3R (CAT II & III)

DETROIT METROPOLITAN WAYNE COUNTY (DTW)

RNAV 1-GPS. MERCIA and BRDER: RNAV 1-DME/DME/IRU or GPS required. Aircraft not DME/DME/IRU or GPS equipped - RADAR required for procedure entry.	ALSF-2 	MISSED APPROACH: Climb to 1100 then climbing right turn to 4000 on DXO VOR/DME R-122 to GAAGE/DXO 16.1 DME and hold.
<p>Simultaneous approach authorized. DME required. RVR 1000 authorized with specific OPSPEC, MSPEC, or LOA approval and use of autoland or HUD to touchdown.</p>		

D-ATIS <b>133.675</b>	DETROIT APP CON <b>125.15 284.0</b>	METRO TOWER <b>118.4 317.725</b>	GND CON <b>121.8 (NW) 119.45 (NE)</b> <b>132.725 (SW) 119.25 (SE)</b>	CLNC DEL <b>120.65</b>	CPDLC
--------------------------	--	-------------------------------------	---	---------------------------	-------



GS 3.00° VGSi and ILS glidepath not coincident (VGSi Angle 3.00/TCH 70).	2 NM	3.1 NM	3.1 NM	3.1 NM	4.1 NM	10300'
CATEGORY	A	B	C	D		
S-ILS 3R	CAT II RA 101/12		100 DA 733			
S-ILS 3R	CAT III		RVR 06			

**CATEGORY II & III ILS - SPECIAL AIRCREW & AIRCRAFT CERTIFICATION REQUIRED**

EC-1, 25 APR 2019 to 23 MAY 2019

EC-1, 25 APR 2019 to 23 MAY 2019