

# ILS PRM RWY 22L (CLOSE PARALLEL)

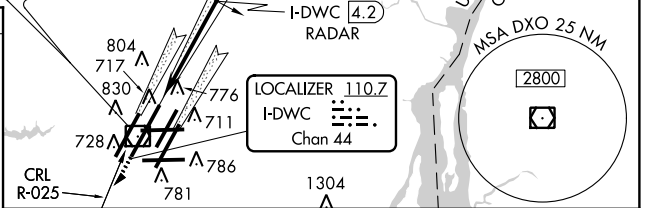
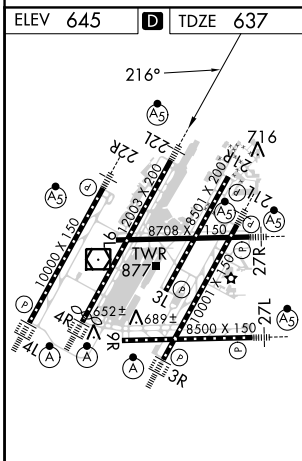
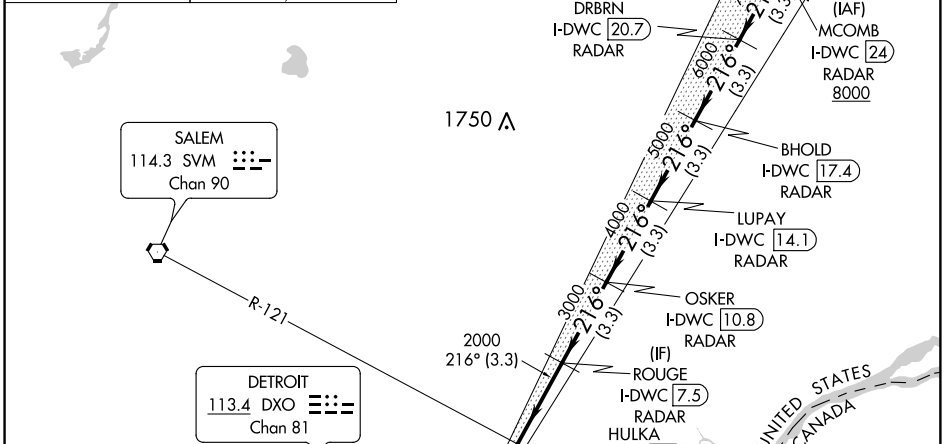
DETROIT METROPOLITAN WAYNE COUNTY (DTW)

LOC/DME I-DWC <b>110.7</b> Chan <b>44</b>	APP CRS <b>216°</b>	Rwy Idg TDZE Apt Elev	<b>12003</b> <b>637</b> <b>645</b>
---	------------------------	-----------------------------	--

RNAV 1-GPS.  
 RNAV 1-DME/DME/IRU or RADAR required for procedure entry. DME or RADAR required.  
 Simultaneous approach authorized. Use of FD or AP required during simultaneous operations. Dual VHF comm required. See additional requirements on AAUP.  
 Procedure NA when glide slope not available.  
 \*RVR 1800 authorized with use of FD or AP or HUD to DA.

MALS R  
 MISSED APPROACH:  
 Climb to 4000 on heading 216° and CRL VOR/DME R-025 to CRL VOR/DME and hold, continue climb-in-hold to 4000.

D-ATIS <b>133.675</b>	DETROIT APP CON <b>124.05 284.0</b>	METRO TOWER <b>128.125 317.725</b> <b>PRM 135.775</b>	GND CON <b>121.8</b> (NW) <b>119.45</b> (NE) <b>119.25</b> (SE)	CLNC DEL <b>120.65</b>	CPDLC
--------------------------	--	---	--	---------------------------	-------



4000	CRL R-025	CRL	ROUGE I-DWC 7.5	OSKER I-DWC 10.8	LUPAY I-DWC 14.1	BHOLD I-DWC 17.4	DRBRN I-DWC 20.7	MCOMB I-DWC 24		
2000	I-DWC DME ANTENNA	HULKA I-DWC 4.2	RADAR	RADAR	RADAR	RADAR	RADAR	RADAR		
3000										
4000										
5000										
6000										
7000										
8000										
4.3 NM		3.3 NM		3.3 NM		3.3 NM		3.3 NM		
CATEGORY	A	B		C		D				
S-ILS 22L*	837/24		200 (200-1/2)							

EC-1, 25 APR 2019 to 23 MAY 2019

EC-1, 25 APR 2019 to 23 MAY 2019