

ILS PRM Y RWY 22R (CLOSE PARALLEL)


DETROIT METROPOLITAN WAYNE COUNTY (DTW)

LOC/DME I-BZB	APP CRS	Rwy Idg	10000
111.75	213°	TDZE	642
Chan 54 (Y)		Apt Elev	645

RNAV 1-GPS, HRRON and VALLI: RNAV 1-DME/DME/IRU or GPS required.
 Aircraft not DME/DME/IRU or GPS equipped - RADAR required for procedure entry.

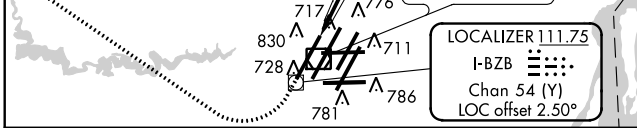
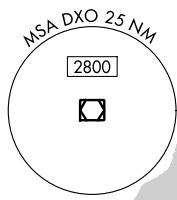
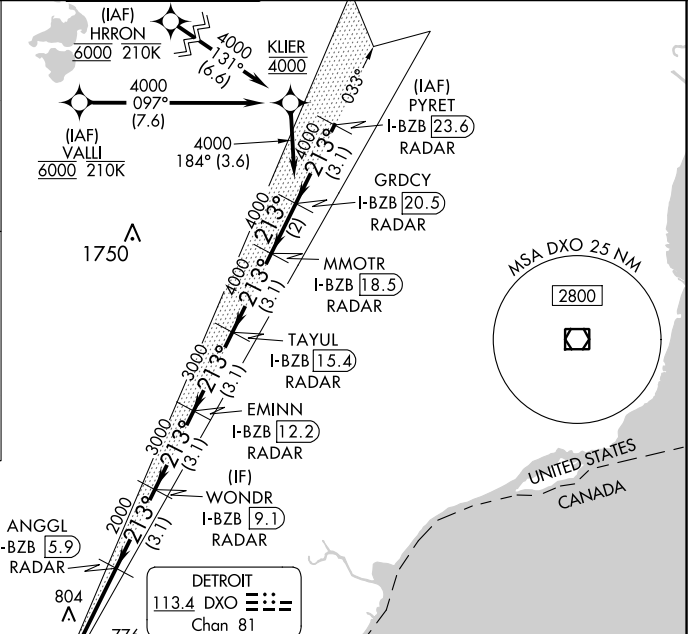
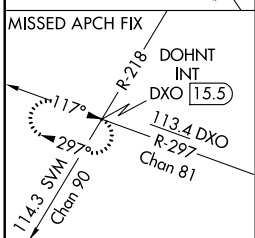
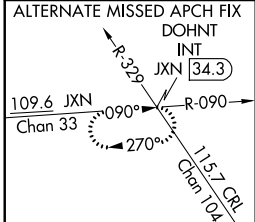
Simultaneous approach authorized.
 Procedure NA when glide slope not available. (ILS procedures only).
 Dual VHF Comm required. See additional requirements on AAUP.

MALS R

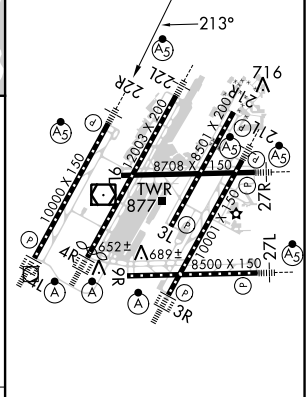
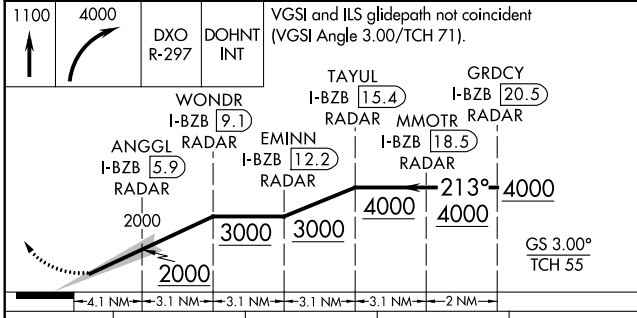


MISSED APPROACH: Climb to 1100 then climbing right turn to 4000 on DXO VOR/DME R-297 to DOHNT INT/DXO 15.5 DME and hold.

D-ATIS 133.675	DETROIT APP CON 124.05 284.0	METRO TOWER 135.0 317.725 PRM 127.05	GND CON 121.8 (NW) 119.45 (NE) 132.725 (SW) 119.25 (SE)	CLNC DEL 120.65	CPDLC
--------------------------	--	---	---	---------------------------	-------



ELEV 645	D	TDZE 642
----------	---	----------



CATEGORY	A	B	C	D
S-ILS 22R		892/24	250 (300-1/2)	

TDZ/CL Rwy 3R, 4L, 4R and 22R
 REIL Rwy 3L, 9L, 9R and 21R
 HIRL all runways

EC-1, 25 APR 2019 to 23 MAY 2019

EC-1, 25 APR 2019 to 23 MAY 2019