

LOC/DME I-ALA 111.75	APP CRS 038°	Rwy Idg TDZE Apt Elev	10000 645 645
Chan 54 (Y)			

ILS PRM Y RWY 4L (CLOSE PARALLEL)

DETROIT METROPOLITAN WAYNE COUNTY (DTW)

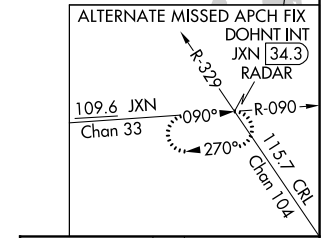
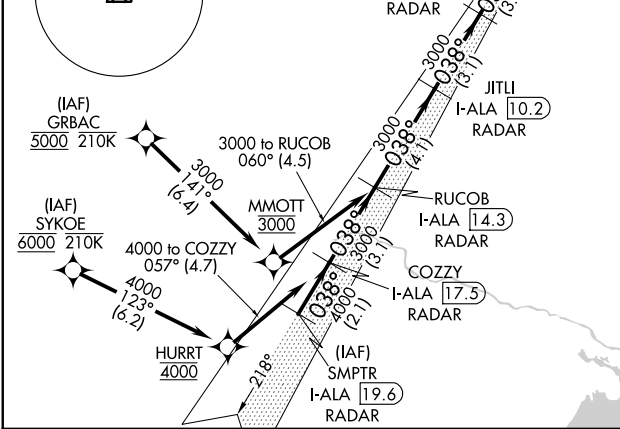
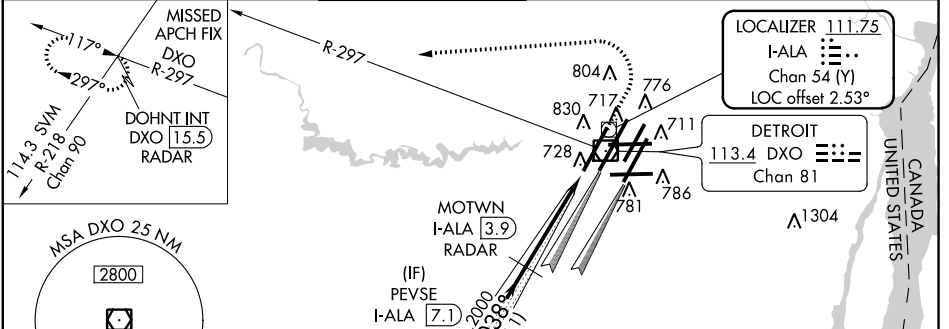
RADAR required for procedure entry.
DME or RADAR required.
RNAV 1-DME/DME/IRU or GPS required for procedure entry at SYKOE and GRBAC.

Simultaneous approach authorized. Use of FD or AP required during simultaneous operations. Dual VHF comm required. See additional requirements on AAUP.
Rwy 4L and Rwy 4R separated by 3000 feet centerline to centerline.

ALSF-2

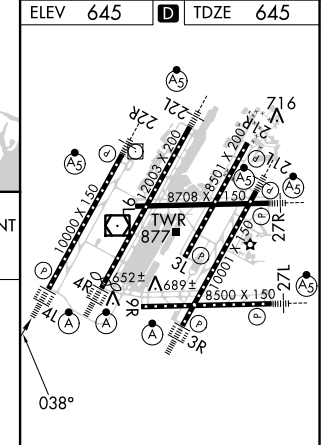
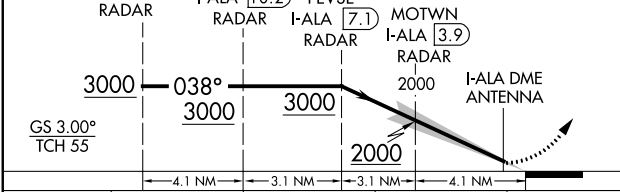
MISSED APPROACH: Climb to 1100 then climbing left turn to 4000 on DXO VOR/DME R-297 to DOHNT INT/DXO 15.5 DME and hold.

D-ATIS 133.675	DETROIT APP CON 124.05 284.0	METRO TOWER 135.0 317.725 PRM 127.05	GND CON 121.8 (NW) 119.45 (NE) 132.725 (SW) 119.25 (SE)	CLNC DEL 120.65	CPDLC
--------------------------	--	--	---	---------------------------	-------



VGSI and ILS glidepath not coincident (VGSI Angle 3.00/TCH 71).

RUCOB I-ALA 14.3 RADAR	JITLI I-ALA 10.2 RADAR	PEVSE I-ALA 7.1 RADAR	MOTWN I-ALA 3.9 RADAR
-------------------------------	-------------------------------	------------------------------	------------------------------



CATEGORY	A	B	C	D
S-ILS 4L	895/24 250 (300-1/2)			

EC-1, 25 APR 2019 to 23 MAY 2019

EC-1, 25 APR 2019 to 23 MAY 2019