

DETROIT, MICHIGAN

AL-119 (FAA)

19115

| | | | |
|--------------------------------|------------------------|-----------------------------|--|
| LOC/DME I-JKI 111.95 | APP CRS 216° | Rwy Idg TDZE Apt Elev | 10000 642 645 |
| Chan 56 (Y) | | | |

ILS PRM Z RWY 22R (SA CAT I & II) (CLOSE PARALLEL)

DETROIT METROPOLITAN WAYNE COUNTY (DTW)

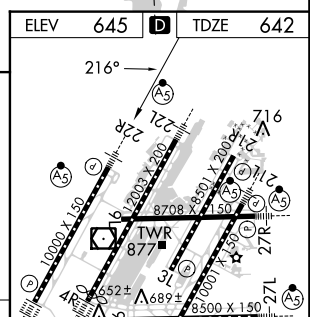
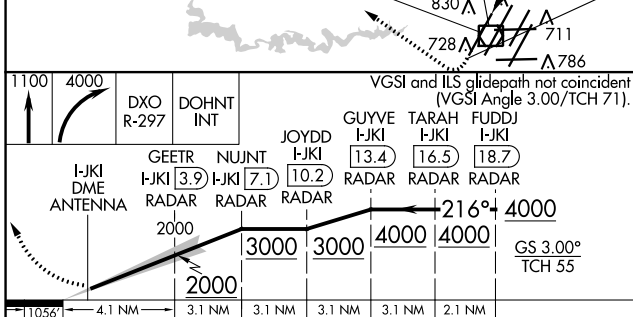
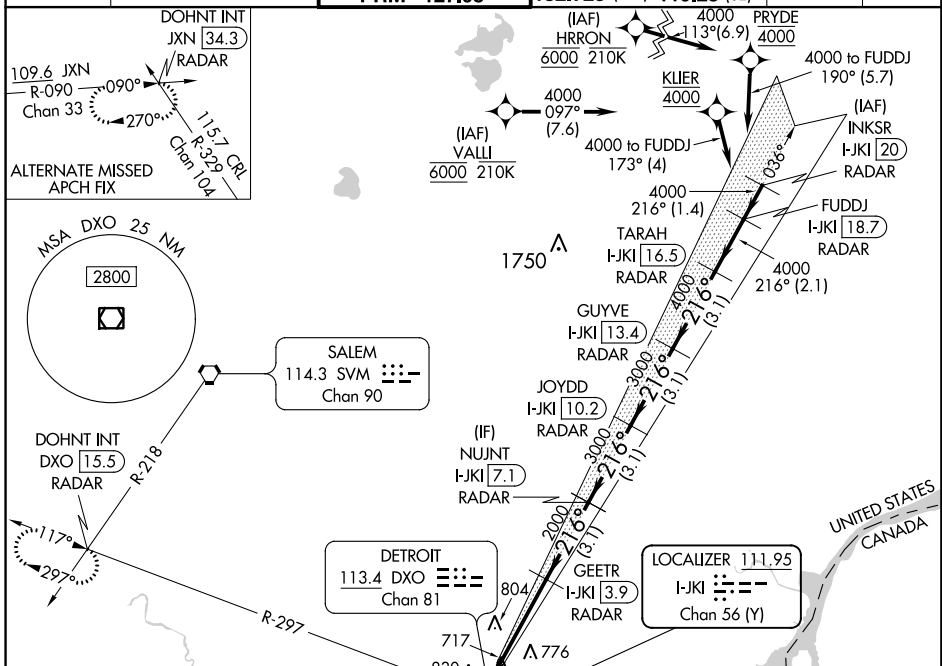
RNAV 1-GPS, HRRON and VALLI: RNAV 1-DME/DME/IRU or GPS required.
Aircraft not DME/DME/IRU or GPS equipped - RADAR required for procedure entry.

Simultaneous approach authorized. Use of FD or AP required during simultaneous operations. Dual VHF Comm required. See additional requirements on AAUP.
SA CAT I: Requires specific OPSPEC, MSPEC, or LOA approval and use of HUD to DH.
SA CAT II: Reduced lighting: Requires specific OPSPEC, MSPEC, or LOA approval and use of autoland or HUD to touchdown.

MALSR

MISSED APPROACH: Climb to 1100 then climbing right turn to 4000 on DXO VOR/DME R-297 to DOHNT INT/ DXO 15.5 DME/RADAR and hold.

| | | | | | |
|--------------------------|--|--|---|---------------------------|-------|
| D-ATIS 133.675 | DETROIT APP CON 124.05 284.0 | METRO TOWER 135.0 317.725 PRM 127.05 | GND CON 121.8 (NW) 119.45 (NE) 132.725 (SW) 119.25 (SE) | CLNC DEL 120.65 | CPDLC |
|--------------------------|--|--|---|---------------------------|-------|



| | | | | |
|-----------|-----------|-----------|------------|---|
| CATEGORY | A | B | C | D |
| S-ILS 22R | SA CAT I | RA 148/14 | 150 DA 792 | |
| S-ILS 22R | SA CAT II | RA 98/12 | 100 DA 742 | |

TDZ/CL Rwy's 3R, 4L, 4R and 22R
REIL Rwy's 3L, 9L, 9R and 21R
HIRL all Rwy's

SA CATEGORY I & II ILS - SPECIAL AIRCREW & AIRCRAFT CERTIFICATION REQUIRED

DETROIT, MICHIGAN

42°13'N-83°21'W

DETROIT METROPOLITAN WAYNE COUNTY (DTW)

Orig-A 25APR19

ILS PRM Z RWY 22R (SA CAT I & II)(CLOSE PARALLEL)

EC-1, 25 APR 2019 to 23 MAY 2019

EC-1, 25 APR 2019 to 23 MAY 2019