

LOC/DME I-JKI <b>111.95</b> Chan <b>56</b> (Y)	APP CRS <b>216°</b>	Rwy ldg TDZE <b>642</b> Apt Elev <b>645</b>	<b>10000</b>
--	------------------------	---	--------------

# ILS Z RWY 22R (SA CAT I & II)

## DETROIT METROPOLITAN WAYNE COUNTY (DTW)

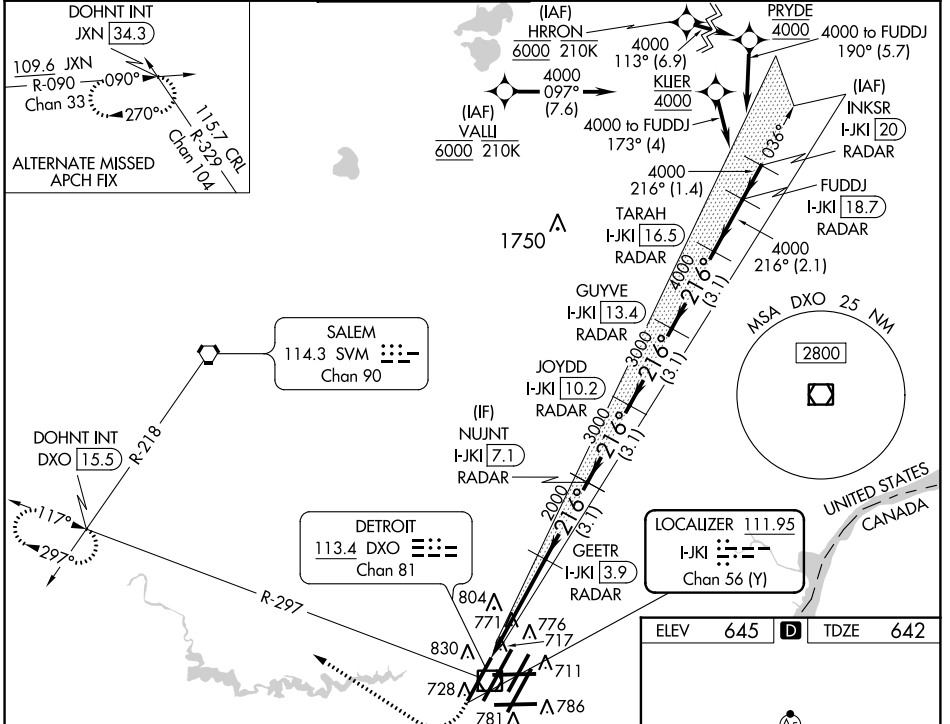
RNAV 1-GPS, HRRON and VALLI: RNAV 1-DME/DME/IRU or GPS required.  
Aircraft not DME/DME/IRU or GPS equipped - RADAR required for procedure entry.

MALSR

MISSED APPROACH: Climb to 1100 then climbing right turn to 4000 on DXO VOR/DME R-297 to DOHNT INT/DXO 15.5 DME and hold.

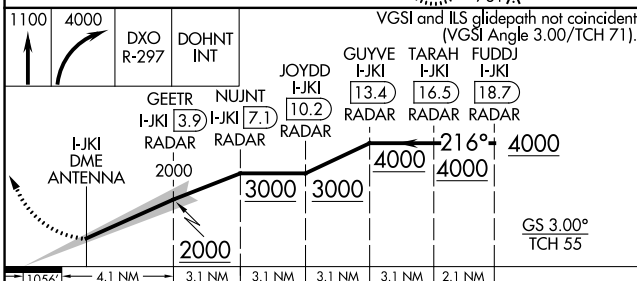
Simultaneous approach authorized. SA CAT I: Requires specific OPSPEC, MSPEC, or LOA approval and use of HUD to DH. SA CAT II: Reduced lighting: Requires specific OPSPEC, MSPEC, or LOA approval and use of autoland or HUD to touchdown.

D-ATIS <b>133.675</b>	DETROIT APP CON <b>124.05 284.0</b>	METRO TOWER <b>135.0 317.725</b>	GND CON <b>121.8</b> (NW) <b>119.45</b> (NE) <b>132.725</b> (SW) <b>119.25</b> (SE)	CLNC DEL <b>120.65</b>	CPDLC
--------------------------	--	-------------------------------------	---	---------------------------	-------

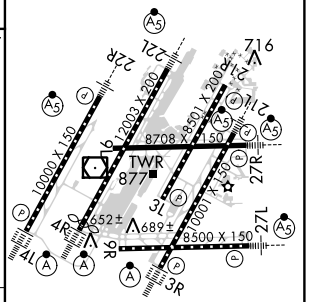


EC-1, 25 APR 2019 to 23 MAY 2019

EC-1, 25 APR 2019 to 23 MAY 2019



ELEV 645	TDZE 642
----------	----------



1056'	4.1 NM	3.1 NM	3.1 NM	3.1 NM	3.1 NM	2.1 NM
CATEGORY	A	B	C	D		
S-ILS 22R	SA CAT I	RA 148/14	150 DA 792			
S-ILS 22R	SA CAT II	RA 98/12	100 DA 742			

**SA CATEGORY I & II ILS - SPECIAL AIRCREW & AIRCRAFT CERTIFICATION REQUIRED**

TDZ/CL Rwys 3R, 4L, 4R and 22R  
REIL Rwys 3L, 9L, 9R and 21R  
HIRL all Rwys