

LOC/DME I-HJT <b>111.95</b> Chan <b>56(Y)</b>	APP CRS <b>036°</b>	Rwy Idg TDZE Apt Elev	<b>10000</b> <b>645</b> <b>645</b>
---	------------------------	-----------------------------	--

# ILS Z RWY 4L (CAT II & III)

DETROIT METROPOLITAN WAYNE COUNTY (DTW)

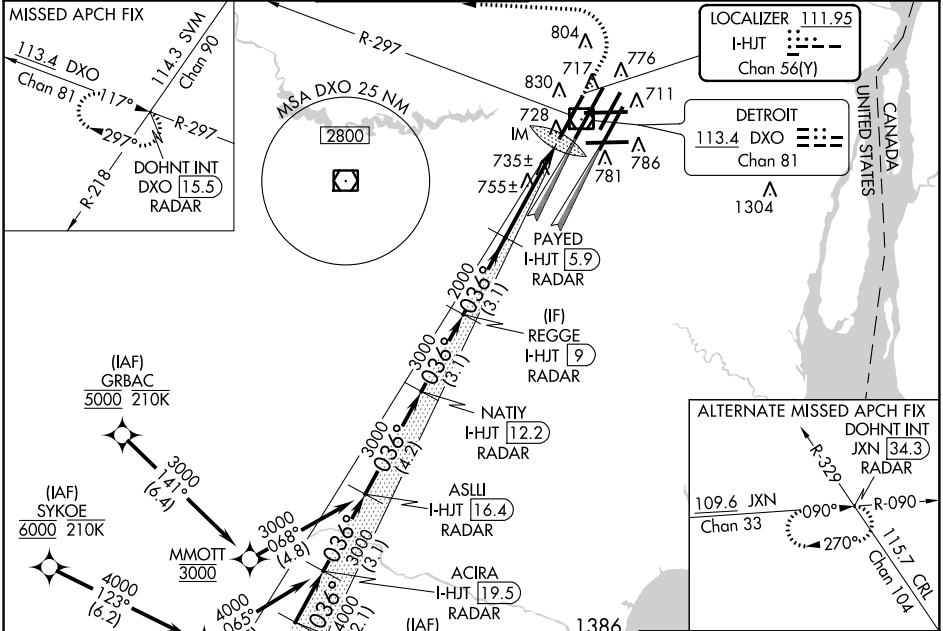
RADAR required for procedure entry. DME or RADAR required.  
RNAV 1-DME/DME/IRU or GPS required for procedure entry at SYKOE and GRBAC.

ALSF-2

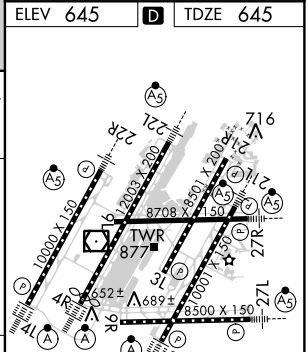
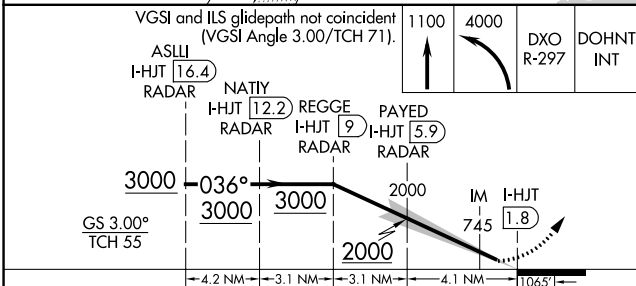
MISSED APPROACH: Climb to 1100 then climbing left turn to 4000 on DXO VOR/DME R-297 to DOHNT INT/DXO 15.5 DME/RADAR and hold.

Simultaneous approach authorized. CAT II: RVR 1000 authorized with specific OPSPEC, MSPEC, or LOA approval and use of Autoland or HUD to touchdown.

D-ATIS <b>133.675</b>	DETROIT APP CON <b>124.05 284.0</b>	METRO TOWER <b>135.0 317.725</b>	GND CON 121.8 (NW) 132.725 (SW)	NW <b>119.45</b> (NE) SE <b>119.25</b> (SE)	CLNC DEL <b>120.65</b>	CPDLC
--------------------------	--	-------------------------------------	---------------------------------------	--	---------------------------	-------



ELEV 645	TDZE 645
----------	----------



CATEGORY	A	B	C	D
S-ILS 4L	CAT II RA 101/12 100 DA 745			
S-ILS 4L	CAT III RVR 06			

## CATEGORY II & III ILS - SPECIAL AIRCREW & AIRCRAFT CERTIFICATION REQUIRED

TDZ/CL Rwy's 3R, 4L, 4R and 22R  
REIL Rwy's 3L, 9L, 9R and 21R  
HIRL all runways

EC-1, 25 APR 2019 to 23 MAY 2019

EC-1, 25 APR 2019 to 23 MAY 2019