

(BONZZ.KLYNK2) 19059

KLYNK TWO ARRIVAL (RNAV)

DETROIT METROPOLITAN WAYNE COUNTY (DTW)

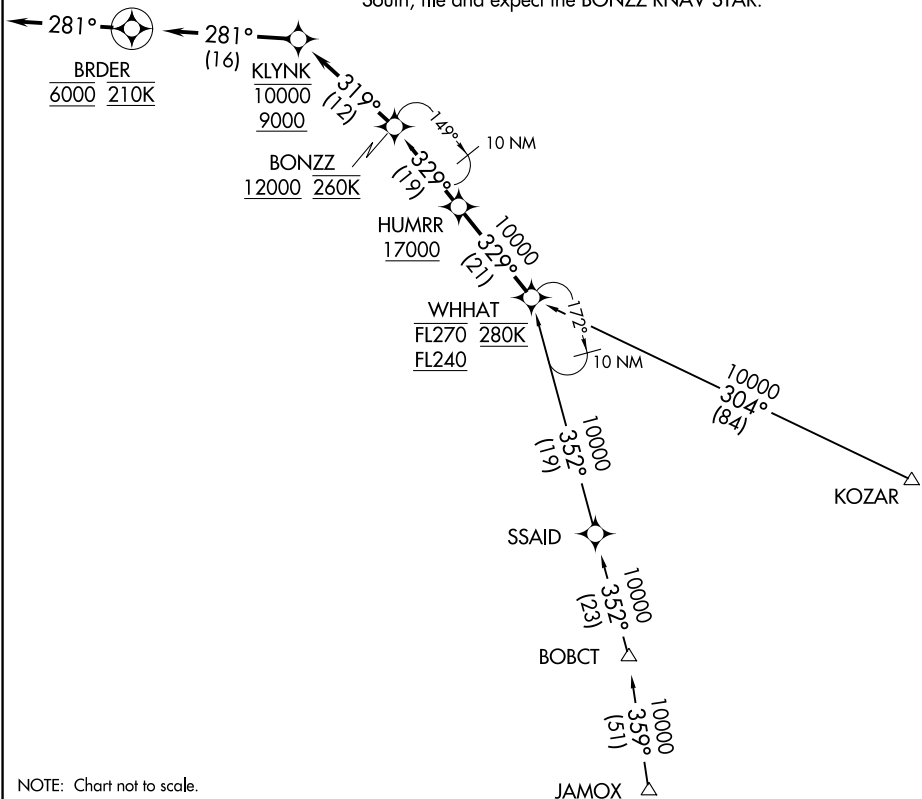
AL-119 (FAA)

DETROIT, MICHIGAN

D-ATIS
133.675
DETROIT APP CON
126.225 284.0

- NOTE: RADAR required.
- NOTE: RNAV 1.
- NOTE: DME/DME/IRU or GPS required.
- NOTE: Expect Rwy 3R.
- NOTE: Jet aircraft descend via Mach number until intercepting 280K. Maintain 280K until slowed by the STAR.
- NOTE: For use when DTW landing North or West. When DTW landing South, file and expect the BONZZ RNAV STAR.

Ldg KDTW



NOTE: Chart not to scale.

ARRIVAL ROUTE DESCRIPTION

JAMOX TRANSITION (JAMOX.KLYNK2)

KOZAR TRANSITION (KOZAR.KLYNK2)

From BONZZ on track 319° to cross KLYNK between 9000 and 10000, then on track 281° to cross BRDER at 6000 and at 210K, then on track 281°. Expect RADAR vectors to final approach course.

LOST COMMUNICATIONS

From BRDER, execute ILS Rwy 3R approach.

EC-1, 25 APR 2019 to 23 MAY 2019

EC-1, 25 APR 2019 to 23 MAY 2019

KLYNK TWO ARRIVAL (RNAV)

(BONZZ.KLYNK2) 28FEB19

DETROIT, MICHIGAN

DETROIT METROPOLITAN WAYNE COUNTY (DTW)