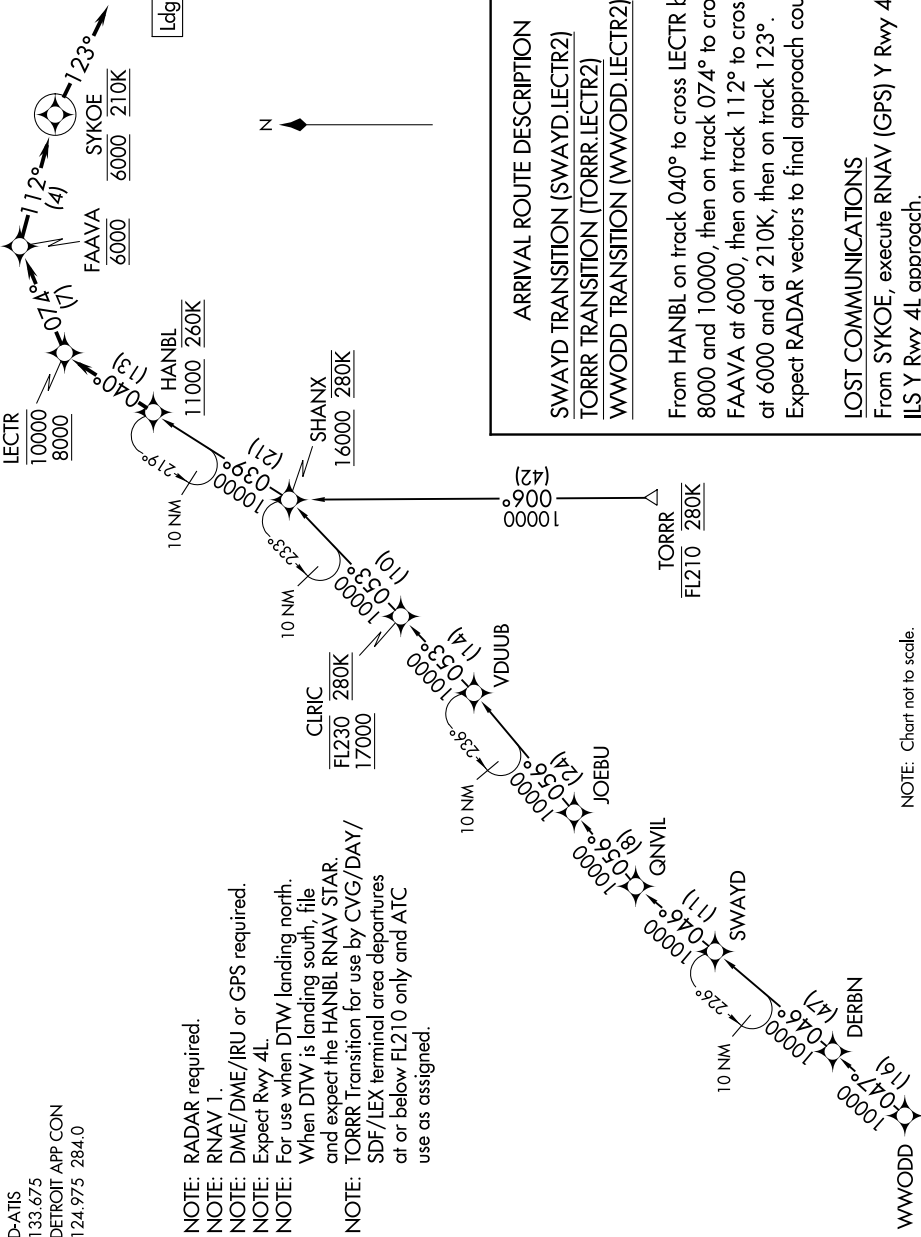


LECTR TWO ARRIVAL (RNAV)

EC-1, 25 APR 2019 to 23 MAY 2019

D-ATIS
133.675
DETROIT APP CON
124.975 284.0

- NOTE: RADAR required.
- NOTE: RNAV 1.
- NOTE: DME/DME/IRU or GPS required.
- NOTE: Expect Rwy 4L.
- NOTE: For use when DTW landing north. When DTW is landing south, file and expect the HANBL RNAV STAR.
- NOTE: TORRR Transition for use by CVG/DAY/SDF/LEX terminal area departures at or below FL210 only and ATC use as assigned.



ARRIVAL ROUTE DESCRIPTION

SWAYD TRANSITION (SWAYD.LECTR2)
TORRR TRANSITION (TORRR.LECTR2)
WWODD TRANSITION (WWODD.LECTR2)

From HANBL on track 040° to cross LECTR between 8000 and 10000, then on track 074° to cross FAAVA at 6000, then on track 112° to cross SYKOE at 6000 and at 210K, then on track 123°.

Expect RADAR vectors to final approach course.

LOST COMMUNICATIONS

From SYKOE, execute RNAV (GPS) Y Rwy 4L or ILS Y Rwy 4L approach.

NOTE: Chart not to scale.

EC-1, 25 APR 2019 to 23 MAY 2019