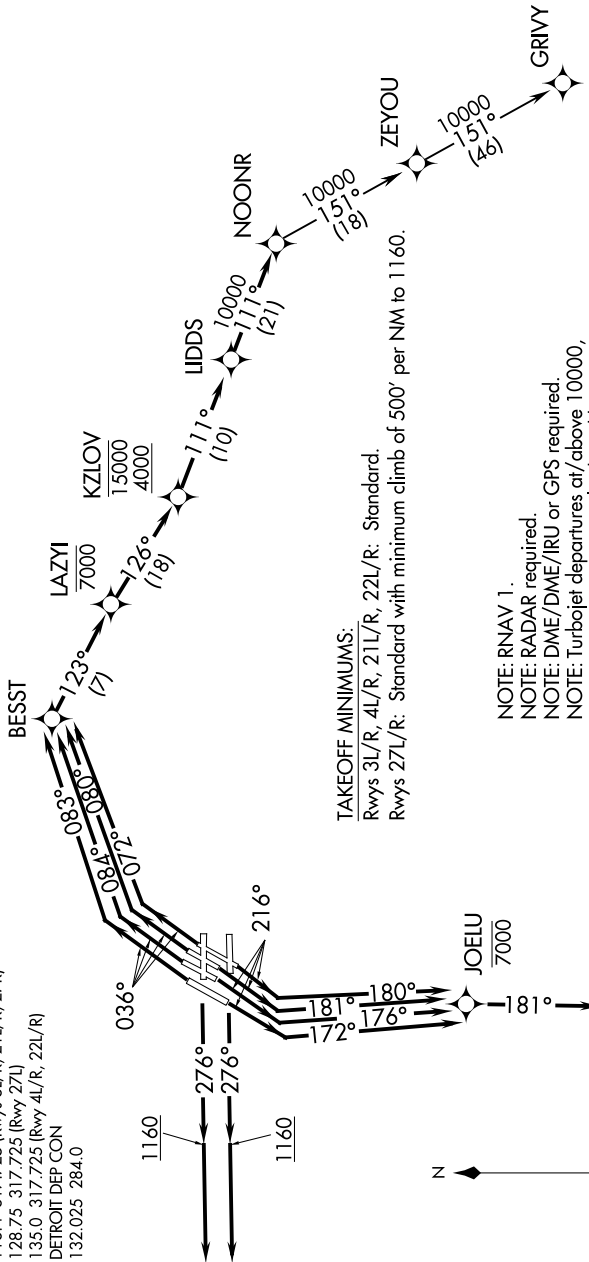


TOP ALTITUDE:  
ASSIGNED BY ATC

EC-1, 25 APR 2019 to 23 MAY 2019

D-ATIS 118.125  
CLNC DEL 120.65  
CPDLC  
GND CON  
121.8 (NW) 119.45 (NE)  
132.725 (SW) 119.25 (SE)  
METRO TOWER  
118.4 317.725 (Rwys 3L/R, 21L/R, 27R)  
128.75 317.725 (Rwy 27L)  
135.0 317.725 (Rwy 4L/R, 22L/R)  
DETROIT DEP CON  
132.025 284.0



NOTE: RNAV 1.  
NOTE: RADAR required.  
NOTE: DME/DME/IRU or GPS required.  
NOTE: Turbojet departures at/above 10000,  
maintain 280K until advised by ATC.

TAKEOFF MINIMUMS:  
Rwys 3L/R, 4L/R, 21L/R, 22L/R: Standard.  
Rwy 27L/R: Standard with minimum climb of 500' per NM to 1160.

(NARRATIVE ON FOLLOWING PAGE)

EC-1, 25 APR 2019 to 23 MAY 2019