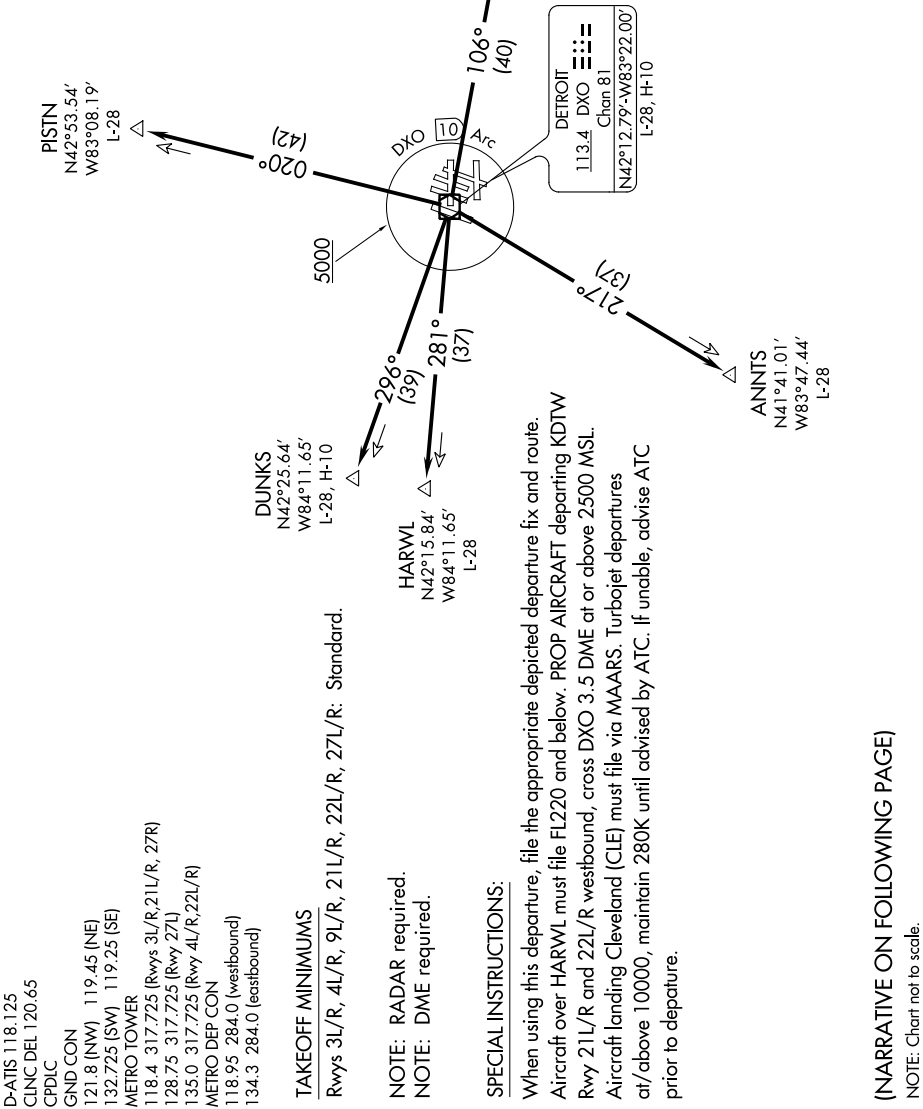


# METRO ONE DEPARTURE

AL-119 (FAA)

DETROIT, MICHIGAN

**TOP ALTITUDE:  
ASSIGNED BY ATC**



EC-1, 25 APR 2019 to 23 MAY 2019

EC-1, 25 APR 2019 to 23 MAY 2019

D-ATIS 118.125  
 CLNC DEL 120.65  
 CPDLC  
 GND CON  
 121.8 (NW) 119.45 (NE)  
 132.725 (SW) 119.25 (SE)  
 METRO TOWER  
 118.4 317.725 (Rwys 3L/R, 21L/R, 27R)  
 128.75 317.725 (Rwy 27L)  
 135.0 317.725 (Rwy 4L/R, 22L/R)  
 METRO DEP CON  
 118.95 284.0 (westbound)  
 134.3 284.0 (eastbound)

**TAKEOFF MINIMUMS**

Rwys 3L/R, 4L/R, 9L/R, 21L/R, 21L/R, 22L/R, 27L/R: Standard.

**NOTE: RADAR required.**  
**NOTE: DME required.**

**SPECIAL INSTRUCTIONS:**

When using this departure, file the appropriate depicted departure fix and route. Aircraft over HARWL must file FL220 and below. PROP AIRCRAFT departing KDTW Rwy 21L/R and 22L/R westbound, cross DXO 3.5 DME at or above 2500 MSL. Aircraft landing Cleveland (CLE) must file via MAARS. Turbojet departures at/above 10000, maintain 280K until advised by ATC. If unable, advise ATC prior to departure.

(NARRATIVE ON FOLLOWING PAGE)

NOTE: Chart not to scale.

# METRO ONE DEPARTURE