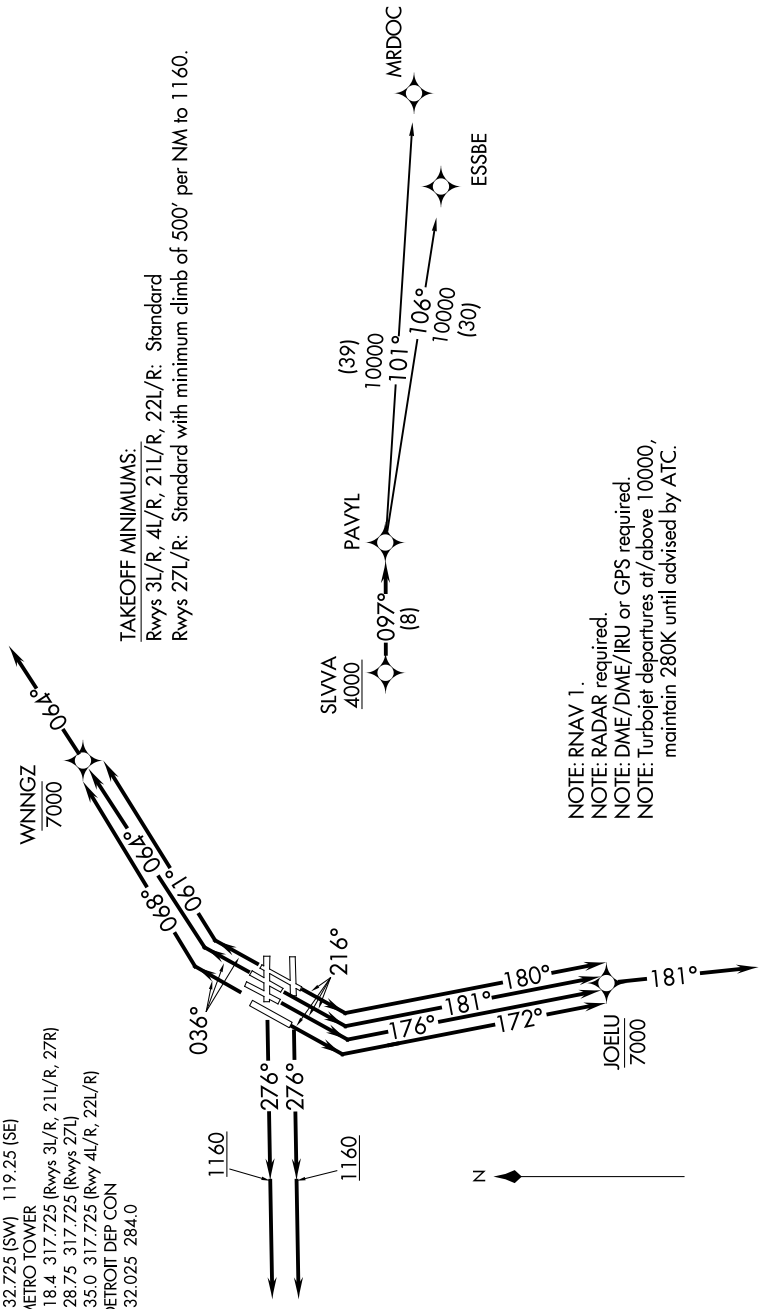


EC-1, 25 APR 2019 to 23 MAY 2019

TOP ALTITUDE:
ASSIGNED BY ATC

- D-ATIS 118.125
- CLNC DEL 120.65
- CPDLC
- GND CON
- 121.8 (NW) 119.45 (NE)
- 132.725 (SW) 119.25 (SE)
- METRO TOWER
- 118.4 317.725 (Rwys 3L/R, 21L/R, 27R)
- 128.75 317.725 (Rwys 27L)
- 135.0 317.725 (Rwy 4L/R, 22L/R)
- DETROIT DEP CON
- 132.025 284.0



TAKEOFF MINIMUMS:
 Rwys 3L/R, 4L/R, 21L/R, 22L/R: Standard
 Rwys 27L/R: Standard with minimum climb of 500' per NM to 1160.

NOTE: RNAV 1.
 NOTE: RADAR required.
 NOTE: DME/DME/IRU or GPS required.
 NOTE: Turbojet departures at/above 10000, maintain 280K until advised by ATC.

(NARRATIVE ON FOLLOWING PAGE)

EC-1, 25 APR 2019 to 23 MAY 2019

NOTE: Chart not to scale.