

WAAS CH 53300 W27B	APP CRS 276°	Rwy Idg TDZE Apt Elev	8500 630 645
--	------------------------	-----------------------------	---

RNAV (GPS) RWY 27L

DETROIT METROPOLITAN WAYNE COUNTY (DTW)

RNP APCH

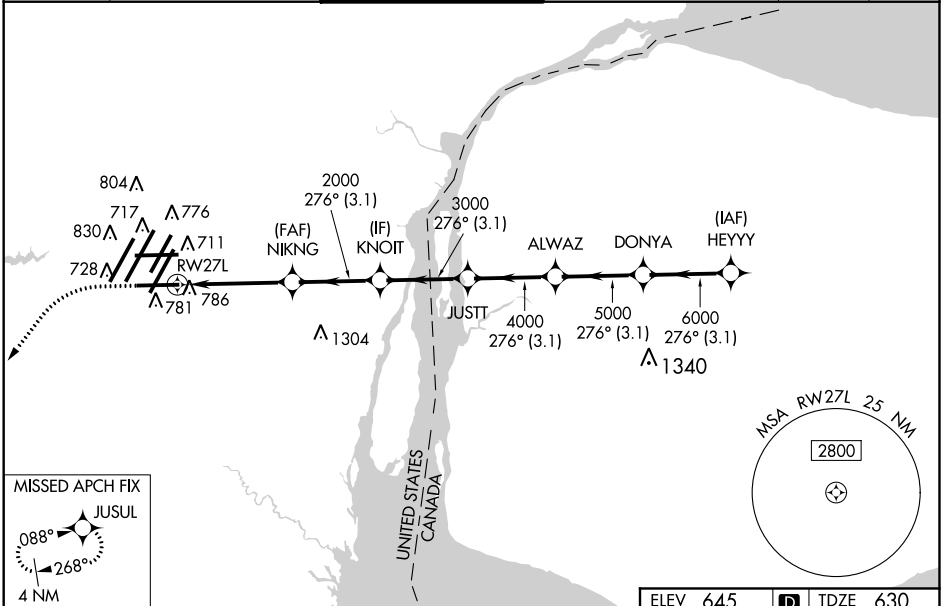
For uncompensated Baro-VNAV systems, LNAV/VNAV NA below -19°C (-2°F) or above 54°C (130°F). Simultaneous approach authorized. LNAV procedure NA during simultaneous operations. Use of FD or AP required during simultaneous operations. For inop ALS, increase LNAV/VNAV all Cats visibility to RVR 5000. ** RVR 1800 authorized with use of FD or AP or HUD to DA.

MALSRL



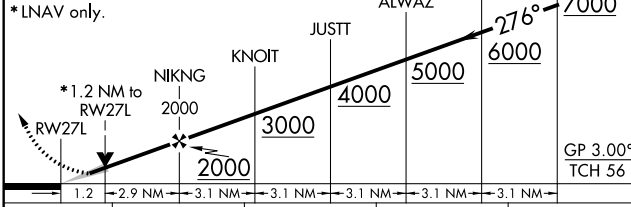
MISSED APPROACH:
Climb to 1100 then climbing left turn to 4000 direct JUSUL and hold.

D-ATIS 133.675	DETROIT APP CON 124.05 284.0	METRO TOWER 128.75 317.725	GND CON 121.8 (NW) 119.45 (NE) 132.725 (SW) 119.25 (SE)	CLNC DEL 120.65	CPDLC
--------------------------	--	--------------------------------------	---	---------------------------	-------

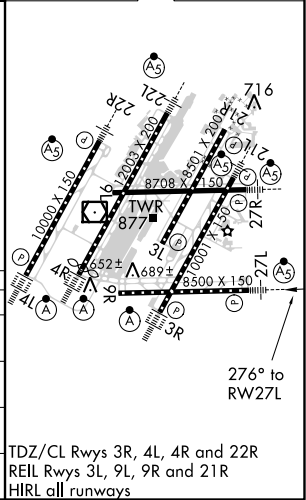


MISSED APCH FIX
JUSUL
088°
268°
4 NM

ELEV 645	D	TDZE 630
----------	----------	----------



CATEGORY	A	B	C	D
LPV DA**		830/24	200 (200-½)	
LNAV/VNAV DA		958/30	328 (400-⅝)	
LNAV MDA	1080/24	450 (500-½)	1080/45	450 (500-⅞)
C CIRCLING	1180-1	535 (600-1)	1180-1½ 535 (600-1½)	1240-2 595 (600-2)



EC-1, 25 APR 2019 to 23 MAY 2019

EC-1, 25 APR 2019 to 23 MAY 2019