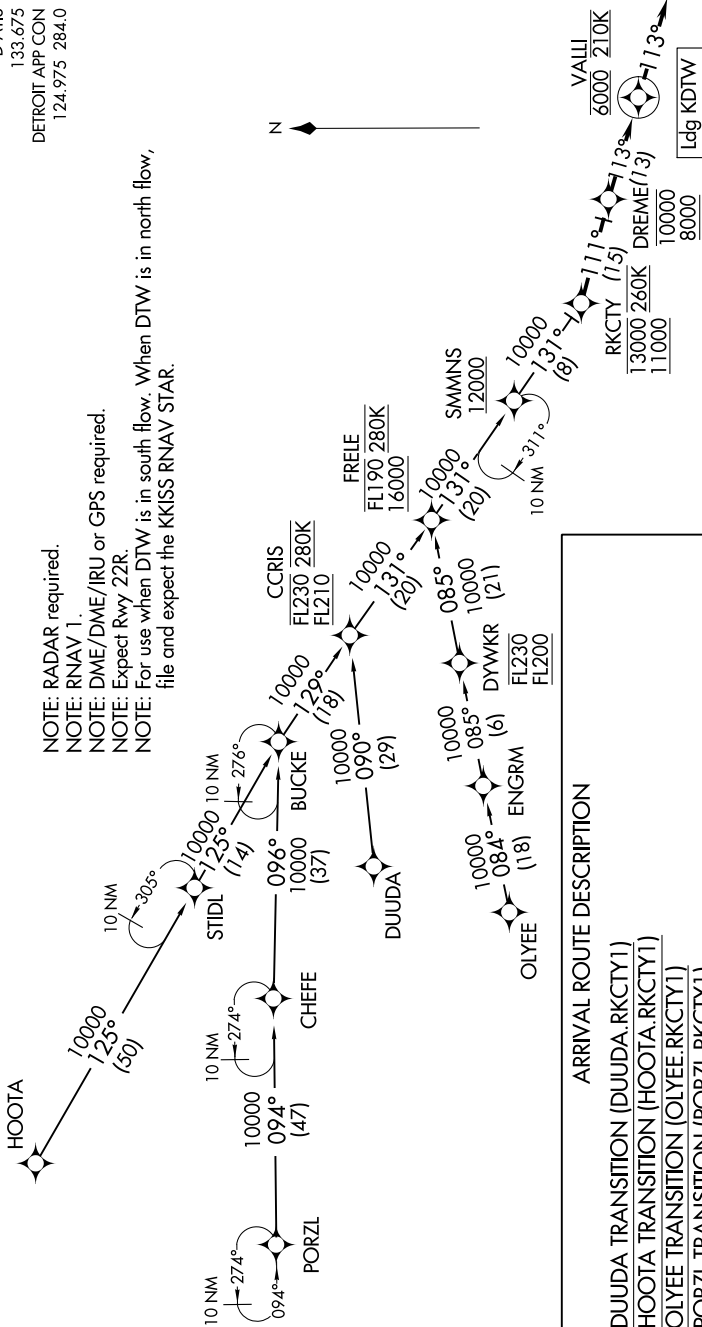


D-ATIS  
133.675  
DETROIT APP CON  
124.975 284.0

NOTE: RADAR required.  
NOTE: RNAV 1.  
NOTE: DME/DME/IRU or GPS required.  
NOTE: Expect Rwy 22R.  
NOTE: For use when DTW is in south flow. When DTW is in north flow, file and expect the KKISS RNAV STAR.



ARRIVAL ROUTE DESCRIPTION

- DUUDA TRANSITION (DUUDA.RKCTY1)
- HOOTA TRANSITION (HOOTA.RKCTY1)
- OLYEE TRANSITION (OLYEE.RKCTY1)
- PORZL TRANSITION (PORZL.RKCTY1)

From RKCTY on track 111° to cross DREME between 8000 and 10000, then on track 113° to cross VALLI at 6000 and at 210K, then on track 113°. Expect RADAR vectors to final approach course.

LOST COMMUNICATIONS  
From VALLI, execute ILS Z RWY 22R approach.

NOTE: Chart not to scale.